

TABLE N-27

**Dairy Products Production by Month
New York State — 1996-2002**

Item	1996	1997	1998	1999	2000	2001(r)	2002
- - - thousand pounds - - -							
Butter	27,173	24,501	21,217	24,641	21,819	26,221	28,292
January	2,880	2,500	2,348	2,383	3,109	2,388	3,276
February	2,571	2,403	2,461	2,362	3,146	2,645	2,850
March	2,660	2,260	2,058	2,400	2,133	2,458	2,668
April	2,408	2,358	1,860	2,310	2,243	2,464	3,089
May	2,364	2,418	1,584	2,021	1,773	2,507	2,780
June	1,861	1,852	1,332	1,722	1,371	2,359	1,817
July	2,006	1,710	1,474	2,915	1,367	1,939	2,000
August	1,748	2,067	1,532	1,228	1,216	1,153	1,711
September	1,803	1,636	1,349	1,716	1,223	2,087	2,107
October	2,239	1,621	1,700	1,942	1,309	2,032	1,556
November	2,143	1,863	1,527	1,593	1,303	1,708	1,776
December	2,490	1,813	1,992	2,049	1,626	2,481	2,662
Yogurt — Plain and Flavored	208,513	203,204	233,126	250,084	247,232	252,631	248,785
January	17,114	19,491	16,502	19,795	19,141	21,292	18,029
February	19,604	16,173	16,835	21,916	22,487	21,680	21,860
March	20,633	14,114	19,723	23,592	23,973	24,561	19,836
April	18,895	19,007	19,425	21,120	20,578	19,384	20,227
May	18,287	18,453	19,080	23,041	23,727	24,777	23,886
June	17,998	18,540	21,636	21,961	21,971	21,258	20,629
July	15,911	18,234	16,956	18,783	19,295	20,286	22,612
August	17,431	17,742	20,230	22,539	24,037	24,439	22,629
September	16,945	17,360	25,967	21,281	20,553	20,199	21,161
October	16,729	15,880	20,450	18,896	18,714	20,440	20,382
November	13,780	13,736	16,047	15,436	16,309	17,265	18,658
December	15,186	14,474	20,275	21,724	16,447	17,050	18,876
Total Dry Whey	110,039	112,667	117,110	123,585	126,754	124,399	125,215
January	8,627	9,447	9,316	10,133	11,319	10,002	11,056
February	9,098	9,060	8,910	9,629	10,319	10,151	10,455
March	9,915	10,037	9,793	10,110	11,946	10,614	11,117
April	10,861	10,182	10,178	10,835	11,047	10,586	10,736
May	10,097	9,874	11,016	11,042	11,435	11,459	11,523
June	9,800	10,331	10,705	10,907	10,818	10,720	10,282
July	8,763	9,248	9,876	10,254	10,796	11,186	10,514
August	8,600	8,590	9,346	10,274	10,200	10,208	10,357
September	8,476	8,664	9,364	10,251	9,561	9,727	9,729
October	8,520	9,172	9,470	9,884	10,282	9,390	9,881
November	7,767	8,513	8,919	9,347	9,368	9,993	9,318
December	9,515	9,549	10,217	10,919	9,663	10,363	10,247
- - - thousand gallons - - -							
Standard Ice Cream	32,203	33,353	34,005	35,472	38,079	36,441	36,441
January	2,575	2,340	2,643	2,244	2,500	2,636	2,636
February	2,513	2,506	2,824	2,779	2,885	2,853	2,853
March	3,022	2,951	2,899	3,181	3,889	3,012	3,012
April	3,420	3,768	3,250	3,088	3,157	3,776	3,776
May	3,238	2,886	3,261	3,243	3,825	3,526	3,526
June	3,149	3,570	4,056	3,731	4,068	3,553	3,553
July	3,122	4,002	3,448	4,013	3,660	3,571	3,571
August	2,479	2,993	2,796	2,957	3,426	3,346	3,346
September	2,262	2,271	2,622	2,716	2,608	2,788	2,788
October	2,414	2,274	2,523	2,676	3,189	3,089	3,089
November	2,092	1,910	1,754	2,406	2,339	1,941	1,941
December	1,917	1,882	1,929	2,438	2,533	2,350	2,350
Lowfat Ice Cream	6,714	9,333	7,812	8,564	7,995	7,975	5,819
January	349	559	551	366	454	653	460
February	363	632	509	482	610	632	456
March	456	769	522	803	760	572	590
April	539	1,030	625	750	736	770	542
May	792	1,071	698	830	807	763	530
June	619	958	701	970	963	802	594
July	767	1,022	874	862	627	836	613
August	792	830	764	960	779	800	529
September	559	636	709	773	581	486	415
October	458	697	637	661	693	603	384
November	575	584	578	570	439	564	346
December	445	545	644	537	546	494	360

r Revised.

SOURCE: New York State Department of Agriculture and Markets, Agricultural Statistics Service, *Annual Bulletin 2002-2003*; <http://www.nass.usda.gov/ny/Bulletin/2003/03-dairy.pdf> (last viewed February 25, 2004).

TABLE N-28
Frozen Desserts and Mixes Production by Type
New York State — 1996-2002
(thousand gallons)

Item	1996	1997	1998	1999	2000	2001	2002
Standard Ice Cream	32,203	33,353	34,005	35,472	38,079	38,226	36,441
Lowfat Ice Cream ¹	6,714	9,333	7,812	8,564	7,995	8,717	5,819
Milk Sherbet ¹	2,442	2,451	2,585	2,793	2,788	2,825	2,805
Water Ices ²	3,383	2,513	2,918	4,831	4,848	4,451	4,236
Mixes							
Standard Ice Cream	20,040	19,719	20,200	21,835	21,089	21,508	20,206
Lowfat Ice Cream ³	2,253	2,282	2,216	2,939	2,976	3,099	3,044
Sherbet	1,688	1,669	1,780	1,868	1,883	1,942	1,834

- 1 Includes hard, soft-serve and freezer-made milkshakes.
2 Does not include counter-freezer production.
3 Includes milkshake mix.

SOURCE: New York State Department of Agriculture and Markets, Agricultural Statistics Service, *Annual Bulletin 2002-2003*; <http://www.nass.usda.gov/ny/Bulletin/2003/03-p041.pdf> (last viewed February 25, 2004).

TABLE N-29
Number of Dairy Plants Manufacturing Specified Products
New York State — 1996-2002

Item	1996	1997	1998	1999	2000	2001	2002
Total Cheese							
American	13	13	12	10	12	12	15
Italian	14	13	13	12	12	13	12
Excluding Cottage	33	32	31	30	35	39	45
Cottage	12	11	11	11	11	11	11
Butter	8	8	9	8	8	7	8
Condensed Skim Milk (unsweetened)	6	5	6	8	7	6	NA
Nonfat Dry Milk	3	2	2	2	2	2	NA
Standard Ice Cream (hard)	52	58	55	48	45	48	43
Water Ices	29	29	30	30	28	29	25
Plants Making One or More Dairy or Hard Frozen Dessert Products	134	134	130	121	113	120	122

NA Not available.

SOURCE: New York State Department of Agriculture and Markets, Agricultural Statistics Service, *Annual Bulletin 2002-2003*; <http://www.nass.usda.gov/ny/Bulletin/2003/03-p041.pdf> (last viewed February 25, 2004).

TABLE N-30

**Sheep and Lambs by Number of Farms, Inventory, Value and Value Per Head
New York State — 1997-2003(a)**
(thousands)

	1997	1998	1999	2000	2001	2002	2003
All Breeding Sheep and Lambs	48	49	46	50	50	52	53
Breeding Ewes 1 Year and Older	38	38	36	38	38	40	40
Breeding Rams 1 Year and Older	3	3	3	3	3	3	3
Replacement Lambs	7	8	7	9	9	9	10
Sheep and Lambs on Feed ¹	12	12	9	8	10	8	12
All Sheep and Lambs							
Number	60	61	55	58	60	60	60
Value per Head (dollars)	\$ 96.00	\$ 120.00	\$ 110.00	\$ 120.00	\$ 120.00	\$ 135.00	\$ 135.00
Total Value (thousand dollars)	\$ 5,760	\$ 7,320	\$ 6,050	\$ 6,960	\$ 7,200	\$ 8,100	\$ 8,775

a As of January 1.

1 Sheep and lambs on feed for slaughter market.

SOURCE: New York State Department of Agriculture and Markets, Agricultural Statistics Service, *Annual Bulletin 2002-2003*; <http://www.nass.usda.gov/ny/Bulletin/2003/03-p048.pdf> (last viewed February 25, 2004).

TABLE N-31

**Sheep and Lambs by Number of Operations, Production, Disposition and Income
New York State — 1996-2002**
(thousands)

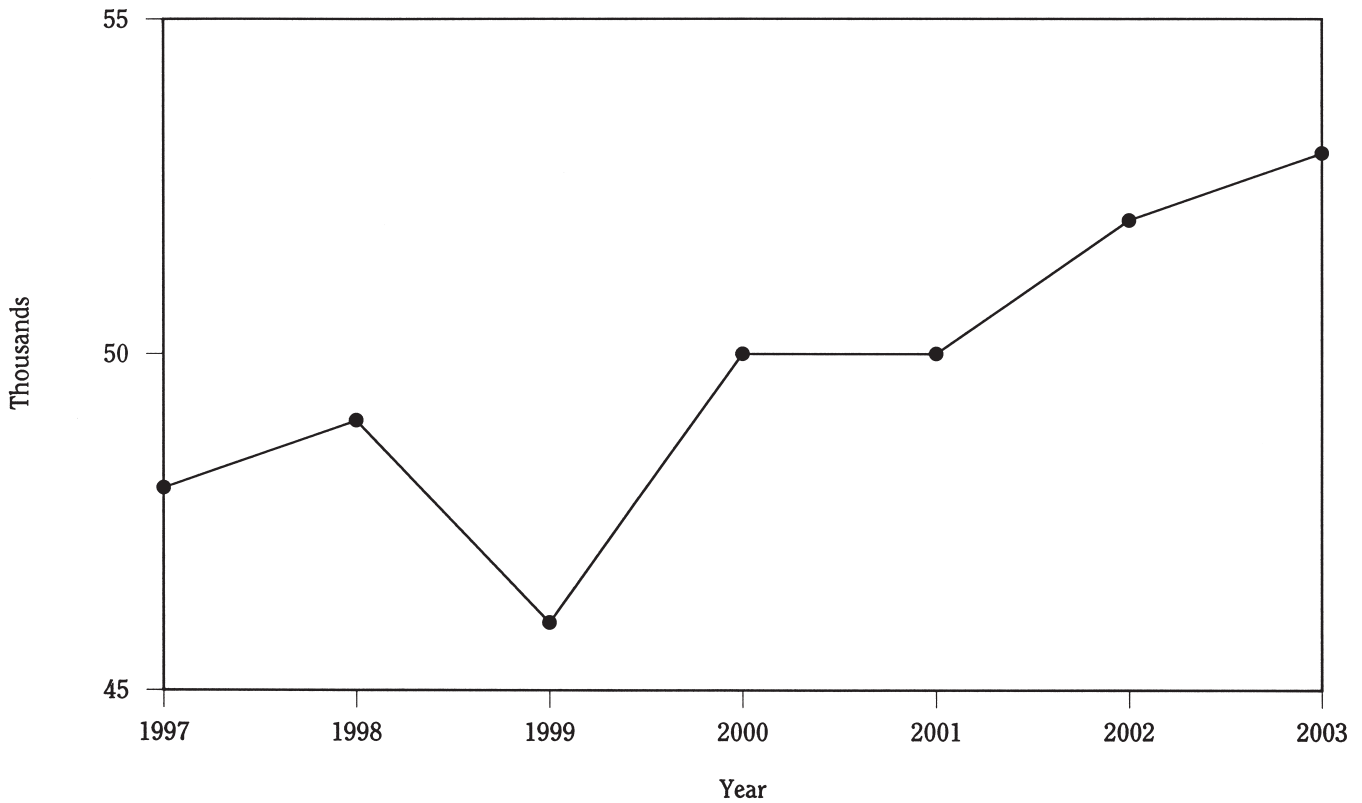
	1996	1997	1998	1999	2000	2001	2002
Operations with Sheep	1.8	1.7	1.6	1.4	1.5	1.5	1.5
Inventory as of January 1	65	60	61	55	58	60	60
Lamb Crop	54	50	47	48	46	49	51
Inshipments	2	1	1	1	2	2	3
Marketing							
Sheep	6	2	6	2	5	3	6
Lambs	39	36	37	34	30	36	32
Farm Slaughter	1	1	1	1	1	1	1
Deaths							
Sheep	9	5	4	3	5	5	4
Lambs	6	6	6	6	5	6	6
Inventory Following January 1	60	61	55	58	60	60	65
Gross Income ¹	\$ 3,414	\$ 3,395	\$ 3,414	\$ 2,958	\$ 3,035	\$ 3,749	\$ 2,134

1 Value of marketings and home consumption.

SOURCE: New York State Department of Agriculture and Markets, Agricultural Statistics Service, *Annual Bulletin 2002-2003*; <http://www.nass.usda.gov/ny/Bulletin/2003/03-p048.pdf> (last viewed February 25, 2004).

FIGURE N-3

**All Breeding Sheep and Lambs
New York State — 1997-2003**



SOURCE: New York State Department of Agriculture and Markets, Agricultural Statistics Service, *Annual Bulletin 2002-2003*; <http://www.nass.usda.gov/ny/Bulletin/2003/03-p048.pdf> (last viewed February 25, 2004).

TABLE N-32

**Sheep and Lambs by Wool Production and Value
New York State — 1996-2002**

	Unit	1996	1997	1998	1999	2000	2001	2002
Sheep Shorn	head	53,000	51,000	45,000	49,000	46,000	47,000	47,000
Weight per Fleece	pounds	7.1	6.7	6.8	6.8	6.6	6.8	7
Wool Production	pounds	377,000	343,000	307,000	333,000	304,000	320,000	325,000
Price per Pound	dollars	\$ 0.55	\$ 0.54	\$ 0.45	\$ 0.28	\$ 0.13	\$ 0.17	\$ 0.20
Value	dollars	\$ 207,000	\$ 185,000	\$ 138,000	\$ 93,000	\$ 40,000	\$ 54,000	\$ 65,000

SOURCE: New York State Department of Agriculture and Markets, Agricultural Statistics Service, *Annual Bulletin 2002-2003*; <http://www.nass.usda.gov/ny/Bulletin/2003/03-p048.pdf> (last viewed February 25, 2004).

TABLE N-33

**Commercial Slaughter of Sheep and Lambs by Number of Head, Liveweight and Months
New York State — 1996-2002**

	Unit	1996	1997	1998	1999	2000	2001	2002
Number of Head	thousands	34.0	29.5	30.0	27.3	25.5	22.9	37.7
Average Liveweight	pounds	98	97	107	104	101	92	87
Total Liveweight	thousand pounds	3,311	2,856	3,221	2,831	2,563	2,093	3,298
Sheep and Lambs	thousands	34.0	29.5	30.0	27.3	25.5	22.9	37.7
January	thousands	2.2	1.5	1.4	1.4	1.3	1.3	1.9
February	thousands	2.6	1.1	1.3	1.2	1.1	0.9	2.3
March	thousands	5.7	6.5	2.3	5.0	1.7	1.4	5.7
April	thousands	7.4	4.3	8.6	3.6	7.7	7.3	4.2
May	thousands	2.5	1.8	1.9	1.9	1.5	1.5	3.2
June	thousands	1.6	1.5	2.3	2.0	1.6	1.4	2.7
July	thousands	1.7	1.6	1.8	1.7	1.3	1.2	2.9
August	thousands	1.9	2.1	1.9	2.2	1.6	1.5	2.9
September	thousands	1.8	2.0	1.9	1.9	1.5	1.3	2.8
October	thousands	2.1	2.1	1.7	1.7	1.7	1.7	2.6
November	thousands	1.7	1.8	1.7	1.9	1.7	1.6	3.0
December	thousands	2.6	3.0	3.1	2.7	2.7	1.8	3.4

NOTE: Detail may not add to totals due to rounding.

SOURCE: New York State Department of Agriculture and Markets, Agricultural Statistics Service, *Annual Bulletin 2002-2003*; <http://www.nass.usda.gov/ny/Bulletin/2003/03-p048.pdf> (last viewed February 25, 2004).

TABLE N-34

**Chickens by Number of Farms, Inventory Value and Value per Head
New York State — 1996-2002(a)**
(thousands)

	1996	1997	1998	1999	2000	2001	2002
Hens and Pullets of Laying Age	3,510	3,470	3,610	3,740	4,230	3,846	3,696
Hens Over 12 Months	1,360	1,070	1,530	1,510	1,480	1,326	1,526
Pullets of Laying Age	2,150	2,400	2,080	2,230	2,750	2,520	2,170
Pullets Over 13 Weeks Not Laying	360	540	570	690	465	319	450
Pullets Under 13 Weeks	510	470	500	545	890	550	730
Other Chickens	20	20	20	25	15	15	16
All Chickens ¹							
Number	4,400	4,500	4,700	5,000	5,600	4,730	4,892
Value per Head	\$ 1.90	\$ 1.80	\$ 1.70	\$ 1.40	\$ 1.40	\$ 1.50	\$ 1.60
Total Value	\$ 8,360	\$ 8,100	\$ 7,990	\$ 7,000	\$ 7,840	\$ 7,095	\$ 7,827

a As of December 1.

1 Excluding meat chickens.

SOURCE: New York State Department of Agriculture and Markets, Agricultural Statistics Service, *Annual Bulletin 2002-2003*; <http://www.nass.usda.gov/ny/Bulletin/2003/03-p054.pdf> (last viewed February 25, 2004).

TABLE N-35

**Chickens Sold and Value of Sale
New York State — 1996-2002(a)**
(thousands)

	Unit	1996	1997	1998	1999	2000	2001	2002
Number Sold	thousands	3,000	2,800	3,030	2,779	2,464	2,613	2,390
Pounds Sold (live)	thousands	14,400	12,320	13,332	10,282	10,595	10,975	10,038
Price per pound (live)	cents	0.2	2.6	2.1	0.5	1.0	0.1	0.1
Value of Sales	thousand dollars	\$ 29	\$ 320	\$ 280	\$ 51	\$ 106	\$ 11	\$ 10

a Excludes broilers.

SOURCE: New York State Department of Agriculture and Markets, Agricultural Statistics Service, *Annual Bulletin 2002-2003*; <http://www.nass.usda.gov/ny/Bulletin/2003/03-p054.pdf> (last viewed February 25, 2004).

TABLE N-36

**Chickens by Number of Layers and Egg Production
New York State by Month — 1996-2002**

	1996	1997	1998	1999	2000	2001	2002
Layers (thousands)							
January	3,974	3,399	3,369	3,616	3,899	4,216	3,884
February	3,847	3,463	3,436	3,722	3,874	4,205	3,960
March	3,928	3,412	3,529	3,724	4,001	4,149	3,876
April	4,002	3,280	3,483	3,655	3,989	4,085	3,872
May	3,947	3,354	3,433	3,589	3,906	4,128	3,856
June	3,807	3,433	3,485	3,531	3,913	4,197	3,807
July	3,635	3,402	3,495	3,514	3,919	4,129	3,816
August	3,610	3,331	3,452	3,599	3,978	3,985	3,916
September	3,495	3,217	3,448	3,659	4,086	4,078	4,020
October	3,467	3,343	3,530	3,687	4,119	4,174	4,024
November	3,547	3,500	3,602	3,732	4,158	3,966	3,831
December	3,455	3,419	3,577	3,851	4,212	3,781	3,648
Eggs Per Layer (number)							
January	23.65	23.24	24.04	24.06	23.60	23.72	24.20
February	21.84	21.08	21.83	21.49	22.20	21.40	21.97
March	23.17	22.86	23.80	23.90	23.74	23.62	25.03
April	22.99	22.26	23.26	22.98	23.06	22.03	22.99
May	23.82	23.26	24.47	23.40	23.55	23.26	23.60
June	22.33	22.43	23.82	22.94	23.00	23.11	23.38
July	22.83	23.52	24.61	23.62	24.24	23.98	23.85
August	22.99	23.42	24.04	23.62	24.13	24.09	23.49
September	22.60	22.69	22.91	22.68	22.76	22.81	22.39
October	23.65	23.93	23.80	23.87	23.55	22.76	23.61
November	22.55	23.14	23.32	23.04	22.85	22.69	23.75
December	23.44	23.98	24.32	23.37	23.50	24.86	24.67
Total Egg Production (million eggs)							
January	94	79	81	87	92	100	94
February	84	73	75	80	86	90	87
March	91	78	84	89	95	98	97
April	92	73	81	84	92	90	89
May	94	78	84	84	92	96	91
June	85	77	83	81	90	97	89
July	83	80	86	83	95	99	91
August	83	78	83	85	96	96	92
September	79	73	79	83	93	93	90
October	82	80	84	88	97	95	95
November	80	81	84	86	95	90	91
December	81	82	87	90	99	94	90
Forced Molt Layers Being Molted							
First of Month (Percent of all Layers)							
January	—	1.0%	—	1.0%	1.0%	2.5%	—
February	3.0%	1.0	—	—	1.5	0.5	—
March	—	1.5	1.0%	1.0	1.5	—	3.5%
April	—	1.0	—	—	0.5	—	—
May	1.5	1.0	1.5	1.0	1.0	—	0.5
June	3.0	1.0	3.0	—	2.0	—	—
July	1.5	2.0	2.5	—	0.5	0.5	0.5
August	3.0	0.5	1.0	3.5	1.0	0.5	—
September	2.0	1.5	—	2.5	1.0	0.5	3.0
October	1.0	2.0	1.0	—	1.5	0.5	3.5
November	1.0	1.0	—	—	2.5	5.5	0.5
December	1.0	—	1.0	0.5	2.5	—	—
Forced Molt Layers with Molt Completed							
First of Month (percent of all layers)							
January	6.0%	6.0%	2.5%	5.5%	4.0%	4.5%	4.5%
February	4.0	4.5	2.5	5.5	5.0	5.0	8.5
March	8.5	5.0	3.0	5.5	4.5	5.5	5.0
April	3.5	3.0	2.0	4.5	5.5	2.5	6.0
May	1.5	2.0	3.5	4.5	6.5	2.5	7.0
June	4.5	1.5	3.5	4.0	5.5	2.0	7.5
July	7.0	0.5	4.5	4.0	6.5	0.5	6.0
August	6.5	2.0	5.5	3.0	7.0	0.5	4.0
September	5.0	2.5	5.5	3.5	6.0	0.5	6.5
October	5.5	7.5	5.0	6.0	4.0	0.5	9.0
November	5.5	3.5	6.0	3.5	5.5	0.5	11.0
December	6.5	3.5	6.0	4.0	7.0	7.5	10.5

— Represents zero.

SOURCE: New York State Department of Agriculture and Markets, Agricultural Statistics Service, *Annual Bulletin 2002-2003*; <http://www.nass.usda.gov/ny/Bulletin/2003/03-livestock.pdf> (last viewed February 25, 2004).

TABLE N-37
Broilers and Eggs by Production and Value
New York State — 1996-2002(a)
(thousands)

	Unit	1996	1997	1998	1999	2000	2001	2002
Broilers								
Number Produced	thousands	1,500	1,400	1,900	2,000	2,100	2,300	2,400
Pounds Produced	thousands	8,000	7,000	9,900	11,000	11,800	12,200	13,200
Price per Pound (live)	cents	41.0	39.0	41.0	39.0	36.0	41.0	33.0
Value of Production	thousand dollars	\$ 3,280	\$ 2,730	\$ 4,059	\$ 4,290	\$ 4,248	\$ 5,002	\$ 4,356
Eggs								
Annual Average Number of Layers	thousands	3,773	3,382	3,473	3,633	3,974	4,127	3,887
Eggs Per Layer	number	276	275	284	280	280	277	283
Eggs Produced	millions	1,042	931	986	1,017	1,113	1,143	1,100
Prices per Dozen	cents	77.1	66.3	62.4	55.6	56.4	56.7	48.9
Value of Production	thousand dollars	\$ 66,949	\$ 51,671	\$ 51,272	\$ 47,121	\$ 52,311	\$ 54,007	\$ 44,825

a Marketing for broiler and egg data is preceding December through November.

SOURCE: New York State Department of Agriculture and Markets, Agricultural Statistics Service, *Annual Bulletin 2002-2003*; <http://www.nass.usda.gov/ny/Bulletin/2003/03-p054.pdf> (last viewed February 25, 2004).

TABLE N-38
Hogs and Pigs by Number of Farms, Inventory Value and Value per Head
New York State — 1996-2002(a)
(thousands)

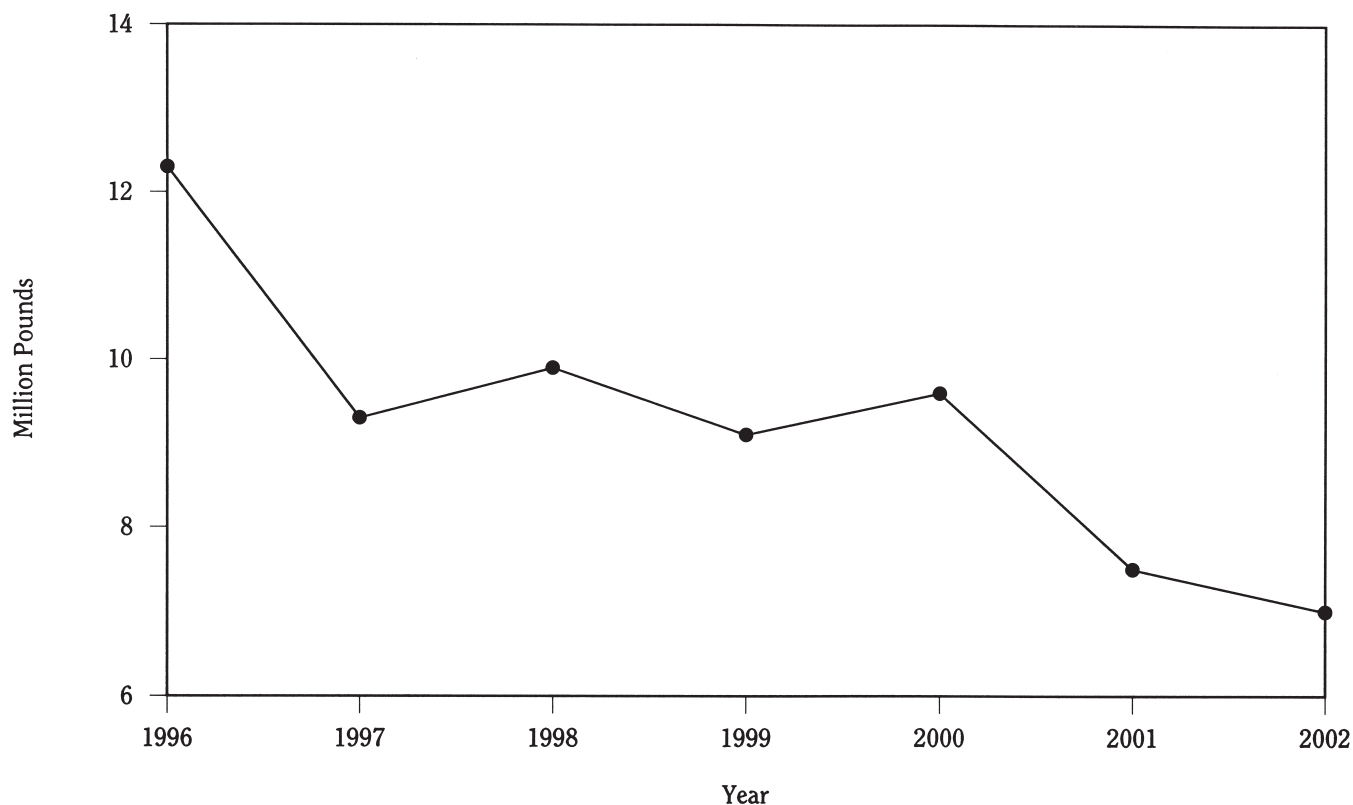
Months	1996	1997	1998	1999	2000	2001(r)	2002
Hogs and Pigs for Breeding	13	11	8	6	10	9	9
Hogs and Pigs for Market	69	68	52	34	70	66	77
Under 60 lbs.	28	30	18	9	28	20	30
60-119 lbs.	15	15	14	9	15	15	17
120-179 lbs.	13	13	10	8	15	16	15
180+ lbs.	13	10	10	8	12	15	15
All Hogs and Pigs							
Number	82	79	60	40	80	75	86
Value per Head (dollars)	\$ 92.00	\$ 81.00	\$ 44.00	\$ 71.00	\$ 76.00	\$ 76.00	\$ 70.00
Total Value (thousand dollars)	\$ 7,544	\$ 6,399	\$ 2,640	\$ 2,840	\$ 6,080	\$ 5,700	\$ 6,020

r Revised.

a As of December 1.

SOURCE: New York State Department of Agriculture and Markets, Agricultural Statistics Service, *Annual Bulletin 2002-2003*; <http://www.nass.usda.gov/ny/Bulletin/2003/03-p046.pdf> (last viewed February 25, 2004).

FIGURE N-4
Hogs and Pigs Slaughtered, Total Liveweight
New York State — 1996-2002



SOURCE: New York State Department of Agriculture and Markets, Agricultural Statistics Service, *Annual Bulletin 2002-2003*; <http://www.nass.usda.gov/ny/Bulletin/2003/03-p046.pdf> (last viewed February 25, 2004).

TABLE N-39
Hogs and Pigs by Number of Operations, Production, Disposition and Income
New York State — 1996-2002
(thousands)

	1996	1997	1998	1999	2000	2001	2002
Operations with Hogs	1.6	1.5	1.4	1.0	1.0	1.4r	1.3
Inventory Preceding December 1	66	82	79	60	40	80	75
Pig Crop	134	136	99	65	129	138	125
Inshipments	9	7	12	15	6	4	6
Marketings	115	135	118	90	84	136	109
Farm Slaughter	2	2	2	1	1	1	1
Deaths	10	9	10	9	10	10	10
Inventory as of December 1	82	79	60	40	80	75	86
Gross Income ¹	\$ 10,788	\$ 14,494	\$ 9,212	\$ 5,760	\$ 6,612	\$ 11,161	\$ 6,641

r Revised.

1 Value of marketings and home consumption.

SOURCE: New York State Department of Agriculture and Markets, Agricultural Statistics Service, *Annual Bulletin 2002-2003*; <http://www.nass.usda.gov/ny/Bulletin/2003/03-p046.pdf> (last viewed February 25, 2004).

TABLE N-40
Commercial Slaughter of Hogs and Pigs
New York State — 1996-2002
(thousands)

	Unit	1996	1997	1998	1999	2000	2001	2002
Number of Head	thousands	54.2	49.3	52.7	52.1	41.3	35.9	36.1
Average Liveweight	pounds	228	189	188	175	233	210	195
Total Liveweight	thousand pounds	12,333	9,325	9,914	9,100	9,624	7,521	7,034

SOURCE: New York State Department of Agriculture and Markets, Agricultural Statistics Service, *Annual Bulletin 2002-2003*; <http://www.nass.usda.gov/ny/Bulletin/2003/03-p046.pdf> (last viewed February 25, 2004).

TABLE N-41
Commercial Slaughter of Hogs and Pigs by Month
New York State — 1996-2002
(thousands)

	1996	1997	1998	1999	2000	2001	2002
--- Number of Head ---							
Hogs and Pigs	54.2	49.3	52.7	52.1	41.3	35.9	36.1
January	4.7	3.8	3.8	4.0	3.2	2.9	2.5
February	4.2	3.4	3.2	3.7	3.2	2.3	2.3
March	3.9	3.0	3.3	3.7	3.0	2.4	2.2
April	3.8	3.4	3.5	3.9	2.5	2.5	2.5
May	3.8	3.3	3.4	3.6	3.1	3.8	2.7
June	4.0	3.9	4.2	4.8	3.8	3.2	2.9
July	4.8	4.7	5.1	4.5	3.6	3.4	3.9
August	5.3	5.0	5.2	5.4	4.4	4.1	4.2
September	4.7	5.0	5.4	5.2	3.9	3.3	3.5
October	5.0	4.8	4.9	4.4	3.6	3.4	3.5
November	3.9	3.6	4.0	3.6	3.2	2.6	2.7
December	6.0	5.5	6.7	5.0	3.8	3.0	3.4

NOTE: Detail may not add to totals due to rounding.

SOURCE: New York State Department of Agriculture and Markets, Agricultural Statistics Service, *Annual Bulletin 2002-2003*; <http://www.nass.usda.gov/ny/Bulletin/2003/03-p046.pdf> (last viewed February 25, 2004).

TABLE N-42
Ducks and Turkeys by Production and Value
New York State — 1996-2002

	Unit	1996	1997	1998	1999	2000	2001	2002
Ducks								
Number	thousands	2,300	2,250	2,350	2,200	2,400	2,250	1,800
Pounds Produced (live)	thousands	17,400	17,200	18,200	17,600	19,600	18,500	15,500
Price per Pound (live)	cents	61.0	68.0	69.0	69.0	70.0	70.0	70.0
Value of Production	thousand dollars	\$ 10,614	\$ 11,696	\$ 12,558	\$ 12,144	\$ 13,720	\$ 12,950	\$ 10,850
Turkeys								
Number	thousands	520	510	500	490	510	510	520
Pounds Produced (live)	thousands	12,792	12,087	11,950	11,907	12,393	11,067	12,220
Price per Pound (live)	cents	42.0	42.0	40.0	44.0	43.0	41.0	37.0
Value of Production	thousand dollars	\$ 5,373	\$ 5,077	\$ 4,780	\$ 5,239	\$ 5,329	\$ 4,537	\$ 4,521

SOURCE: New York State Department of Agriculture and Markets, Agricultural Statistics Service, *Annual Bulletin 2002-2003*; <http://www.nass.usda.gov/ny/Bulletin/2003/03-p053.pdf> (last viewed February 25, 2004).

TABLE N-43

**Apples by Bearing Acres, Production and Value
New York State — 1996-2002**

	Unit	1996	1997	1998	1999	2000(r)	2001(r)	2002
Acres of Bearing Age	thousands	57.5	55.0	55.0	55.0	40.0	41.0	41.0
Production	million pounds	1,030	1,120	1,070	1,260	995	1,000	680
Utilized Production	million pounds	1,030	1,120	960	1,230	935	940	630
Value								
Marketing Year Average Price ¹	cents per pound	\$ 13.50	\$ 12.60	\$ 11.40	\$ 11.40	\$ 11.70	\$ 11.90	\$ 16.20
Value of Utilized Production	thousand dollars	\$ 138,850	\$ 141,320	\$ 109,560	\$ 140,230	\$ 109,075	\$ 111,860	\$ 101,980

r Revised.

1 Packinghouse door equivalent.

SOURCE: New York State Department of Agriculture and Markets, Agricultural Statistics Service, *Annual Bulletin 2002-2003*; <http://www.nass.usda.gov/ny/Bulletin/2003/03-p027.pdf> (last viewed February 25, 2004).

TABLE N-44

**Apple Production by Receipts and Utilization at
New York Processing Plants and Cider Mills
New York State — 1996-2002**

	1996	1997	1998	1999	2000	2001	2002
	--- million pounds ---						
Total Received ¹	464.3	505.6	471.8	574.7	444.0	471.6	314.4
Receipts from Other States ²	49.5	54.0	34.0	50.0	37.3	32.8	38.2
Used for Canning and Applesauce	235.9	257.0	241.8	261.9	216.2	267.4	208.7
Used for Juice and Cider	184.2	152.9	144.8	244.4	184.1	158.9	78.2
Used for Freezing	34.3	84.4	78.1	50.2	30.7	31.1	20.2
Other Products ³	9.9	11.3	7.1	18.2	13.0	13.7	7.2
	--- thousand gallons ---						
Cider and Juice Made ⁴	17,595	20,150	17,379	D	14,779	a	a

NOTE: Detail may not add to totals due to rounding.

D Not published to avoid disclosure of individual operations.

a Estimate discontinued.

1 Excludes New York grown apples processed in other states.

2 Included in Total Received.

3 Includes vinegar, jelly, apple butter, mincemeat, fresh slices and dried.

4 Unconcentrated.

SOURCE: New York State Department of Agriculture and Markets, Agricultural Statistics Service, *Annual Bulletin 2002-2003*; <http://www.nass.usda.gov/ny/Bulletin/2003/03-p027.pdf> (last viewed February 25, 2004).

TABLE N-45

**Apple Production by Utilization and Price
New York State — 1996-2002**

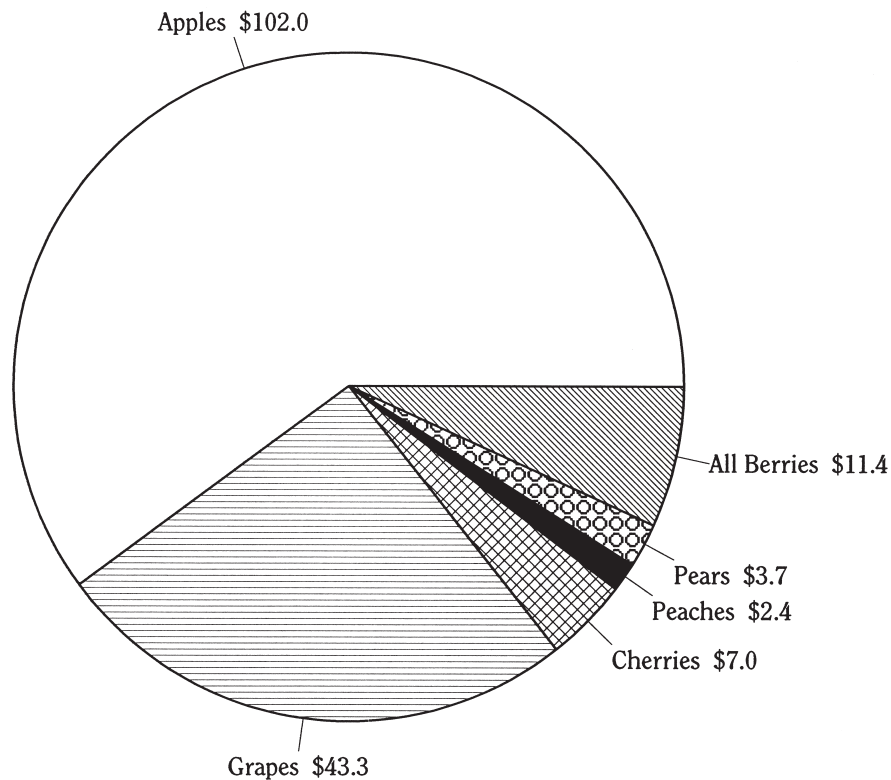
	Unit	1996	1997	1998	1999	2000	2001	2002
Fresh Use								
Quantity	million pounds	500	520	420	590	460	420	310
Marketing Year Average Price	cents per pound	17.7	17.6	15.8	16.5	17.0	18.4	25.0
Processed								
Quantity	million pounds	530	600	540	640	475	520	320
Marketing Year Average Price ¹	dollars per ton	\$ 190	\$ 166	\$ 160	\$ 134	\$ 130	\$ 133	\$ 153
Canned								
Quantity	million pounds	300	335	292	310	246	320	228
Marketing Year Average Price	dollars per ton	\$ 212	\$ 186	\$ 192	\$ 164	\$ 158	\$ 152	\$ 166
Juice and Cider								
Quantity	million pounds	182	160	170	266	189	155	65
Marketing Year Average Price	dollars per ton	\$ 146	\$ 106	\$ 92	\$ 90	\$ 88	\$ 86	\$ 100
Frozen								
Quantity	million pounds	35	88	68	45	26	30	20
Marketing Year Average Price	dollars per ton	\$ 226	\$ 202	\$ 200	\$ 168	\$ 168	\$ 150	\$ 182
Other ²								
Quantity	million pounds	13	17	10	19	14	15	7
Marketing Year Average Price	dollars per ton	\$ 188	\$ 144	\$ 129	\$ 164	\$ 128	\$ 164	\$ 120

1 Packinghouse door equivalent price.

2 Includes vinegar, jelly, apple butter, mincemeat, fresh slices, and dried.

SOURCE: New York State Department of Agriculture and Markets, Agricultural Statistics Service, *Annual Bulletin 2002-2003*; <http://www.nass.usda.gov/ny/Bulletin/2003/03-p027.pdf> (last viewed February 25, 2004).

**FIGURE N-5
Relative Value of New York Fruit Crops — 2002
(million dollars)**



SOURCE: New York State Department of Agriculture and Markets, Agricultural Statistics Service, *Annual Bulletin 2002-2003*; <http://www.nass.usda.gov/ny/Bulletin/2003/03-crops.pdf> (last viewed February 25, 2004).

TABLE N-46

**Berries by Area Harvested, Yield, Production and Value
New York State — 1996-2002**

	Units	1996	1997	1998	1999	2000	2001	2002
Strawberries								
Area Harvested	acres	1,900	1,600	1,600	1,600	1,600	1,600	1,400
Production								
Total	thousand pounds	7,400	6,700	6,100	7,800	6,500	6,000	6,300
Marketing Year Average Price	dollars per cwt.	\$ 120.00	\$ 101.00	\$ 115.00	\$ 106.00	\$ 105.00	\$ 118.00	\$ 140.00
Value of Utilized Production	thousand dollars	\$ 8,880	\$ 6,767	\$ 7,015	\$ 8,268	\$ 6,825	\$ 7,080	\$ 8,820
Blueberries								
Area Harvested	acres	650	700	700	700	700	700	700
Production								
Total	thousand pounds	1,300	1,600	1,600	1,900	2,000	1,700	2,100
Utilized	thousand pounds	1,200	1,500	1,500	1,600	1,900	1,500	1,900
Marketing Year Average Price	dollars per pound	\$ 1.02	\$ 1.07	\$ 1.02	\$ 1.08	\$ 0.96	\$ 1.18	\$ 1.34
Value of Utilized Production	thousand dollars	\$ 1,229	\$ 1,602	\$ 1,536	\$ 1,733	\$ 1,816	\$ 1,765	\$ 2,550

SOURCE: New York State Department of Agriculture and Markets, Agricultural Statistics Service, *Annual Bulletin 2002-2003*; <http://www.nass.usda.gov/ny/Bulletin/2003/03-p027.pdf> (last viewed February 25, 2004).

TABLE N-47

**Sweet Cherries, Peaches and Pears by Bearing Acres, Production and Value
New York State — 1996-2002**

	Units	1996	1997	1998	1999	2000	2001	2002
Sweet Cherries								
Acres of Bearing Age	thousands	0.50	0.75	0.75	0.75	0.70	0.70	0.70
Production								
Total	tons	700	650	700	1,050	900	1,100	350
Utilized ¹	tons	600	620	650	1,000	900	1,050	350
Marketing Year Average Price	dollars per ton	\$ 1,420	\$ 1,720	\$ 2,070	\$ 1,490	\$ 1,370	\$ 1,530	\$ 1,730
Value of Utilized Production	thousand dollars	\$ 854	\$ 1,069	\$ 1,346	\$ 1,494	\$ 1,230	\$ 1,610	\$ 605
Peaches								
Acres of Bearing Age	thousands	1.6	1.6	1.6	1.6	1.6	1.6	1.7
Production								
Total	million pounds	12.0	12.0	10.0	14.0	12.0	12.5	10.0
Utilized ¹	million pounds	11.5	11.5	8.5	12.0	11.3	12.0	10.0
Marketing Year Average Price	cents per pound	34.8	46.1	41.6	45.4	40.0	31.3	23.8
Value of Utilized Production	thousand dollars	\$ 4,003	\$ 5,296	\$ 3,538	\$ 5,454	\$ 4,524	\$ 3,736	\$ 2,375
Pears								
Acres of Bearing Age	thousands	2.4	2.0	2.0	2.0	2.0	2.0	1.4
Production								
Total	tons	15,000	8,000	11,500	12,500	14,500	11,000	10,000
Utilized ¹	tons	15,000	8,000	10,000	11,300	12,900	10,000	9,850
Marketing Year Average Price	dollars per ton	\$ 383	\$ 384	\$ 375	\$ 388	\$ 353	\$ 401	\$ 374
Value of Utilized Production	thousand dollars	\$ 5,748	\$ 3,070	\$ 3,754	\$ 4,390	\$ 4,551	\$ 4,008	\$ 3,682

1 Excludes mature fruit not harvested.

SOURCE: New York State Department of Agriculture and Markets, Agricultural Statistics Service, *Annual Bulletin 2002-2003*; <http://www.nass.usda.gov/ny/Bulletin/2003/03-p027.pdf> (last viewed February 25, 2004).

TABLE N-48

**Tart Cherries by Bearing Acres, Production, Utilization and Value
New York State — 1996-2002**

	Units	1996	1997	1998	1999	2000	2001(r)	2002
Acres of Bearing Age	thousands	3.5	2.6	2.6	2.6	2.2	2.0	2.0
Production								
Total	million pounds	19.0	14.5	14.0	17.0	16.6	14.7	12.7
Utilized ¹	million pounds	14.2	13.2	12.2	17.0	16.6	14.1	12.7
Marketing Year Average Price	cents per pound	14.4	17.3	18.0	15.7	21.3	19.6	50.6
Value of Utilized Production	thousand dollars	\$ 2,042	\$ 2,286	\$ 2,200	\$ 2,666	\$ 3,536	\$ 2,763	\$ 6,420
Fresh Use								
Quantity	million pounds	0.2	0.2	0.2	0.1	0.1	0.1	0.1
Marketing Year Average Price	cents per pound	76.0	103.0	98.0	80.0	120.0	103.0	120.0
Processed								
Total	million pounds	14.0	13.0	12.0	16.9	16.5	14.0	12.6
Marketing Year Average Price	cents per pound	13.5	16.0	16.7	15.3	20.7	19.0	50.0

r Revised.

1 Excludes mature fruit not harvested.

SOURCE: New York State Department of Agriculture and Markets, Agricultural Statistics Service, *Annual Bulletin 2002-2003*; <http://www.nass.usda.gov/ny/Bulletin/2003/03-p027.pdf> (last viewed February 25, 2004).

TABLE N-49

**Grapes by Bearing Acres, Production, Utilization and Value
New York State — 1996-2002**

	Unit	1996	1997	1998	1999	2000	2001	2002
Acres of Bearing Age	thousands	33.0	31.5	31.5	31.5	31.5	31.5	31.0
Production								
Total of All Varieties	tons	189,000	139,000	128,000	205,000	154,000	149,000	156,000
Utilized All Varieties	tons	184,000	137,000	125,000	204,000	154,000	149,000	155,000
Marketing year Average Price	dollars per ton	\$ 257	\$ 292	\$ 311	\$ 286	\$ 298	\$ 302	\$ 208
Value of Utilized Production	thousand dollars	\$ 47,220	\$ 40,024	\$ 38,884	\$ 58,366	\$ 45,940	\$ 45,004	\$ 43,336
Fresh Use								
Quantity	tons	4,000	3,000	2,000	2,000	2,000	1,000	2,000
Marketing Year Average Price	dollars per ton	\$ 600	\$ 790	\$ 500	\$ 600	\$ 550	\$ 900	\$ 860
Processed								
Quantity	tons	180,000	134,000	123,000	202,000	152,000	148,000	153,000
Marketing Year Average Price	dollars per ton	\$ 249	\$ 281	\$ 308	\$ 283	\$ 295	\$ 298	\$ 272
Wine								
Quantity	tons	58,000	44,000	36,000	50,000	41,000	41,000	44,000
Marketing Year Average Price	dollars per ton	\$ 282	\$ 328	\$ 392	\$ 348	\$ 377	\$ 391	\$ 369
Sweet Juice and Other								
Quantity	tons	122,000	90,000	87,000	152,000	111,000	107,000	109,000
Marketing Year Average Price	dollars per ton	\$ 234	\$ 258	\$ 273	\$ 262	\$ 265	\$ 262	\$ 233

SOURCE: New York State Department of Agriculture and Markets, Agricultural Statistics Service, *Annual Bulletin 2002-2003*; <http://www.nass.usda.gov/ny/Bulletin/2003/03-p027.pdf> (last viewed February 25, 2004).

TABLE N-50

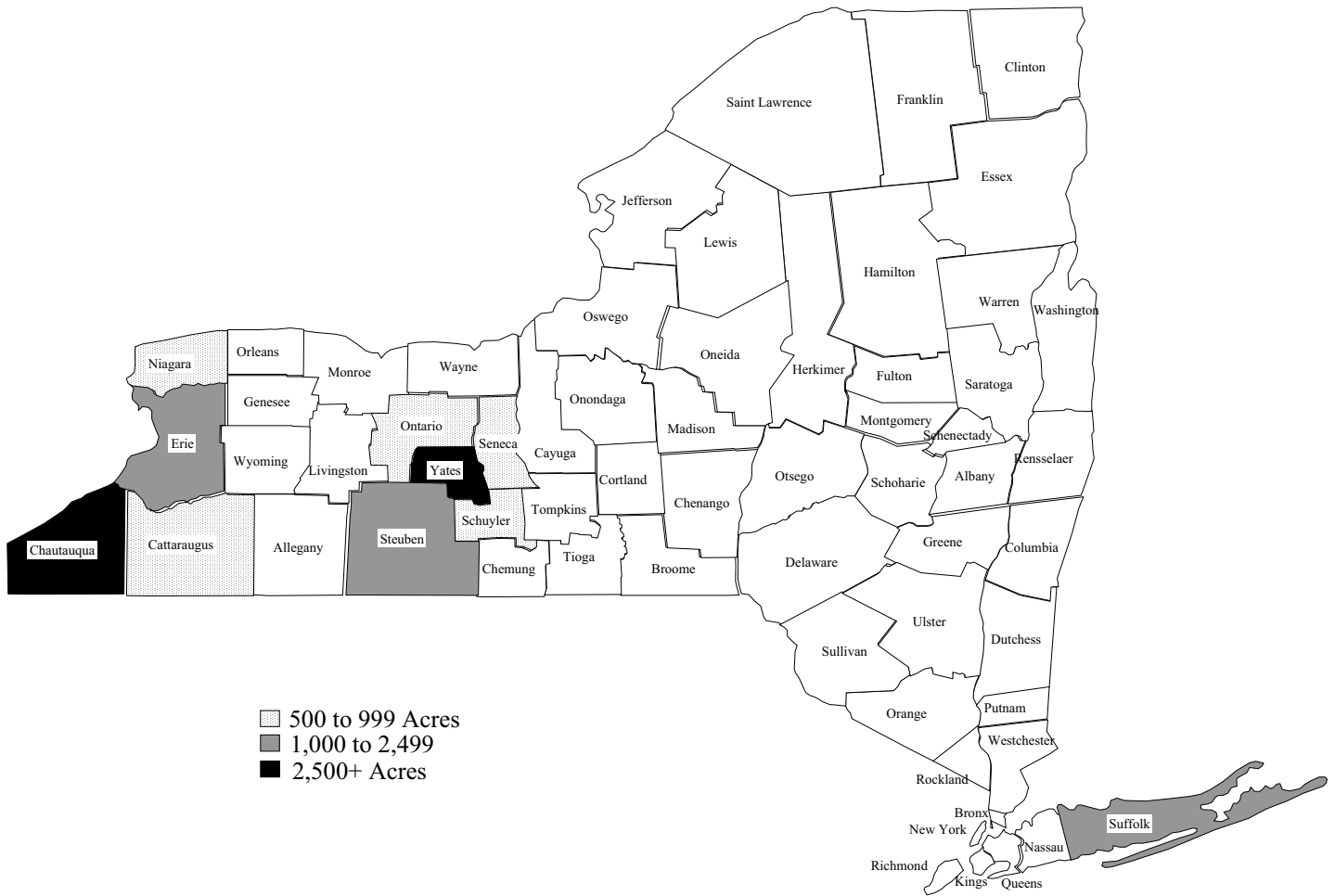
**Number of Grape Farms, Acres and Production by County
New York State — 1996 and 2001**

County	1996			2001		
	Farms	Acres	Production (tons)	Farms	Acres	Production (tons)
Total	990	31,401	189,259	962	32,994	154,480
Chautauqua-Erie	554	17,845	116,614	529	20,055	102,072
Cattaraugus	12	343	2,224	19	517	2,449
Chautauqua	498	15,500	102,772	467	17,877	91,901
Erie	44	2,002	11,618	43	1,661	7,722
Niagara County	68	1,040	5,083	48	901	4,229
Finger Lakes	258	10,087	60,265	258	9,124	41,403
Ontario	32	605	2,816	31	503	1,746
Schuyler	34	984	4,254	29	871	4,142
Seneca	18	866	4,916	26	858	3,591
Steuben	45	1,884	12,089	40	1,680	6,707
Yates	129	5,748	36,190	132	5,212	25,217
Other Western Counties	19	327	1,183	22	374	1,184
Monroe	3	46	181	7	131	438
Wayne	5	220	775	5	180	485
Chemung, Livingston, Onondaga Orleans, Tompkins, Wyoming, Cayuga, and Broome	11	61	227	10	63	261
Eastern Counties	91	2,102	6,114	105	2,541	5,592
Columbia	16	153	256	16	152	375
Dutchess	8	135	488	7	105	324
Suffolk	36	1,557	4,789	54	1,927	4,085
Ulster	21	149	511	20	161	300
Albany, Greene, Orange Rensselaer, Saratoga, Westchester, Rockland, Nassau	10	108	70	8	196	508

NOTE: Detail may not add to totals due to rounding.

SOURCE: New York State Department of Agriculture and Markets, Agricultural Statistics Service.

FIGURE N-6
Leading Grape Counties
New York State — 2001



SOURCE: New York State Department of Agriculture and Markets.

TABLE N-51
Number of Farms Producing Grapes,
by Size of Plantings
New York State — 1996 and 2001

Grape Acres per Farm	1996				2001			
	Farms		Acres		Farms		Acres	
	Number	Percent	Number(r)	Percent	Number	Percent	Number	Percent
Total	990	100%	31,401	100%	962	100%	32,994	100%
Under 2	24	2	23	a	29	3	30	a
2 - 4.9	113	12	325	1	125	13	405	1
5 - 9.9	193	19	1,233	4	176	18	1,149	3
10 - 19.9	230	23	2,862	9	230	24	3,179	10
20 - 49.9	235	24	6,957	22	215	22	6,812	21
50 - 99.9	118	12	7,296	23	103	11	6,980	21
100 - 199.9	58	6	6,987	23	65	7	9,306	28
200 and Over	19	2	5,718	18	19	2	5,133	16

r Revised.

a Less than one percent.

SOURCE: New York State Department of Agriculture and Markets, Agricultural Statistics Service.

TABLE N-52

**Grape Acres, Production and Intentions
New York State by Variety — 2001**

All Varieties	Acres of all Ages	Production (tons)	Removal Prior to 2002 Harvest	Intentions to Plant in 2002
New York State	32,994	154,480	345	469
Aurora	738	2,438	86	2
Baco Noir	276	1,332	11	1
Cabernet Franc	341	646	2	32
Cabernet Sauvignon	341	783	2	18
Catawba	1,570	8,609	11	—
Cayuga	266	1,193	—	3
Chambourcin	41	85	—	1
Chancellor	49	196	1	—
Chardonnay	1,103	3,098	21	24
Concord	20,584	104,590	64	130
DeChaunac	165	833	27	—
Delaware	242	661	16	4
Elvira	679	4,164	5	38
Fredonia	32	131	—	—
Gewurtztraminer	83	220	—	4
Isabella	39	103	2	—
Ives	56	198	3	—
Leon Millot	30	116	—	3
Marechal Foch	102	354	—	—
Merlot	671	1,520	1	55
Moore's Diamond	47	112	—	—
Niagara	3,352	16,637	22	36
Pinot Gris	48	68	—	13
Pinot Noir	235	543	4	10
Ravat 51	83	217	—	—
Rougeon	90	428	—	—
Savignon Blanc	67	156	—	5
Seyval Blanc	331	1,245	35	1
Ventura	96	592	—	—
Vidal Blanc	132	432	10	4
White Riesling	461	1,385	3	30
Other	648	1,395	19	55

NOTE: Detail may not add to totals due to rounding.
— Represents zero.

SOURCE: New York State Department of Agriculture and Markets, Agricultural Statistics Service.

TABLE N-53
Processed Grapes Production by Variety
New York State
1995—2002
(tons)

Variety	1995	1996	1997	1998	1999	2000	2001	2002
All Varieties ¹	159,000	180,000	134,000	123,000	202,000	152,000	148,000	153,000
American Varieties								
Catawba	8,700	7,900	7,335	6,090	9,600	6,400	7,760	6,680
Concord	111,000	139,000	96,600	89,400	154,500	113,300	107,200	107,770
Delaware	2,350	1,650	1,010	550	1,180	630	550	820
Dutchess	250	120	b	b	b	b	b	b
Ives	a	a	130	115	210	140	150	165
Elvira	4,600	5,100	4,110	3,080	4,540	3,660	3,950	4,200
Niagara	15,600	10,700	12,800	10,000	17,200	13,900	15,100	18,880
French Hybrids								
Aurora	5,250	4,900	3,295	4,080	4,240	4,060	2,880	4,100
Baco Noir	1,300	1,200	670	890	730	720	990	930
Cayuga White	740	1,000	630	840	860	740	670	830
DeChaunac	1,450	910	575	710	940	670	850	590
Rougeon	800	720	585	420	660	540	680	625
Seyval Blanc	900	900	600	650	850	550	610	590
Vitis Vinifera, All	3,435	3,700	3,650	4,015	4,030	4,670	4,410	4,620
Other Varieties ²	2,625	2,200	2,010	2,160	2,460	2,020	2,200	2,200

a Estimates began in 1997.

b Discontinued, is now included in Other Varieties.

1 Includes New York grown grapes received at out-of-state plants.

2 Includes other American and French Hybrid varieties not shown.

SOURCE: New York State Department of Agriculture and Markets, Agricultural Statistics Service, *Annual Bulletin 2002-2003*; <http://www.nass.usda.gov/ny/Bulletin/2003/03-p027.pdf> (last viewed February 25, 2004).

TABLE N-54

Cash Receipts From Farm Marketings
New York State by County — 2002
(thousands)

County	All Products	All Livestock	All Crops
New York State	\$ 3,094,110	\$ 1,870,160	\$ 1,223,950
Albany	15,571	8,018	7,553
Allegany	36,242	31,767	4,475
Broome	25,279	19,658	5,621
Cattaraugus	56,163	44,799	11,364
Cayuga	124,917	79,840	45,077
Chautauqua	99,025	62,337	36,688
Chemung	13,359	8,858	4,501
Chenango	55,334	51,628	3,706
Clinton	72,452	53,436	19,016
Columbia	70,423	49,240	21,183
Cortland	39,344	36,158	3,186
Delaware	45,545	40,441	5,104
Dutchess	36,862	16,208	20,654
Erie	81,948	46,059	35,889
Essex	a	a	a
Franklin	47,265	40,553	6,712
Fulton	10,271	8,851	1,420
Genesee	138,167	62,812	75,355
Greene	9,004	5,143	3,861
Hamilton	a	a	a
Herkimer	48,488	44,469	4,019
Jefferson	80,120	72,878	7,242
Lewis	65,438	62,295	3,143
Livingston	78,207	48,152	30,055
Madison	70,114	59,860	10,254
Monroe	59,491	9,308	50,183
Montgomery	51,111	43,180	7,931
Nassau	3,622	194	3,428
Niagara	68,939	19,823	49,116
Oneida	79,684	60,717	18,967
Onondaga	75,470	50,278	25,192
Ontario	89,538	41,433	48,105
Orange	89,959	25,887	64,072
Orleans	82,374	9,085	73,289
Oswego	41,416	13,946	27,470
Otsego	53,766	49,158	4,608
Putnam	a	a	a
Rensselaer	30,767	19,859	10,908
Rockland	a	a	a
St. Lawrence	93,704	86,788	6,916
Saratoga	31,105	21,273	9,832
Schenectady	6,689	1,614	5,075
Schoharie	28,795	21,929	6,866
Schuyler	14,599	10,614	3,985
Seneca	42,193	20,613	21,580
Steuben	80,626	55,310	25,316
Suffolk	183,718	9,063	174,655
Sullivan	21,152	18,715	2,437
Tioga	29,219	25,438	3,781
Tompkins	44,954	36,582	8,372
Ulster	52,522	4,658	47,864
Warren	a	a	a
Washington	81,132	69,951	11,181
Wayne	119,327	32,457	86,870
Westchester	a	a	a
Wyoming	143,403	128,373	15,030
Yates	47,155	21,436	25,719
Other Counties	28,142	9,018	19,124

a Included in Other Counties.

SOURCE: New York State Department of Agriculture and Markets, New York Agricultural Statistics Service and U.S. Department of Agriculture, *Annual Bulletin 2002-2003*; <http://www.nass.usda.gov/ny/Bulletin/2003/03-p086.pdf> (last viewed February 25, 2004).

TABLE N-55
Farm Balance Sheet
New York State — 1995-2001(a)
(million dollars)

Item	1995(r)	1996(r)	1997(r)	1998(r)	1999(r)	2000(r)	2001
Farm Assets	\$ 12,218	\$ 12,271	\$ 12,244	\$ 13,007	\$ 12,987	\$ 13,672	\$ 14,197
Real Estate	8,165	8,100	8,294	8,683	8,765	9,324	9,817
Livestock and Poultry ¹	1,138	1,176	1,102	1,272	1,360	1,360	1,360
Machinery and Motor Vehicles ²	1,820	1,834	1,612	1,632	1,679	1,657	1,656
Crops ³	352	392	439	507	252	308	328
Purchased Inputs	73	95	106	109	87	106	91
Financial	670	675	689	803	845	917	944
Farm Debt ⁴	\$ 2,171	\$ 2,238	\$ 2,352	\$ 2,419	\$ 2,455	\$ 2,569	\$ 2,699
Real Estate	854	851	839	830	980	1,010	1,070
Nonreal estate	1,318	1,387	1,513	1,589	1,475	1,545	1,629
Equity	\$ 10,046	\$ 10,033	\$ 9,892	\$ 10,588	\$ 10,532	\$ 11,116	\$ 11,498
Debt/Equity	21.6%	22.3%	23.8%	22.9%	23.3%	23.0%	23.5%
Debt/Assets	17.8	18.2	19.2	18.6	18.9	18.3	19.0

NOTE: Detail may not add to totals due to rounding.

r Revised.

a As of December 31.

1 Excludes horses, mules and broilers.

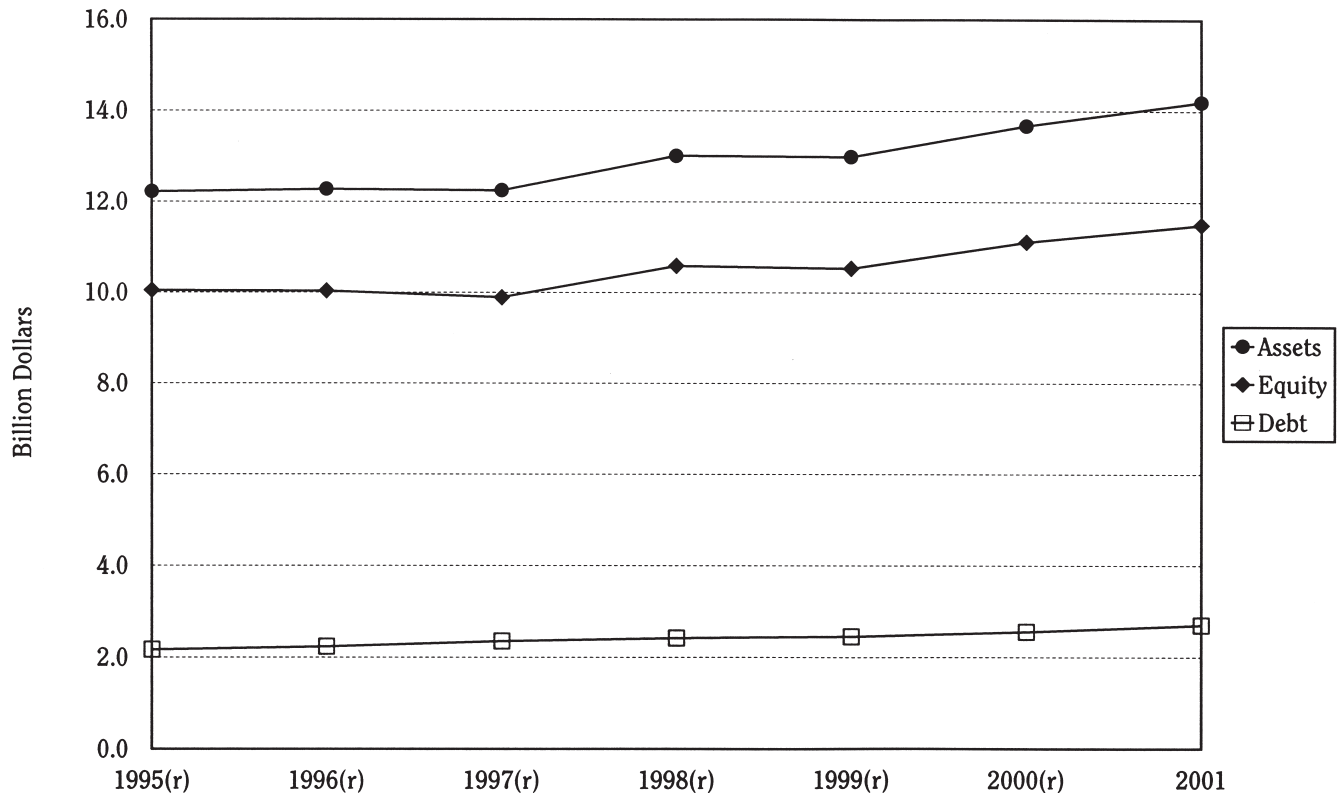
2 Includes only farm share value for trucks and autos.

3 All non-CCC crops held on farms plus the value above loan rate for crops held under CCC.

4 Excludes debt for nonfarm purposes.

SOURCE: New York State Department of Agriculture and Markets, Agricultural Statistics Service, *Annual Bulletin 2002-2003*; <http://www.nass.usda.gov/ny/Bulletin/2003/03-p007.pdf> (last viewed February 25, 2004).

FIGURE N-7
Farm Balance Sheet
New York State — 1995-2001(a)



r Revised.

a As of December 31.

SOURCE: New York State Department of Agriculture and Markets, Agricultural Statistics Service, *Annual Bulletin 2002-2003*; <http://www.nass.usda.gov/ny/Bulletin/2003/03-p007.pdf> (last viewed February 25, 2004).

TABLE N-56
Value Added to New York Economy by Agriculture
1997-2001
(thousand dollars)

Item	1997(r)	1998(r)	1999(r)	2000(r)	2001
Net Farm Income	\$ 193,342	\$ 450,493	\$ 676,229	\$ 594,423	\$ 802,820
Payments to Stakeholders	\$ 588,326	\$ 603,740	\$ 565,316	\$ 627,061	\$ 629,287
Employee Compensation (total hired labor)	390,047	406,618	364,989	417,325	414,722
Net Rent Received by Nonoperator Landlords	21,865	15,446	16,119	18,288	23,664
Real Estate and Nonreal Estate Interest	176,414	181,676	184,208	191,448	190,901
Net Value Added	\$ 781,668	\$ 1,054,233	\$ 1,241,545	\$ 1,221,484	\$ 1,432,107
Capital Consumption	\$ 375,963	\$ 380,242	\$ 390,316	\$ 389,735	\$ 393,976
Gross Value Added	\$ 1,157,631	\$ 1,434,475	\$ 1,631,861	\$ 1,611,219	\$ 1,826,083
Value of Agricultural Sector Production	\$ 3,063,865	\$ 3,390,223	\$ 3,476,993	\$ 3,379,146	\$ 3,743,481
Final Crop Output	\$ 1,010,766	\$ 1,047,832	\$ 1,119,997	\$ 1,149,654	\$ 1,222,057
Food Grains	24,354	17,781	18,649	15,155	19,684
Feed Crops	172,242	172,745	144,734	159,714	170,739
Oil Crops	16,151	12,661	22,899	20,460	25,096
Fruits and Tree Nuts	203,802	189,466	207,308	200,821	178,397
Vegetables	313,633	389,048	399,743	470,667	482,006
All Other Crops	271,057	294,045	303,568	323,967	323,241
Home Consumption	2,628	2,628	2,697	2,561	2,593
Value of Inventory Adjustment	6,899	-30,542	20,399	-43,691	20,301
Value of Livestock Production	\$ 1,788,850	\$ 2,077,728	\$ 2,052,441	\$ 1,862,685	\$ 2,232,863
Meat Animals	125,245	118,818	131,244	181,773	165,908
Dairy Products	1,526,158	1,786,862	1,743,094	1,543,966	1,840,858
Poultry and Eggs	86,704	91,654	86,473	96,264	99,979
Miscellaneous Livestock	89,984	94,415	88,527	108,724	113,882
Home Consumption	4,102	3,448	3,390	3,449	3,223
Value of Inventory Adjustment	-43,343	-17,469	-287	-71,491	9,013
Revenue from Services and Forestry	\$ 264,249	\$ 264,663	\$ 304,555	\$ 366,808	\$ 288,560
Machine Hire and Customwork	36,221	27,384	16,817	37,999	22,201
Forest Products Sold	9,618	10,099	10,125	11,846	11,135
Other Farm Income	73,544	80,203	131,258	161,954	95,882
Gross Imputed Rental Value of Farm Dwellings	144,866	146,977	146,355	155,009	159,342
Purchased Inputs	\$ 1,754,235	\$ 1,820,234	\$ 1,768,943	\$ 1,738,623	\$ 1,837,613
Farm Origin	618,110	655,754	609,684	597,606	629,031
Feed Purchased	484,335	511,970	478,877	436,306	465,720
Livestock and Poultry Purchased	14,396	14,414	19,370	30,649	30,099
Seed Purchased	119,379	129,370	111,437	130,651	133,212
Manufactured Inputs	405,922	371,718	358,270	395,093	405,642
Fertilizers and Lime	113,375	108,440	104,662	101,909	111,914
Pesticides	88,475	91,329	82,766	85,620	88,475
Petroleum Fuel and Oils	111,276	99,156	91,547	121,266	120,936
Electricity	92,796	72,793	79,295	86,298	84,317
Other Purchased Inputs	730,203	792,762	800,989	745,924	802,940
Repair and Maintenance of Capital Items	197,874	221,317	203,792	217,181	221,249
Machine Hire and Customwork	49,087	65,012	61,452	59,547	67,687
Marketing, Storage and Transportation Expenses	139,943	117,325	132,351	126,922	138,252
Contract Labor	15,466	17,910	19,239	13,334	10,194
Miscellaneous Expenses	327,833	371,198	384,155	328,940	365,558
Net Government Transactions	\$ -151,999	\$ -135,514	\$ -76,189	\$ -29,304	\$ -79,785
Director Government Payments	39,623	60,799	120,397	159,876	114,039
Motor Vehicle Registration and Licensing Fees	5,582	6,478	5,648	7,481	5,966
Property Taxes	186,040	189,835	190,938	181,699	187,858

NOTE: Detail may not add to totals due to rounding.
r Revised.

SOURCE: New York State Department of Agriculture and Markets, Agricultural Statistics Service, *Annual Bulletin 2002-2003*; <http://www.nass.usda.gov/ny/Bulletin/2003/03-p008.pdf> (last viewed February 25, 2004).