



Section J

Education

Information on education in New York State — including enrollment; school finance; degrees granted; tuition assistance; libraries; cultural organizations; and public broadcasting.

Highlights

- Close to 3.2 million students were enrolled in public and nonpublic elementary and secondary schools in Fall 2006, nearly one-quarter below the peak enrollment of 4.3 million in 1970.
- Brooklyn (Kings County) had the highest 2006 public school enrollment in New York, and accounted for 23 percent of students in nonpublic schools in the State.
- New York's public elementary and secondary schools had 227,805 classroom teachers serving over 2.7 million students in 2006 compared to 188,817 teachers serving 3.5 million students in 1970.
- New York's public elementary and secondary schools spent \$46.3 billion in 2006, financed by property taxes and other local revenues (50.5%), State aid (43%), and Federal aid (6.2%).
- There were 826.5 thousand full-time and 343 thousand part-time students in degree-credit enrollments in New York's higher education institutions in 2007.
- Nearly 321 thousand students received State Tuition Assistance Program (TAP) aid in the 2006-07 year, down 2.86 percent from 2005-06.
- The 6,595 libraries in New York had over 245 million volumes and nearly 12,000 professional staff in 2006. Colleges and universities accounted for under 4 percent of the libraries but over 36 percent of the volumes.

- | | |
|--------------------------------------------------------------------------------------------------------------------------|----------------------------------------------------------------------------------------------------------------------------------------------------------------|
| J-1 Public Elementary and Secondary School Enrollment, US by State: Selected Years 1980-2004 | J-9 Professional Positions in Public Elementary and Secondary Schools by Type of Position, NYS by County: 2004-06 |
| J-2 Public School Districts by Kind of District, NYS: Selected Years 1930-2006 | J-10 Public High School Graduates, NYS by County: School Years 1996-97 — 2005-06 |
| J-3 Fall Enrollment in Public and Nonpublic Elementary and Secondary Schools, NYS: 1960-2006 | J-11 Nonpublic High School Graduates, NYS by County: School Years 1996-97 — 2005-06 |
| J-4 Fall Enrollment in Public Elementary and Secondary Schools by Grade, NYS: 1994-2006 | J-12 Public High School Graduates Entering Institutions of Higher Education, NYS: 1997-2006 |
| J-5 Fall Enrollment in Public Elementary and Secondary Schools, NYS by County: 1997-2006 | J-13 Public High School Dropout Rate, NYS by County: School Years Ended 2000-06 |
| J-6 Fall Enrollment in Nonpublic Elementary and Secondary Schools, NYS by County: 1997-2006 | J-14 Educational Attainment of Residents Age 25 and Over by Race and Spanish Origin, NYS: 2000 |
| J-7 Fall Enrollment in Nonpublic Elementary and Secondary Schools by Affiliation, NYS: 2005 and 2006 | J-15 Degree-Credit Fall Enrollment in Institutions of Higher Education by Sector, NYS: 1999-2007 |
| J-8 Professional Positions in Public Elementary and Secondary Schools by Type of Position, NYS: Selected Years 1945-2006 | J-16 Degree-Credit Fall Enrollment and First-Time Students in Institutions of Higher Education by Level of Program and Institutional Classification, NYS: 2007 |



- J-17 Degrees Granted by Institutions of Higher Education by Level of Degree and by Sector, NYS: Selected Academic Years 1994-95 — 2005-06
- J-18 Scholarships and Awards, NYS: Academic Years 2002-03 — 2006-07
- J-19 Student Tuition Assistance Program Recipients and Expenditures by Level of Study, NYS: Fiscal Years 2002-03 — 2006-07
- J-20 Tuition Assistance Program Recipients by Level of Study and Type of Institution, NYS: Academic Years 2002-03 — 2006-07
- J-21 Tuition Assistance Program Expenditures by Level of Study and Type of Institution, NYS: Academic Years 2002-03 — 2006-07
- J-22 Student Aid for Part-Time Study (APTS) Program Recipients, NYS: Academic Years 2002-03 — 2006-07
- J-23 Amount of Student Loans, Grants, and Scholarships Administered by HESC, NYS: 2002-03 — 2006-07
- J-24 Applications Received and Processed by HESC for Loans, Grants, and Scholarships, NYS: Academic Years 2002-03 — 2006-07
- J-25 Loans Guaranteed for Educational Purposes, NYS: Fiscal Years 2002-03 — 2006-07
- J-26 Student Loans Guaranteed, NYS: Fiscal Years 2002-03 — 2006-07
- J-27 Student Loans Outstanding, NYS: Fiscal Years 2002-03 — 2006-07
- J-28 State University of New York Fall Credit Course Enrollment: Selected Years 1960-2007
- J-29 State University of New York Credit Course Enrollment by Institution and Full-/Part-Time Status: Fall 2007
- J-30 State University of New York Degrees and Certificates Awarded: Academic Years 1950-51 — 2006-07
- J-31 State University of New York Degrees and Other Formal Awards Granted by Institution and Award Level: July 1, 2006 — June 30, 2007
- J-32 State University of New York Employees by Institution and Full- and Part-Time Status: Fall 2007
- J-33 Revenues of Public Elementary and Secondary Schools by Source of Revenue, NYS: Selected School Years 1964-65 — 2005-06
- J-34 Revenues of Public Elementary and Secondary Schools by Source of Revenues, NYS by County: School Year 2005-06
- J-35 Expenditures of Public Elementary and Secondary Schools by Major Category of Expenditure, NYS: Selected School Years 1964-65 — 2005-06
- J-36 Expenditures per Pupil in Public Elementary and Secondary Schools by Major Category of Expenditure, NYS: Selected School Years 1964-65 — 2005-06
- J-37 Expenditures of Public Elementary and Secondary Schools by Major Category of Expenditure, NYS by County: School Year 2005-06
- J-38 Libraries by Type, NYS: 1995 and 2006
- J-39 Public and Association Libraries, NYS: 2000-06
- J-40 New York State Archives, Accessions, Holdings, and Research Inquiries: 1978-2007
- J-41 Active Museums, Historical Societies, and Other Cultural Organizations, NYS by County: 2007
- J-42 State and Federal Support for the Arts by Type of Program and Funding Source, NYS: Fiscal Years 2002-03 — 2007-08
- J-43 State Aid to Localities for Support of the Arts, NYS by County: Fiscal Years 2002-03 — 2007-08
- J-44 Public Television Stations, NYS: Fiscal Year 2007-08
- J-45 Public Radio Broadcasting, NYS: Fiscal Years 2006-07 and 2007-08
- Figures**
- J-1 Number of Student Loans Guaranteed, NYS: 2002-03 — 2006-07
- J-2 Loan Dollars Guaranteed by Program, NYS: Fiscal Year 2006-07

TABLE J-1
Public Elementary and Secondary School Enrollment
United States by State — Selected Years 1980-2004(a)
(thousands)

	Elementary ¹				Secondary ²			
	1980(r)	1990(r)	2000(r)	2004(e)	1980(r)	1990(r)	2000(r)	2004(e)
United States	27,647	29,878	33,688	34,178	13,231	11,338	13,515	14,617
Alabama	528	527	539	522	231	195	201	208
Alaska	60	85	94	92	26	29	39	41
Arizona	357	479	641	722	157	161	237	321
Arkansas	310	314	318	328	138	123	132	135
California	2,730	3,615	4,408	4,508	1,347	1,336	1,733	1,934
Colorado	374	420	517	541	172	154	208	225
Connecticut	364	347	406	404	168	122	156	173
Delaware	62	73	81	84	37	27	34	35
District of Columbia	71	61	54	57	29	19	15	20
Florida	1,042	1,370	1,760	1,858	468	492	675	782
Georgia	742	849	1,060	1,118	327	303	385	435
Hawaii	110	123	132	129	55	49	52	54
Idaho	144	160	170	178	59	61	75	78
Illinois	1,335	1,310	1,474	1,484	649	512	575	614
Indiana	708	676	703	720	347	279	286	301
Iowa	351	345	334	324	183	139	161	154
Kansas	283	320	323	321	133	117	147	148
Kentucky	464	459	471	486	206	177	194	189
Louisiana	544	586	547	534	234	199	197	191
Maine	153	155	146	136	70	60	61	63
Maryland	493	527	609	597	258	188	244	268
Massachusetts	676	604	703	682	346	230	273	293
Michigan	1,227	1,145	1,222	1,211	570	440	498	539
Minnesota	482	546	578	558	272	211	277	280
Mississippi	330	372	364	361	147	131	134	134
Missouri	567	588	645	629	277	228	268	277
Montana	106	111	105	99	50	42	50	48
Nebraska	189	198	195	195	91	76	91	91
Nevada	101	150	251	289	49	51	90	111
New Hampshire	112	126	147	140	55	46	61	67
New Jersey	820	784	968	976	426	306	346	417
New Mexico	186	208	225	228	85	94	95	98
New York	1,838	1,828	2,029	1,943	1,033	770	853	893
North Carolina	786	783	945	986	343	304	348	400
North Dakota	77	85	72	67	40	33	37	33
Ohio	1,312	1,258	1,294	1,267	645	514	541	573
Oklahoma	399	425	445	453	179	154	178	177
Oregon	319	340	379	377	145	132	167	176
Pennsylvania	1,231	1,172	1,258	1,235	678	496	556	593
Rhode Island	98	102	114	107	51	37	44	49
South Carolina	426	452	493	504	193	170	184	199
South Dakota	86	95	88	84	42	34	41	39
Tennessee	602	598	668	671	252	226	241	270
Texas	2,049	2,511	2,943	3,184	851	872	1,117	1,221
Utah	250	325	333	355	93	122	148	148
Vermont	66	71	70	66	29	25	32	32
Virginia	703	728	816	840	307	270	329	365
Washington	515	613	694	695	242	227	310	325
West Virginia	270	224	201	198	113	98	85	83
Wisconsin	528	566	595	578	303	232	285	287
Wyoming	70	71	60	57	28	27	30	27

NOTE: Detail may not add to totals due to rounding.

e Estimated.

r Revised.

a As of Fall each year. Includes unclassified students.

1 Includes kindergarten through grade 8 as well as a small number of pre-kindergarten students.

2 Includes grades 9 through 12.

SOURCE: *Statistical Abstract of the United States, 2008*, www.census.gov/prod/2007pubs/08statab/educ.pdf (last viewed July 22, 2008); U.S. National Center for Education Statistics, *Digest of Education Statistics*, annual.

TABLE J-2

Public School Districts by Kind of District¹
New York State
Selected Years 1930-2006

Year ²	All Districts	Cities ³	Village Superintendencies ⁴	Central	Central High School	Union Free	Common	Non-Operating Schools	BOCES ⁵
1930	9,118	59	90	98	4		8,338	529	—
1935	8,258	59	96	158	5	629	6,626	685	—
1940	6,397	61	96	267	5	495	4,638	835	—
1945	5,112	62	97	319	4	415	2,547	1,668	—
1950	3,390	62	100	400	4	310	1,218	1,296	NA
1955	1,972	62	108	434	4	211	468	685	NA
1960	1,292	62	136	432	4	134	138	386	NA
1965	991	62	173	397	4	104	56	195	71
1970	758	62	214	342	4	86	28	22	51
1975	745	62	256	304	4	90	21	8	46
1976	744	62	261	299	4	92	19	7	45
1977	743	62	264	296	4	93	18	6	44
1978	742	62	268	292	4	93	17	6	44
1979	738	62	269	292	3	91	15	6	44
1980	736	62	271	289	3	91	14	6	44
1981	735	62	271	289	3	90	14	6	44
1982	735	62	271	289	3	90	14	6	44
1983	734	62	271	289	3	89	14	6	43
1984	731	62	271	287	3	88	14	6	43
1985	731	62	273	287	3	87	13	6	43
1986	728	62	272	286	3	87	13	5	42
1987	722	62	272	283	3	86	13	3	41
1988	721	62	273	283	3	84	13	3	41
1989	720	62	275	283	3	82	13	2	41
1990	719	62	275	282	3	83	13	1	41
1991	718	62	276	280	3	83	13	1	41
1992	717	62	276	279	3	83	13	1	41
1993	715	62	276	277	3	83	13	1	38
1994	712	62	277	275	3	82	12	1	38
1995	710	62	278	274	3	81	11	1	38
1996	707	62	278	271	3	81	11	1	38
1997	706	62	278	271	3	81	10	1	38
1998	706	62	278	271	3	81	10	1	38
1999	705	62	278	269	4	81	10	1	38
2000	704	62	278	268	4	81	10	1	38
2001	704	62	278	268	4	81	10	1	38
2002	702	62	278	268	4	79	10	1	38
2003	702	62	278	268	4	79	10	1	38
2004	699	62	280	266	3	77	10	1	38
2005	697	62	280	266	3	75	10	1	38
2006	697	62	280	266	3	75	10	1	37

— Represents zero.

NA Not available.

1 The local units charged with the administration of schools in New York State may be placed in three categories:

- a The “common school district” dates from 1812 and is limited to providing education through the eighth grade. The district was originally set up in 1812 to render “common schooling” or the three Rs. The district was and for the most part has continued to be small in area. Some common districts have consolidated but continue to function as common school districts. The district is governed by a sole trustee or a board of three trustees.
- b City school districts are subdivided into two fiscal categories. School districts of cities of population under 125,000 are fiscally independent. School districts of the “Big Five” cities (population over 125,000) are fiscally dependent and have boundaries that are coterminous with the city.
- c The “union free district,” unlike the common district, may provide high school services when granted a charter by the Board of Regents, although some union free districts provide elementary school services only and in that regard function quite like common

districts. Central school districts and central high school districts, while organized under special provisions of the law, function thereafter as union free districts and may, therefore, properly be put in the category of union free districts. When a union free or central district employs its own superintendent of schools, it is called an independent village superintendency district. Its operation, however, is not changed materially.

- 2 Districts are counted annually in September.
- 3 Includes “Big Five” cities (New York, Buffalo, Rochester, Syracuse, and Yonkers), other smaller independent city districts, and city central districts.
- 4 Includes village central school districts.
- 5 BOCES (Boards of Cooperative Educational Services) are service organizations created by law to do for a district that which it cannot do by or for itself because of size, financial burden, etc. BOCES are not included in the “Total Districts” column because they function as providers of services to regional groups of school districts.

SOURCE: New York State Education Department, Information and Reporting Services.

TABLE J-3

Fall Enrollment in Public and Nonpublic Elementary and Secondary Schools New York State — 1960-2006

Year	Total	Public ¹	Nonpublic ²	Year	Total	Public ¹	Nonpublic ²
1960	3,585,824	2,770,824	815,000	1985	3,137,487	2,605,363	532,124
1961	3,679,536	2,856,168	823,368	1986	3,105,974	2,588,936	517,038
1962	3,808,568	2,960,568	848,000	1987	3,076,630	2,573,249	503,381
1963	3,912,006	3,051,006	861,000	1988	3,040,087	2,548,710	491,377
1964	3,994,717	3,121,717	873,000	1989	3,021,644	2,537,669	483,975
1965	4,060,574	3,176,574	884,000	1990	3,046,257	2,569,150	477,107
1966	4,140,025	3,248,879	891,146	1991	3,082,996	2,613,938	469,058
1967	4,209,588	3,325,477	884,111	1992	3,128,529	2,659,172	469,357
1968	4,270,130	3,397,413	872,717	1993	3,168,546	2,698,954	469,592
1969	4,283,224	3,442,809	840,415	1994	3,207,125	2,733,913	473,212
1970	4,294,156	3,506,303	787,853	1995	3,255,765	2,777,876	477,889
1971	4,276,347	3,523,034	753,313	1996	3,290,150	2,812,031	478,119
1972	4,213,247	3,494,805	718,442	1997	3,315,379	2,829,926	485,453
1973	4,131,885	3,453,332	678,553	1998	3,330,511	2,843,526	486,985
1974	4,068,685	3,424,873	643,812	1999	3,342,100	2,850,824	491,276
1975	4,027,360	3,406,015	621,345	2000	3,339,663	2,844,110	495,553
1976	3,934,761	3,328,551	606,210	2001	3,332,970	2,839,536	493,434
1977	3,800,107	3,211,849	588,258	2002	3,316,022	2,832,217	483,805
1978	3,667,673	3,083,800	583,873	2003	3,302,898	2,826,116	476,782
1979	3,538,910	2,958,725	580,185	2004	3,270,831	2,802,414	468,417
1980	3,440,235	2,860,371	579,864	2005	3,230,512	2,769,169	461,343
1981	3,347,079	2,770,640	576,439	2006	3,185,568	2,731,633	453,935
1982	3,275,873	2,705,413	570,460				
1983	3,225,450	2,661,041	564,409				
1984	3,178,916	2,631,059	547,857				

1 Includes public school districts and Boards of Cooperative Educational Services (BOCES).

2 Nonpublic enrollments for 1960-1970 are estimated.

SOURCE: New York State Education Department, Information and Reporting Services.

TABLE J-4

Fall Enrollment in Public Elementary and Secondary Schools¹ by Grade New York State — 1994-2006 (thousands)

Grade	1994	1995	1996	1997	1998	1999	2000	2001	2002	2003	2004	2005	2006
Total Fall Enrollment	2,734	2,778	2,812	2,829	2,843	2,850	2,844	2,840	2,832	2,826	2,802	2,769	2,731
--- Elementary Grades ---													
Total K-6	1,451	1,475	1,491	1,498	1,504	1,507	1,497	1,480	1,455	1,429	1,399	1,370	1,343
Kindergarten	212	216	211	206	203	199	195	190	188	188	186	187	183
1	225	231	235	229	226	222	218	212	207	202	201	197	197
2	212	219	223	228	223	220	216	213	206	201	196	194	191
3	206	209	215	219	225	222	218	216	212	205	200	194	191
4	202	203	206	210	215	219	218	214	211	207	200	194	190
5	196	200	201	204	208	214	218	216	214	211	206	200	194
6	197	197	201	202	204	211	214	219	217	215	210	204	197
--- Secondary Grades ---													
Total 7-12	1,136	1,153	1,167	1,176	1,183	1,190	1,199	1,218	1,238	1,264	1,280	1,276	1,267
7	197	200	200	203	205	207	214	218	222	221	219	212	207
8	191	194	197	197	200	202	204	212	215	219	218	215	209
9	227	235	242	245	249	253	246	246	251	258	263	256	248
10	203	205	207	215	213	213	218	219	220	226	229	233	231
11	173	175	174	169	167	165	166	169	172	176	184	186	194
12	144	143	147	147	149	150	151	154	158	164	167	174	178
Ungraded ²	147	150	154	155	156	153	148	142	139	133	123	123	121

NOTE: Detail may not add to totals due to rounding.

2 Students in special classes for the disabled.

1 Includes public school districts and Boards of Cooperative Educational Services (BOCES).

SOURCE: New York State Education Department, Information and Reporting Services.

TABLE J-5

**Fall Enrollment in Public Elementary and Secondary Schools
New York State by County — 1997-2006**

County	1997	1998	1999	2000	2001	2002	2003	2004	2005	2006
New York State	2,829,926	2,843,526	2,850,824	2,844,110	2,839,536	2,832,217	2,826,116	2,802,414	2,769,169	2,731,633
New York City	1,057,491	1,058,005	1,056,708	1,048,692	1,038,833	1,030,008	1,028,546a	1,017,956a	996,250a	978,416a
Bronx	218,426	219,184	220,364	219,141	217,636	216,496	211,932	209,460	206,378	208,855
Kings	345,669	343,747	340,718	336,531	331,179	326,193	315,335	310,291	302,446	302,072
New York	169,848	167,608	166,475	163,307	162,370	163,040	151,803	150,635	147,486	151,535
Queens	269,306	271,725	272,208	272,181	269,681	266,307	260,167	258,682	254,627	257,182
Richmond	54,242	55,741	56,943	57,532	57,967	57,972	56,899	56,282	55,915	57,240
Rest of State	1,772,435	1,785,521	1,794,116	1,795,418	1,800,703	1,802,209	1,797,570	1,784,458	1,772,919	1,753,217
BOCES ¹	21,342	21,053	20,928	20,508	20,872	19,884	19,680	18,896	17,977	16,680
Albany	40,544	40,978	40,820	40,657	40,640	40,427	40,735	40,166	39,874	39,086
Allegany	8,833	8,564	8,462	8,250	7,964	7,987	7,908	7,748	7,526	7,397
Broome	33,426	33,172	32,862	32,557	32,338	32,108	31,630	31,136	30,967	30,373
Cattaraugus	17,636	17,343	17,092	16,618	16,273	16,038	15,647	15,351	14,888	14,580
Cayuga	13,071	12,763	12,415	12,243	12,022	11,748	11,554	11,287	11,103	10,991
Chautauqua	25,398	25,031	24,422	23,872	23,576	23,195	22,905	22,426	21,956	21,364
Chemung	13,890	13,797	13,587	13,248	13,109	12,889	12,788	12,527	12,424	12,312
Chenango	10,304	10,195	10,143	9,806	9,690	9,573	9,491	9,340	9,255	9,064
Clinton	13,658	13,567	13,451	13,305	13,264	13,183	13,105	12,925	12,717	12,591
Columbia	10,159	10,129	10,054	9,914	9,791	9,620	9,468	9,284	9,227	8,715
Cortland	7,931	7,973	7,765	7,743	7,792	7,621	7,559	7,423	7,281	7,160
Delaware	7,924	7,709	7,561	7,430	7,300	7,155	6,936	6,881	6,728	6,439
Dutchess	43,819	44,509	45,200	45,671	46,337	46,980	47,223	47,417	47,505	47,156
Erie	142,007	142,273	141,832	141,205	139,830	138,031	135,294	131,957	129,618	128,804
Essex	5,040	5,004	5,053	4,997	4,947	4,909	4,784	4,586	4,491	4,352
Franklin	9,124	8,999	8,894	8,689	8,599	8,619	8,459	8,361	8,296	8,218
Fulton	9,918	9,717	9,749	9,516	9,448	9,349	9,288	9,251	9,186	9,143
Genesee	11,452	11,242	10,962	10,739	10,548	10,495	10,317	10,109	9,890	9,642
Greene	7,614	7,562	7,601	7,713	7,703	7,714	7,647	7,483	7,544	7,531
Hamilton	706	695	660	681	653	608	598	571	557	550
Herkimer	12,179	12,020	11,870	11,557	11,274	11,038	10,993	10,846	10,661	10,579
Jefferson	19,307	19,023	18,895	18,504	18,107	17,931	17,951	18,095	18,499	18,563
Lewis	5,221	5,111	5,059	4,999	4,847	4,765	4,598	4,553	4,580	4,460
Livingston	10,693	10,445	10,340	10,164	10,040	9,839	9,605	9,370	9,221	9,113
Madison	12,872	12,759	12,623	12,290	12,058	11,992	11,846	11,647	11,654	11,542
Monroe	121,903	122,377	122,511	120,556	120,081	119,325	118,555	116,784	116,968	115,893
Montgomery	8,079	8,072	7,945	7,894	7,892	7,852	7,867	7,842	7,780	7,752
Nassau	191,297	195,962	199,366	202,882	205,919	207,951	209,055	209,112	207,866	206,570
Niagara	36,588	36,182	35,775	35,326	35,047	34,695	34,185	33,471	33,026	32,219
Oneida	38,549	38,470	38,100	37,788	37,352	37,388	36,923	36,413	35,813	35,123
Onondaga	78,284	78,328	78,143	77,267	77,045	76,717	75,828	75,371	75,380	74,088
Ontario	18,233	18,183	18,153	18,178	18,078	18,023	17,812	17,605	17,567	17,451
Orange	59,938	60,786	61,862	62,956	64,055	65,393	65,977	65,834	65,905	65,642
Orleans	8,639	8,511	8,383	8,193	8,074	7,930	7,814	7,640	7,541	7,308
Otsego	25,892	25,815	25,718	25,329	25,017	24,692	24,399	23,858	23,569	23,214
Otsego	10,178	10,119	9,891	9,674	9,437	9,230	9,168	9,061	8,924	8,719
Putnam	14,651	15,018	15,497	15,747	16,422	16,839	16,945	16,973	16,903	16,724
Rensselaer	23,520	23,447	23,185	23,087	22,871	23,104	22,920	22,483	22,301	22,309
Rockland	39,390	40,131	40,330	40,571	41,233	41,854	42,052	42,104	41,750	41,770
St. Lawrence	18,929	18,715	18,364	17,684	17,275	16,901	16,610	16,258	16,208	16,117
Saratoga	34,551	34,794	34,879	34,780	35,027	35,087	35,228	35,419	35,623	35,754
Schenectady	21,977	21,977	22,150	22,218	22,341	22,154	22,815	22,805	22,926	22,953
Schoharie	5,777	5,779	5,686	5,570	5,406	5,432	5,405	5,322	5,266	5,111
Schuyler	2,384	2,373	2,458	2,438	2,314	2,260	2,247	2,213	2,124	2,137
Seneca	5,342	5,370	5,271	5,194	5,108	5,185	5,068	4,888	4,898	4,752
Steuben	19,257	19,173	19,175	18,881	18,823	18,395	18,242	17,935	17,668	17,234
Suffolk	231,418	236,760	242,952	248,850	254,179	258,227	260,997	262,268	262,172	258,844
Sullivan	11,335	11,181	11,272	11,149	11,253	11,353	11,255	11,104	10,855	10,641
Tioga	9,911	9,841	9,612	9,398	9,142	8,976	8,697	8,644	8,520	8,468
Tompkins	13,266	13,270	13,245	12,936	12,757	12,602	12,283	12,204	12,021	11,977
Ulster	28,300	28,592	28,495	28,698	28,567	28,566	28,288	28,205	27,667	27,011
Warren	11,298	11,279	11,340	11,288	11,206	11,205	11,092	11,062	10,824	10,582
Washington	10,848	10,850	10,735	10,806	10,673	10,553	10,397	10,277	10,099	9,779
Wayne	19,035	18,972	18,755	18,475	18,130	17,862	17,593	17,292	16,875	16,419
Westchester	130,311	134,331	137,536	139,904	142,321	144,132	145,503	146,252	146,587	146,483
Wyoming	6,097	6,027	5,917	5,808	5,641	5,625	5,421	5,231	5,104	4,988
Yates	3,190	3,203	3,115	3,017	2,995	2,963	2,920	2,892	2,864	2,780

a New York City total includes enrollment in city-wide programs.

SOURCE: New York State Education Department, Information and Reporting Services.

1 Boards of Cooperative Educational Services.

TABLE J-6

**Fall Enrollment in Nonpublic Elementary and Secondary Schools
New York State by County — 1997-2006**

County	1997	1998	1999	2000	2001	2002	2003	2004	2005	2006
New York State	485,453	486,968	491,276	495,553	493,434	483,805	476,710	468,517	461,283	453,935
New York City	268,913	269,325	272,051	275,144	275,626	270,320	267,705	265,562	262,800	260,626
Bronx	42,364	42,761	42,626	43,092	43,085	42,238	41,383	40,693	39,758	38,598
Kings	102,173	102,510	103,446	104,720	105,117	103,951	103,656	103,735	102,718	104,013
New York	45,725	46,153	47,040	48,207	48,288	46,059	46,727	46,958	48,439	48,019
Queens	58,810	57,881	58,793	58,916	58,956	58,081	56,293	54,539	52,803	51,169
Richmond	19,841	20,020	20,146	20,209	20,180	19,991	19,646	19,637	19,082	18,827
Rest of State	216,540	217,643	219,225	220,409	217,808	213,485	209,005	202,955	198,483	193,309
Albany	6,971	7,012	7,094	7,133	7,152	6,881	6,721	6,497	6,263	6,196
Allegany	361	399	479	437	461	462	434	412	399	404
Broome	2,763	2,985	2,703	2,590	2,348	2,086	1,932	1,752	1,647	1,513
Cattaraugus	874	900	872	955	957	813	751	768	731	645
Cayuga	846	800	798	793	740	731	631	577	544	555
Chautauqua	1,543	1,519	1,474	1,522	1,491	1,322	1,249	1,198	1,206	1,221
Chemung	1,697	1,747	1,629	1,618	1,622	1,504	1,414	1,313	1,198	1,121
Chenango	256	254	240	224	214	239	254	229	200	201
Clinton	1,672	1,636	1,511	1,406	1,278	1,123	1,033	939	874	751
Columbia	714	821	758	711	715	646	688	684	632	743
Cortland	573	590	473	457	474	471	439	395	395	364
Delaware	686	730	771	852	839	604	616	599	601	613
Dutchess	5,923	6,144	6,362	6,214	5,966	6,367	6,201	6,021	5,890	5,738
Erie	27,586	27,099	27,053	26,405	25,611	25,292	24,558	23,454	22,551	21,380
Essex	764	763	756	778	742	674	651	688	677	668
Franklin	587	506	468	465	494	441	429	390	365	363
Fulton	497	511	498	502	427	388	357	336	327	330
Genesee	997	1,009	1,042	1,073	975	919	874	808	777	671
Greene	1,270	1,281	1,266	1,242	1,145	1,264	1,235	1,278	1,163	1,084
Hamilton	—	—	—	—	—	—	—	—	—	—
Herkimer	251	249	276	284	289	285	266	266	237	173
Jefferson	1,535	1,526	1,483	1,438	1,413	1,357	1,161	1,084	974	953
Lewis	247	243	209	183	175	181	198	190	241	246
Livingston	220	239	247	246	236	268	257	270	209	198
Madison	457	256	235	251	234	225	241	254	244	249
Monroe	16,418	16,401	16,514	16,390	15,918	14,945	14,419	13,858	13,150	12,536
Montgomery	738	561	563	550	498	464	481	453	415	450
Nassau	35,881	36,439	37,006	37,151	37,343	37,219	36,861	36,088	35,620	34,759
Niagara	3,881	3,723	3,540	3,298	3,153	2,959	2,849	2,734	2,574	2,352
Oneida	2,772	2,683	2,734	2,730	2,580	2,247	2,033	1,992	1,947	1,799
Onondaga	8,026	8,206	8,358	8,356	8,172	7,783	7,380	6,931	6,622	6,010
Ontario	691	690	728	660	660	624	600	582	572	542
Orange	8,679	8,885	9,460	10,326	10,198	10,364	10,625	10,917	10,937	11,767
Orleans	161	144	171	181	182	170	166	116	90	101
Oswego	569	556	424	384	359	255	283	282	247	221
Otsego	427	402	399	425	417	426	405	330	297	274
Putnam	1,052	1,076	1,098	1,081	1,102	1,077	1,035	985	964	927
Rensselaer	3,520	3,317	3,291	3,262	3,277	3,040	2,972	2,781	2,715	2,635
Rockland	16,312	16,909	17,272	18,281	18,895	18,915	18,899	18,912	19,289	19,477
St. Lawrence	974	954	969	1,046	992	937	842	827	709	729
Saratoga	1,454	1,527	1,560	1,640	1,674	1,682	1,647	1,593	1,487	1,336
Schenectady	2,399	2,321	2,260	2,260	2,253	2,117	1,966	1,697	1,642	1,543
Schoharie	83	40	43	45	62	72	68	75	75	57
Schuyler	144	229	172	226	232	187	136	140	145	135
Seneca	392	378	410	523	574	647	619	449	406	381
Steuben	951	915	797	720	664	630	616	566	577	558
Suffolk	18,811	19,124	19,385	19,160	19,018	18,583	18,125	17,454	17,302	17,002
Sullivan	717	688	809	815	669	757	785	833	864	918
Tioga	266	262	238	204	193	185	183	184	168	152
Tompkins	805	774	733	791	721	715	702	629	641	629
Ulster	2,517	2,518	2,477	2,541	2,479	2,171	2,233	2,172	2,188	2,144
Warren	279	302	357	347	319	310	284	259	290	305
Washington	488	486	471	474	456	450	436	474	522	485
Wayne	468	457	444	390	386	385	340	287	238	217
Westchester	26,726	26,947	27,207	27,668	27,789	27,884	27,638	27,112	26,669	25,744
Wyoming	479	369	369	264	247	198	234	205	200	177
Yates	170	141	269	441	328	544	553	636	576	567

— Represents zero.

SOURCE: New York State Education Department, Information and Reporting Services.

TABLE J-7

**Fall Enrollment in Nonpublic Elementary and Secondary Schools by Affiliation
New York State — 2005 and 2006**

	Number of Nonpublic Schools		Enrollment							
			All Grades		K-6		7-8		9-12	
	2005	2006	2005	2006	2005	2006	2005	2006	2005	2006
All Affiliations	2,098	2,082	461,283	453,935	251,328	245,053	69,821	68,925	140,134	139,957
Roman Catholic	748	726	232,968	222,812	120,101	112,609	37,082	35,854	75,785	74,349
Jewish	369	372	112,782	117,002	68,361	71,072	15,804	16,115	28,617	29,815
Lutheran	55	52	6,783	6,297	4,376	3,957	1,301	1,215	1,106	1,125
Episcopal	19	19	5,085	4,991	2,882	2,806	813	807	1,390	1,378
Baptist	33	33	2,561	2,348	1,619	1,512	414	376	528	460
Other Religions ¹	292	293	27,816	27,180	17,705	17,080	4,788	4,688	5,323	5,412
Nondenominational	477	478	67,299	67,395	35,791	35,465	9,007	9,129	22,501	22,801
State/Public Agencies ²	105	109	5,989	5,910	493	552	612	741	4,884	4,617

1 Includes Society of Friends, Mennonite, Greek Orthodox, Russian Orthodox, Presbyterian, Seventh Day Adventist, Christian Fundamentalist, and Islamic schools.

2 Includes schools operated by the Office of Mental Health, Office of Mental Retardation and Developmental Disabilities, Department of

Correctional Services, Office of Children and Family Services, State University of New York, City University of New York, and State Education Department.

SOURCE: New York State Education Department, Information and Reporting Services.

TABLE J-8

**Professional Positions in Public Elementary and Secondary Schools by Type of Position
New York State — Selected Years 1945-2006**

Year	All Professional Positions ¹	Classroom Teachers	Other Professional Positions ²
1945	75,645	69,361	6,284
1950	85,689	77,812	7,877
1955	105,699	95,831	9,868
1960	135,915	118,883	17,032
1965	167,936	146,441	21,495
1970a	217,777	188,817	28,960
1971	213,544	185,325	28,219
1972	213,718	186,943	26,775
1973	215,887	187,956	27,931
1974	218,614	190,481	28,133
1975	210,631	182,772	27,859
1976	199,594	173,975	25,619
1977	203,138	175,879	27,259
1978	203,619	176,141	27,478
1979	201,811	172,803	29,008
1980	196,657	169,189	27,468
1981	195,726	168,516	27,210
1982	193,362	167,172	26,190
1983	196,637	168,944	27,693
1984	198,775	171,093	27,682
1985	203,376	175,256	28,120
1986	207,579	176,121	31,458
1987	213,087	176,910	36,177
1988	213,644	177,871	35,773
1989	215,128	183,293	31,835
1990	219,549	186,205	33,344
1991	212,236	180,274	31,962
1992	217,487	184,303	33,184
1993	223,423	188,846	34,577
1994	223,523	190,759	32,764
1995	229,335	197,591	31,744
1996	235,097	201,316	33,781
1997	238,141	206,365	31,776
1998	246,291	206,842	39,449
1999	257,804	216,452	41,352
2000	263,581	220,685	42,896
2001	268,056	224,644	43,412
2002	268,351	225,101	43,250
2003	266,900	224,061	42,839
2004	269,099	225,667	43,432
2005	270,773	226,418	44,355
2006	269,746	227,805	41,941

a Beginning in Fall 1970, staff of Boards of Cooperative Educational Services are included.

1 Counted annually in September; includes full-time and part-time positions.

2 Professional employees who spend more than 50 percent of their time at nonteaching duties.

SOURCE: New York State Education Department, Information and Reporting Services.

TABLE J-9

**Professional Positions in Public Elementary and Secondary Schools by Type of Position
New York State by County — 2004-06**

	All Professional Positions ¹			Classroom Teachers			Other Professionals ²		
	2004	2005	2006	2004	2005	2006	2004	2005	2006
New York State	269,099	270,773	269,746	225,667	226,418	227,805	43,432	44,355	41,941
New York City	94,214	94,996	92,724	75,935	75,971	76,636	18,279	19,025	16,088
Rest of State	174,885	175,777	177,022	149,732	150,447	151,169	25,153	25,330	25,853
BOCES ³	9,587	9,621	9,881	6,893	6,761	6,908	2,694	2,860	2,973
Albany	3,809	3,835	3,805	3,310	3,324	3,282	499	511	523
Allegany	803	806	839	698	697	718	105	109	121
Broome	3,059	3,074	3,043	2,669	2,672	2,625	390	402	418
Cattaraugus	1,517	1,541	1,513	1,312	1,329	1,320	205	212	193
Cayuga	1,076	1,066	1,063	932	931	926	144	135	137
Chautauqua	2,369	2,365	2,321	2,013	2,003	2,020	356	362	301
Chemung	1,162	1,167	1,165	971	976	977	191	191	188
Chenango	984	984	964	852	851	848	132	133	116
Clinton	1,303	1,292	1,292	1,125	1,113	1,124	178	179	168
Columbia	917	910	918	671	806	793	246	104	125
Cortland	752	736	739	652	628	640	100	108	99
Delaware	791	782	762	690	678	669	101	104	93
Dutchess	3,950	3,969	3,949	3,467	3,458	3,433	483	511	516
Erie	12,076	11,955	11,931	10,439	10,402	10,481	1,637	1,553	1,450
Essex	560	541	574	493	480	496	67	61	78
Franklin	843	845	886	730	730	776	113	115	110
Fulton	865	856	870	753	757	768	112	99	102
Genesee	1,011	998	986	881	873	864	130	125	122
Greene	745	767	766	665	666	656	80	101	110
Hamilton	125	121	123	110	106	108	15	15	15
Herkimer	1,033	1,052	1,025	926	931	901	107	121	124
Jefferson	1,569	1,552	1,556	1,389	1,365	1,366	180	187	190
Lewis	405	413	420	361	359	360	44	54	60
Livingston	981	976	979	840	840	840	141	136	139
Madison	1,063	1,065	1,083	947	946	957	116	119	126
Monroe	11,525	11,581	11,787	9,725	9,815	10,055	1,800	1,766	1,732
Montgomery	726	751	737	660	664	662	66	87	75
Nassau	20,325	20,512	20,630	17,356	17,602	17,655	2,969	2,910	2,975
Niagara	3,030	3,021	2,993	2,599	2,592	2,577	431	429	416
Oneida	3,155	3,225	3,261	2,721	2,810	2,835	434	415	426
Onondaga	6,995	7,140	7,266	6,119	6,197	6,330	876	943	936
Ontario	1,738	1,762	1,777	1,511	1,544	1,532	227	218	245
Orange	5,574	5,549	5,594	4,857	4,847	4,890	717	702	704
Orleans	687	689	706	600	601	604	87	88	102
Oswego	2,164	2,160	2,201	1,871	1,856	1,877	293	304	324
Otsego	931	936	958	822	813	811	109	123	147
Putnam	1,484	1,518	1,482	1,270	1,323	1,282	214	195	200
Rensselaer	2,067	2,059	2,289	1,853	1,829	2,000	214	230	289
Rockland	3,998	4,072	4,042	3,500	3,486	3,499	498	586	543
St. Lawrence	1,571	1,575	1,570	1,376	1,382	1,368	195	193	202
Saratoga	3,054	3,105	3,130	2,700	2,735	2,751	354	370	379
Schenectady	2,006	2,076	2,029	1,691	1,749	1,717	315	327	312
Schoharie	557	568	554	494	494	483	63	74	71
Schuyler	210	211	219	185	186	192	25	25	27
Seneca	506	487	498	435	424	435	71	63	63
Steuben	1,727	1,759	1,742	1,515	1,535	1,529	212	224	213
Suffolk	23,240	23,262	23,382	20,121	20,103	20,097	3,119	3,159	3,285
Sullivan	1,141	1,105	1,107	975	958	964	166	147	143
Tioga	777	763	759	680	666	663	97	97	96
Tompkins	1,340	1,329	1,376	1,136	1,158	1,161	204	171	215
Ulster	2,504	2,479	2,509	2,171	2,163	2,149	333	316	360
Warren	1,056	1,067	1,067	919	925	932	137	142	135
Washington	1,003	1,010	1,017	890	880	893	113	130	124
Wayne	1,792	1,757	1,790	1,556	1,527	1,526	236	230	264
Westchester	13,799	14,128	14,245	11,895	12,183	12,113	1,904	1,945	2,132
Wyoming	549	533	543	485	463	471	64	70	72
Yates	299	299	309	255	255	260	44	44	49

1 Counted annually in October; includes full-time and part-time positions.

2 Professional employees who spent more than 50 percent of their time at nonteaching duties.

3 Boards of Cooperative Educational Services.

SOURCE: New York State Education Department, Information and Reporting Services.

TABLE J-10

**Public High School Graduates
New York State by County — School Years 1996-97 — 2005-06**

	1996-97	1997-98	1998-99	1999-2000	2000-01	2001-02	2002-03	2003-04	2004-05	2005-06
New York State	137,189	138,396	141,253	143,469	141,854	140,129	143,719	153,137	153,087	161,615
New York City	37,145	37,716	39,561	40,793	39,552	37,948	36,751	43,074a	41,322	46,904
Bronx	5,330	5,504	5,493	5,805	5,259	5,442	5,305	6,258	5,989	7,132
Kings	11,788	11,749	12,543	12,250	12,184	11,437	10,901	11,983	11,629	13,163
New York	7,898	7,789	8,440	8,787	8,674	8,352	8,005	8,804	8,009	9,367
Queens	9,801	10,278	10,596	11,293	10,613	10,132	10,093	11,263	10,961	12,220
Richmond	2,328	2,396	2,489	2,658	2,822	2,585	2,447	2,708	2,797	3,102
Rest of State	100,044	100,680	101,692	102,676	102,302	102,181	106,968	110,063	111,765	114,711
Albany	2,409	2,225	2,347	2,430	2,451	2,540	2,413	2,575	2,616	2,444
Allegany	537	566	568	542	525	513	470	592	604	539
Broome	1,866	1,824	1,965	1,887	1,930	1,828	2,014	2,191	1,978	2,172
Cattaraugus	1,032	1,083	1,123	1,074	1,080	1,025	1,111	1,077	985	993
Cayuga	759	741	771	766	761	712	777	749	684	712
Chautauqua	1,543	1,615	1,643	1,584	1,467	1,521	1,531	1,546	1,562	1,523
Chemung	834	900	805	777	731	724	468	793	744	783
Chenango	628	659	589	653	641	598	641	617	730	617
Clinton	816	820	821	780	821	855	863	858	882	853
Columbia	509	513	500	517	447	484	554	565	607	593
Cortland	464	498	484	462	441	487	501	460	456	464
Delaware	520	527	493	533	501	424	428	490	469	532
Dutchess	2,251	2,370	2,411	2,370	2,495	2,518	2,695	2,928	2,680	3,077
Erie	7,999	8,219	7,921	8,223	7,684	8,214	8,578	8,600	8,679	8,474
Essex	339	305	311	354	322	251	319	382	347	343
Franklin	588	554	637	627	580	580	579	596	563	571
Fulton	560	631	570	584	560	582	552	523	521	606
Genesee	686	660	724	701	715	683	766	710	709	738
Greene	436	407	431	377	422	404	460	464	469	435
Hamilton	48	50	60	59	52	49	48	46	38	39
Herkimer	811	805	784	809	785	726	714	717	707	677
Jefferson	1,073	988	1,058	1,117	1,082	1,016	1,020	1,010	1,041	1,061
Lewis	362	355	362	368	354	321	355	339	309	357
Livingston	612	687	650	695	658	692	707	699	625	691
Madison	732	766	826	836	835	790	852	822	794	778
Monroe	5,950	6,083	6,471	6,463	6,502	6,753	6,551	7,333	7,260	7,456
Montgomery	445	374	461	482	474	265	510	546	454	488
Nassau	12,282	11,813	12,274	12,458	12,454	12,499	13,252	13,307	14,072	14,975
Niagara	2,136	2,255	2,124	2,207	2,109	2,070	2,094	2,286	2,216	2,284
Oneida	2,201	2,305	2,187	2,277	2,394	2,228	2,357	2,333	2,452	2,312
Onondaga	3,933	4,087	4,157	4,203	3,948	4,134	4,613	3,700	4,532	4,288
Ontario	1,002	1,022	1,012	1,059	1,095	1,130	1,128	1,315	1,177	1,205
Orange	3,201	3,174	3,320	3,398	3,482	3,405	3,761	3,993	4,156	4,274
Orleans	510	505	565	526	481	489	437	498	526	542
Oswego	1,564	1,506	1,415	1,486	1,492	1,387	1,514	1,478	1,471	1,414
Otsego	675	616	646	662	605	668	528	634	610	594
Putnam	799	818	794	829	906	887	952	1,103	1,109	1,249
Rensselaer	1,269	1,316	1,356	1,158	1,313	1,134	1,002	1,363	1,400	1,253
Rockland	2,724	2,639	2,646	2,539	2,607	2,565	2,711	2,776	2,714	2,772
St. Lawrence	1,226	1,225	1,211	1,203	1,143	1,109	1,095	1,100	1,059	1,055
Saratoga	2,017	2,046	2,016	2,129	2,087	2,114	2,214	2,285	2,241	2,274
Schenectady	1,129	1,162	1,192	1,156	1,217	1,268	1,289	1,292	1,280	1,394
Schoharie	353	365	344	356	376	338	398	349	381	330
Schuyler	166	179	158	168	175	158	121	146	145	132
Seneca	372	347	339	302	314	291	332	297	343	294
Steuben	1,221	1,267	1,250	1,170	1,159	1,144	1,071	1,182	1,221	1,242
Suffolk	13,508	13,545	13,514	13,780	13,941	13,974	15,018	15,579	15,975	16,744
Sullivan	675	603	616	520	580	598	644	628	666	654
Tioga	555	563	562	545	549	582	648	554	580	593
Tompkins	737	778	786	782	896	767	858	867	777	786
Ulster	1,466	1,554	1,562	1,542	1,545	1,623	1,734	1,718	1,705	1,846
Warren	657	655	672	633	677	624	694	714	716	759
Washington	663	604	621	598	581	641	634	660	707	705
Wayne	1,016	1,142	1,071	1,106	1,034	1,088	1,125	1,162	1,086	1,161
Westchester	6,616	6,754	6,879	7,211	7,240	7,087	7,643	7,979	8,361	8,972
Wyoming	360	421	424	392	407	413	434	354	382	370
Yates	202	189	193	211	179	211	190	183	192	222

a Includes City-Wide Programs.

SOURCE: New York State Education Department, Information and Reporting Services.

TABLE J-11

Nonpublic High School Graduates
New York State by County — School Years 1996-97 — 2005-06

	1996-97	1997-98	1998-99	1999-2000	2000-01	2001-02	2002-03	2003-04	2004-05	2005-06
New York State	24,740	25,951	25,869	25,721	20,846	21,373	21,280	21,773	22,010	21,323
New York City	14,478	14,931	14,746	14,458	11,931	11,992	11,507	11,411	12,068	11,443
Bronx	2,545	2,631	2,668	2,431	2,235	2,256	1,970	1,690	2,191	2,111
Kings	4,372	4,696	4,394	4,596	3,125	3,137	2,925	3,516	2,995	2,970
New York	2,925	3,010	3,072	2,876	2,097	2,268	2,102	1,865	2,144	2,177
Queens	3,343	3,289	3,280	3,176	3,069	3,097	3,148	3,015	3,213	2,730
Richmond	1,293	1,305	1,332	1,379	1,405	1,234	1,362	1,325	1,525	1,455
Rest of State	10,262	11,020	11,123	11,263	8,915	9,381	9,773	10,362	9,942	9,880
Albany	307	299	344	336	277	282	315	304	310	249
Allegany	30	25	33	32	34	34	38	45	29	32
Broome	144	151	113	118	102	111	146	96	135	113
Cattaraugus	34	39	35	15	21	22	3	3	10	22
Cayuga	16	22	17	26	31	25	23	16	21	11
Chautauqua	21	13	15	23	12	18	6	11	7	8
Chemung	109	111	106	102	96	113	90	118	111	89
Chenango	7	10	4	9	—	—	3	8	9	7
Clinton	76	96	88	80	68	55	51	56	50	52
Columbia	64	52	48	48	4	1	23	—	21	50
Cortland	16	17	7	2	9	—	2	1	8	—
Delaware	23	30	27	43	44	59	67	66	57	70
Dutchess	305	315	337	387	188	182	412	314	415	189
Erie	1,333	1,453	1,435	1,439	1,287	1,286	1,446	1,464	1,334	1,228
Essex	50	64	65	96	33	—	—	—	19	—
Franklin	4	3	6	—	—	—	—	—	—	—
Fulton	12	8	11	16	8	1	—	—	2	—
Genesee	46	49	30	54	74	45	60	52	59	46
Greene	—	1	2	3	—	7	—	1	8	8
Hamilton	—	—	—	—	—	—	—	—	—	—
Herkimer	1	—	1	1	1	1	—	3	1	1
Jefferson	63	85	81	75	57	80	83	65	83	84
Lewis	4	8	6	7	—	6	4	—	—	—
Livingston	—	—	—	—	—	—	—	—	—	—
Madison	2	5	1	1	5	3	9	6	12	13
Monroe	778	816	839	813	774	761	773	765	648	682
Montgomery	7	3	1	1	3	—	1	—	—	—
Nassau	2,185	2,372	2,426	2,418	2,109	2,456	2,405	2,497	2,464	2,561
Niagara	62	76	80	85	57	55	57	90	44	75
Oneida	120	147	130	140	137	134	110	94	102	118
Onondaga	366	357	356	411	400	436	433	451	369	441
Ontario	34	21	33	35	29	1	22	16	33	30
Orange	312	290	332	389	259	131	201	267	255	351
Orleans	5	2	5	1	—	—	—	1	1	4
Oswego	5	10	13	4	—	7	—	—	—	—
Otsego	6	3	8	5	5	—	5	3	5	—
Putnam	—	—	—	—	—	—	—	—	—	—
Rensselaer	310	317	306	311	226	277	298	297	308	279
Rockland	581	692	766	777	341	359	353	366	401	305
St. Lawrence	2	2	1	—	—	—	1	—	1	—
Saratoga	39	36	66	54	56	58	51	36	53	68
Schenectady	88	111	85	91	71	86	87	71	26	85
Schoharie	—	—	—	—	—	—	—	—	1	—
Schuyler	—	—	—	—	—	—	—	—	—	—
Seneca	—	1	—	4	—	5	4	6	4	4
Steuben	16	13	12	13	11	5	13	11	3	6
Suffolk	1,007	1,086	1,106	1,030	995	994	1,001	1,183	1,161	1,129
Sullivan	10	9	14	8	8	6	8	6	10	5
Tioga	2	5	8	5	—	3	—	3	5	1
Tompkins	11	17	15	10	—	—	—	1	1	—
Ulster	42	52	58	64	52	48	37	49	35	34
Warren	—	—	—	—	—	—	—	—	—	—
Washington	2	2	—	—	—	—	—	—	—	—
Wayne	—	—	—	—	—	—	—	—	—	—
Westchester	1,601	1,704	1,651	1,663	1,031	1,228	1,132	1,520	1,311	1,430
Wyoming	—	—	—	1	—	—	—	—	—	—
Yates	4	20	—	17	—	—	—	—	—	—

— Represents zero.

SOURCE: New York State Education Department, Information and Reporting Services.

TABLE J-12

**Public High School Graduates Entering Institutions of Higher Education
New York State — 1997-2006**

Location and Type of College	Proportion of College Enrollees to All High School Graduates									
	1997	1998	1999	2000	2001	2002	2003	2004	2005	2006
Within New York State										
Four-year degree-granting	38%	35%	35%	36%	37%	39%	39%	38%	38%	28%
Two-Year Degree-Granting	27	25	25	24	25	26	27	28	27	24
Other Postsecondary	1	1	1	1	1	1	1	1	1	1
Outside New York State										
Four-Year Degree-Granting	15	14	14	14	14	14	14	13	14	12
Two-Year Degree-Granting	1	1	1	1	1	1	1	1	1	1
Other Postsecondary	1	1	a	a	a	a	a	1	1	a

a Less than 1%.

SOURCE: New York State Education Department, Information and Reporting Services.

TABLE J-13

**Public High School Dropout Rate
New York State by County — School Years Ended 2000-06**

County	Dropout Rate ¹							County	Dropout Rate ¹						
	2000	2001	2002	2003	2004	2005	2006		2000	2001	2002	2003	2004	2005	2006
New York State	4.0%	3.8%	5.7%	4.6%	4.3%	4.3%	3.5%	Madison	1.8%	2.5%	2.3%	3.1%	2.3%	1.7%	1.7%
New York City ²	7.0	6.5	11.5	8.2	7.5	8.2	5.8	Monroe	2.1	3.1	2.5	3.6	3.2	2.8	3.3
Bronx	8.3	7.7	8.2	8.2	5.1	4.9	5.3	Montgomery	3.9	3.6	3.8	5.1	5.6	3.3	4.0
Kings	5.8	6.0	7.7	7.7	3.7	6.0	6.0	Nassau	0.9	1.0	1.7	1.3	1.8	1.3	1.2
New York	10.5	6.8	24.3	11.6	3.3	3.9	4.8	Niagara	3.3	1.5	3.1	1.6	2.1	2.0	1.8
Queens	5.1	6.4	8.4	7.1	4.1	5.3	6.0	Oneida	2.1	1.6	2.1	3.7	3.1	2.4	2.3
Richmond	3.1	2.3	5.0	3.8	2.1	2.8	3.9	Onondaga	2.6	2.4	2.9	2.2	2.7	3.4	3.1
Rest of State								Ontario	2.3	2.4	1.7	2.2	2.1	1.3	0.7
Albany	2.9	2.7	1.7	2.5	2.3	2.1	1.9	Orange	2.6	2.6	2.1	3.3	2.8	2.5	2.3
Allegany	2.6	3.7	3.6	2.8	2.3	2.3	2.4	Orleans	3.3	2.5	5.5	2.2	2.1	2.5	2.7
Broome	2.9	2.5	1.7	2.2	2.5	1.9	1.9	Oswego	3.6	3.3	4.7	2.6	4.4	3.4	3.5
Cattaraugus	3.7	3.0	3.6	3.6	3.9	3.7	3.2	Otsego	1.6	1.7	1.2	1.6	0.9	1.0	0.9
Cayuga	3.9	2.3	4.8	4.6	5.3	3.8	3.4	Putnam	1.5	0.9	0.7	0.6	1.1	1.0	0.7
Chautauqua	3.1	3.2	4.2	4.3	3.3	3.3	2.9	Rensselaer	2.4	2.6	2.6	1.3	1.7	1.9	2.2
Chemung	4.6	6.5	3.5	2.5	3.1	5.1	3.8	Rockland	1.5	1.7	2.8	2.3	1.6	1.8	1.6
Chenango	3.1	2.8	1.9	3.2	3.8	2.8	2.1	St. Lawrence	2.9	4.1	2.8	2.4	2.8	2.7	2.9
Clinton	4.5	4.3	3.7	3.6	2.8	3.0	2.3	Saratoga	2.8	2.4	1.0	1.6	2.2	2.1	2.0
Columbia	4.6	3.1	1.7	2.2	4.1	2.7	2.8	Schenectady	3.9	3.1	6.4	2.7	3.4	2.9	2.0
Cortland	3.5	2.5	3.0	1.9	2.5	2.4	2.6	Schoharie	2.7	3.3	2.1	2.0	2.2	2.8	2.9
Delaware	1.8	2.0	1.4	1.8	2.5	2.4	2.0	Schuyler	5.3	4.0	4.8	3.8	4.0	3.0	4.6
Dutchess	2.5	1.9	4.0	3.5	3.5	3.3	3.1	Seneca	3.8	4.6	3.2	3.0	4.9	3.2	1.6
Erie	1.9	1.6	3.4	4.0	2.7	3.3	3.3	Steuben	3.4	3.7	4.5	3.4	2.3	3.1	2.6
Essex	2.7	2.5	2.4	2.2	2.8	2.6	2.5	Suffolk	2.3	1.9	1.9	2.2	2.2	2.4	2.1
Franklin	4.0	3.1	1.1	2.2	2.2	2.1	2.8	Sullivan	3.3	3.6	2.7	3.4	3.8	4.1	3.9
Fulton	4.1	3.9	2.1	2.7	2.7	2.4	2.6	Tioga	2.8	2.9	2.8	2.8	3.9	2.6	2.9
Genesee	2.2	1.9	1.2	2.2	2.5	1.4	1.3	Tompkins	3.7	2.0	1.3	3.4	3.3	2.6	2.3
Greene	3.4	2.3	2.0	3.7	2.7	2.9	3.3	Ulster	2.8	3.5	3.6	3.5	3.8	3.8	3.9
Hamilton	1.8	1.8	3.4	—	0.6	0.6	0.6	Warren	2.3	2.5	2.3	2.1	2.0	1.7	1.3
Herkimer	3.2	3.1	3.5	5.0	3.5	2.9	2.4	Washington	2.4	3.0	1.9	1.9	2.2	2.0	1.2
Jefferson	2.4	2.5	2.7	2.8	2.6	2.8	2.5	Wayne	3.6	3.8	2.3	2.6	3.6	2.8	1.9
Lewis	1.4	2.0	2.1	2.9	2.0	2.0	1.4	Westchester	1.2	1.3	2.1	1.4	1.8	1.7	1.4
Livingston	3.7	2.5	2.2	2.8	2.2	1.8	1.5	Wyoming	2.5	2.5	2.2	1.9	1.9	1.5	2.0
								Yates	2.4	2.4	2.8	2.2	2.3	3.2	1.6

— Represents zero.

SOURCE: New York State Education Department, Information and Reporting Services.

1 The percent of students in grades 9-12 who leave a school during the academic year and do not enroll in another school.

2 The New York City dropout rate includes dropouts from city-wide programs who are not allocated to specific counties.

TABLE J-14

**Educational Attainment of Residents Age 25 and Over by Race and Spanish Origin
New York State — 2000**

	Elementary (0 to 8 Years)	High School (1 to 4 Years) No Diploma	High School Diploma	Some College, No Degree	Associate Degree	Bachelor's Degree	Graduate or Professional Degree
All Races	1,005,805	1,620,519	3,480,768	2,103,404	898,828	1,954,242	1,478,970
White Alone	515,028	915,826	2,587,448	1,516,580	680,557	1,513,361	1,208,843
Black or African American Alone	140,771	383,322	502,786	350,513	124,679	179,782	102,933
American Indian and Alaska Native Alone	6,388	9,008	12,650	7,831	3,321	3,973	2,601
Asian Alone	103,009	81,919	118,525	68,690	34,598	172,118	114,643
Native Hawaiian and Other Pacific Islander Alone	571	758	1,356	643	326	540	373
Some Other Race Alone	187,612	171,043	171,249	104,097	34,930	42,959	23,612
Two or More Races	52,426	58,643	86,754	55,050	20,417	41,509	25,965
Hispanic or Latino ¹	377,392	354,354	384,628	245,172	78,684	113,026	73,857

1 Persons of Hispanic or Latino origin may be of any race and are tabulated in the racial categories.

SOURCE: United States Bureau of the Census, 2000 Census of Population and Housing; material compiled by Empire State Development, State Data Center.

TABLE J-15

**Degree-Credit Fall Enrollment in Institutions of Higher Education by Sector
New York State — 1999-2007**

Sector	1999(r)	2000(r)	2001(r)	2002	2003	2004	2005	2006	2007
All Sectors ¹	1,016,858	1,025,756	1,055,358	1,097,015	1,111,310	1,128,847	1,142,727	1,153,406	1,169,951
Full-time	682,802	691,595	715,995	753,314	772,912	789,491	800,412	809,526	826,520
Part-time	334,056	334,161	339,363	343,701	338,398	339,356	342,315	343,880	343,431
Independent	415,220	417,179	426,302	439,561	442,319	448,337	458,785	462,250	462,588
Full-time	301,242	305,981	314,251	326,301	332,720	338,578	345,346	347,140	351,607
Part-time	113,978	111,198	112,051	113,260	109,599	109,759	113,439	115,110	110,981
Proprietary	35,330	38,674	43,669	45,647	46,394	48,763	49,255	46,920	46,955
Full-time	27,592	31,298	36,408	38,864	40,919	42,673	42,629	39,791	39,190
Part-time	7,738	7,376	7,261	6,783	5,475	6,090	6,626	7,129	7,765
State University	372,433	374,467	388,256	402,945	409,886	413,611	414,201	418,290	427,398
Full-time	242,385	244,107	253,921	269,828	277,676	282,179	284,694	290,688	298,038
Part-time	130,048	130,360	134,335	133,117	132,210	131,432	129,507	127,602	129,360
City University	193,875	195,436	197,131	208,862	212,711	218,136	220,486	225,946	233,010
Full-time	111,583	110,209	111,415	118,321	121,597	126,061	127,743	131,907	137,685
Part-time	82,292	85,227	85,716	90,541	91,114	92,075	92,743	94,039	95,325

r Revised.

SOURCE: New York State Education Department, Office of Research and Information Systems.

1 Includes students enrolled in courses that carry credit toward a certificate or associate, bachelor's, or higher degree.

TABLE J-16

**Degree-Credit Fall Enrollment and First-Time Students
in Institutions of Higher Education by Level of Program and Institutional Classification
New York State — 2007**

Institutional Classification	Degree-Credit Enrollment									
	All Students ¹		Undergraduate		First-Professional		Graduate		First-Time Students	
	Full-Time	Part-Time	Full-Time	Part-Time	Full-Time	Part-Time	Full-Time	Part-Time	Full-Time	Part-Time
All Institutions	826,520	343,431	702,592	236,112	30,148	3,088	93,780	104,231	177,917	22,117
Public Institutions	435,723	224,685	404,387	185,996	5,078	14	26,258	38,675	104,027	15,535
State University of New York, All Campuses	298,038	129,360	275,058	111,760	4,666	6	18,314	17,594	73,425	12,906
University Centers	69,599	13,921	54,857	3,704	2,628	6	12,114	10,211	10,898	344
University Colleges	70,897	19,997	67,311	13,915	X	X	3,586	6,082	12,628	837
Health Sciences Centers	2,206	665	359	214	1,410	—	437	451	—	—
Specialized Colleges	4,906	2,009	4,072	1,250	292	—	542	759	822	4
Statutory Colleges	7,774	180	5,926	168	336	—	1,512	12	1,213	20
Agricultural-Technical	17,175	3,940	17,175	3,940	X	X	X	X	5,971	653
Community Colleges	125,481	88,648	125,358	88,569	X	X	123	79	41,893	11,048
City University of New York, All Campuses	137,685	95,325	129,329	74,236	412	8	7,944	21,081	30,602	2,629
Graduate Centers	4,715	1,223	113	631	412	8	4,190	584	X	50
Senior Colleges	90,203	60,005	86,449	39,508	X	X	3,754	20,497	18,451	795
Community Colleges	42,767	34,097	42,767	34,097	X	X	X	X	12,151	1,784
Independent Institutions ¹	351,607	110,981	260,267	42,967	25,070	3,074	66,270	64,940	63,215	5,491
Multiversities	89,437	19,431	52,140	4,842	7,910	29	29,387	14,560	12,482	85
Universities	57,588	24,594	41,953	8,754	6,557	997	9,078	14,843	10,461	2,470
College Complexes	72,539	16,535	64,426	6,021	762	344	7,351	10,170	16,661	521
Colleges	72,899	34,243	63,510	16,439	1,172	535	8,217	17,269	14,193	1,609
Specialized Colleges	12,652	5,428	4,993	1,331	3,033	742	4,626	3,355	1,116	137
Health Sciences Centers	5,398	534	1,039	26	3,312	7	1,047	501	264	—
Engineering-Technical	35,506	6,261	28,205	2,741	1,246	X	6,055	3,520	6,764	502
Seminaries	1,788	1,169	201	27	1,078	420	509	722	42	6
Nursing Two-Year	993	1,550	993	1,550	X	X	X	X	113	34
Other Two-Year	2,807	1,236	2,807	1,236	X	X	X	X	1,119	127
Proprietary Institutions	39,190	7,765	37,938	7,149	X	X	1,252	616	10,675	1,091
--- Summary by Program Level ---										
All Institutions	826,520	343,431	702,592	236,112	30,148	3,088	93,780	104,231	177,917	22,117
Two-Year	184,454	125,678	184,454	125,678	X	X	X	X	60,374	13,149
Four-Year and Higher	642,066	217,753	518,138	110,434	30,148	3,088	93,780	104,231	117,543	8,968
Public Institutions	435,723	224,685	404,387	185,996	5,078	14	26,258	38,675	104,027	15,535
State University of New York, All Campuses	298,038	129,360	275,058	111,760	4,666	6	18,314	17,594	73,425	12,906
Two-Year	118,611	85,580	118,611	85,580	X	X	X	X	40,805	10,763
Four-Year and Higher	179,427	43,780	156,447	26,180	4,666	6	18,314	17,594	32,620	2,143
City University of New York, All Campuses	137,685	95,325	129,329	74,236	412	8	7,944	21,081	30,602	2,629
Two-Year	42,767	34,097	42,767	34,097	X	X	X	X	12,151	1,784
Four-Year and Higher	94,918	61,228	86,562	40,139	412	8	7,944	21,081	18,451	845
Independent Institutions	351,607	110,981	260,267	42,967	25,070	3,074	66,270	64,940	63,215	5,491
Two-Year	3,800	2,786	3,800	2,786	X	X	X	X	1,232	161
Four-Year and Higher	347,807	108,195	256,467	40,181	25,070	3,074	66,270	64,940	61,983	5,330
Proprietary Institutions	39,190	7,765	37,938	7,149	X	X	1,252	616	10,675	1,091
Two-Year	19,276	3,215	19,276	3,215	X	X	X	X	6,186	441
Four-Year and Higher	19,914	4,550	18,662	3,934	X	X	1,252	616	4,489	650

— Represents zero.

X Not applicable.

1 Undergraduate and graduate students enrolled at Excelsior College are not included in this table.

SOURCE: New York State Education Department, Office of Research and Information Systems, Form NYSED-2.4, Fall Enrollment Survey 2007.

TABLE J-17

**Degrees Granted by Institutions of Higher Education
by Level of Degree and by Sector
New York State — Selected Academic Years 1994-95 — 2005-06**

Level of Degree and Sector	1994-95	1995-96	1996-97	2000-01(r)	2001-02	2002-03	2003-04	2004-05	2005-06
Associate									
All Sectors	54,142	53,304	53,862	51,627	53,103	54,249	55,756	59,264	60,054
SUNY	32,454	30,916	30,671	28,675	29,264	28,291	29,612	30,959	31,306
CUNY	8,193	8,614	9,305	8,502	8,142	8,846	8,851	9,641	9,567
Independent	8,507	8,660	8,487	7,922	7,766	8,020	8,105	8,515	9,055
Proprietary	4,988	5,114	5,399	6,528	7,931	9,092	9,188	10,149	10,126
Public-Special	X	X	X	X	X	X	X	X	X
Bachelor's									
All Sectors	92,690	94,262	94,088	97,262	102,355	100,044	106,945	112,548	117,700
SUNY	29,306	29,507	29,013	28,708	27,247	27,292	29,339	28,690	31,776
CUNY	12,141	12,448	13,607	13,533	14,112	13,856	14,607	15,981	16,287
Independent	50,792	51,812	50,911	53,717	59,175	56,543	60,726	65,147	66,788
Proprietary	451	495	557	1,304	1,821	2,353	2,273	2,730	2,849
Public-Special	X	X	X	X	X	X	X	X	X
First-Professional									
All Sectors	7,587	7,654	7,599	7,284	8,398	8,582	8,107	8,526	8,604
SUNY	1,034	1,138	1,088	1,105	1,152	1,177	1,097	975	1,124
CUNY	137	144	146	96	127	131	131	144	131
Independent	6,416	6,372	6,365	6,083	7,119	7,274	6,879	7,407	7,349
Proprietary	X	X	X	X	X	X	X	X	X
Public-Special	X	X	X	X	X	X	X	X	X
Master's									
All Sectors	44,636	45,354	45,820	48,521	51,138	55,878	58,148	59,624	64,113
SUNY	8,133	8,042	8,167	8,007	7,528	9,645	9,917	9,186	10,217
CUNY	5,440	5,606	5,279	5,899	5,883	6,356	6,401	6,960	7,262
Independent	30,956	31,588	32,281	34,461	37,439	39,535	41,488	43,055	46,231
Proprietary	107	118	93	154	288	342	342	423	403
Public-Special	X	X	X	X	X	X	X	X	X
Doctoral									
All Sectors	3,945	3,935	3,854	3,606	3,459	3,595	3,728	4,053	4,505
SUNY	1,082	1,103	1,038	969	737	823	858	753	1,057
CUNY	294	302	310	250	271	272	272	298	330
Independent	2,569	2,530	2,506	2,387	2,451	2,500	2,598	3,002	3,118
Proprietary	X	X	X	X	X	X	X	X	X
Public-Special	X	X	X	X	X	X	X	X	X

r Revised.

X Not applicable.

SOURCE: New York State Education Department, Office of Research and Information Systems.

TABLE J-18

Scholarships and Awards
New York State — Academic Years 2002-03 — 2006-07

	2002-03(r)	2003-04(r)	2004-05(r)	2005-06	2006-07(e)
All Scholarships and Awards	43,885	43,810	44,150	42,483	44,184
Scholarships	20,837	20,886	20,856	19,948	19,404
Memorial Scholarships for Families of Deceased Firefighters, Police Officers, Peace Officers, and Emergency Medical Service Workers	68	85	81	80	70
Regents Health Care Opportunity Scholarships	107	94	66	42	39
Primary Care Service Corps ¹	2	—	—	—	—
Regents Professional Opportunity Scholarships	558	574	496	391	419
Robert C. Byrd Honors ²	1,646	1,679	1,667	1,592	1,511
World Trade Center Memorial Scholarships	139	169	200	206	286
Volunteer Recruitment Service Scholarships	481	608	607	590	571
Scholarship for Academic Excellence	17,836	17,677	17,735	16,992	16,459
Military Service Recognition Scholarship	—	—	4	9	9
Senator Patricia K. McGee Nursing Faculty Scholarship	—	—	—	31	28
Flight 587 Memorial Scholarship	—	—	—	15	12
Awards	23,048	22,924	23,294	22,535	24,780
Aid for Part-Time Study ³	21,822	21,775	22,071	21,048	22,748
Regents Awards for Children of Deceased and Disabled Veterans	558	538	525	411	388
Regents Physicians Loan Forgiveness Program	108	113	80	80	80
State Loan Repayment ⁴	46	50	—	—	—
Vietnam/Persian Gulf Veterans Tuition Awards	514	448	618	836	938
Loan Forgiveness for Nursing Faculty	—	—	—	19	30
New York State Licensed Social Worker Loan Forgiveness Program	—	—	—	141	140
District Attorney Loan Forgiveness Program	—	—	—	—	456
- - - Payments (thousands) - - -					
All Scholarships and Award Payments	\$ 36,851	\$ 37,708	\$ 37,262	\$ 38,434	\$ 41,180
Scholarships	\$ 21,183	\$ 22,226	\$ 22,372	\$ 22,562	\$ 23,295
Memorial Scholarships for Families of Deceased Firefighters, Police Officers, Peace Officers, and Emergency Medical Service Workers	698	925	955	982	962
Regents Health Care Opportunity Scholarships	1,070	925	650	415	380
Primary Care Service Corps ¹	11	—	—	—	—
Regents Professional Opportunity Scholarships	1,967	2,039	1,805	1,498	1,653
Robert C. Byrd Honors Scholarships ²	2,425	2,469	2,479	2,361	2,246
World Trade Center Memorial Scholarship	1,129	1,663	2,167	2,514	3,607
Volunteer Recruitment Service Scholarships	1,129	1,610	1,667	1,781	1,752
Scholarship for Academic Excellence	12,754	12,595	12,611	12,415	12,093
Military Service Recognition Scholarship	—	—	38	77	101
Senator Patricia K. McGee Nursing Faculty Scholarship	—	—	—	372	387
Flight 587 Memorial Scholarship	—	—	—	147	114
Awards	\$ 15,668	\$ 15,482	\$ 14,890	\$ 15,872	\$ 17,885
Aid for Part-Time Study ³	12,910	12,743	13,018	12,447	12,504
Regents Awards for Children of Deceased and Disabled Veterans	219	211	209	180	165
Regents Physician Loan Forgiveness Program	1,080	1,130	800	800	800
State Loan Repayment ⁴	780	800	—	—	—
Vietnam/Persian Gulf Veterans Tuition Awards	679	598	863	1,484	1,802
Loan Forgiveness for Nursing Faculty	—	—	—	158	187
New York State Licensed Social Worker Loan Forgiveness Program	—	—	—	803	886
District Attorney Loan Forgiveness Program	—	—	—	—	1,541

— Represents zero.

r Revised.

e Estimated.

1 Discontinued in 1999-2000.

2 100 percent federally funded program.

3 Total award amounts include schools' tuition liability.

4 50 percent federally funded and 50 percent state-funded programs.

SOURCE: New York State Higher Education Services Corporation, *2006-07 Annual Report*; [www.hesc.com/content.ns/HESC/HESC_News/\\$file/2006_2007AnnualReportNS2.pdf](http://www.hesc.com/content.ns/HESC/HESC_News/$file/2006_2007AnnualReportNS2.pdf) (last viewed November 16, 2007).

TABLE J-19

Student Tuition Assistance Program Recipients and Expenditures by Level of Study¹
New York State — Fiscal Years 2002-03 — 2006-07

Level of Study	2002-03	2003-04	2004-05(r)	2005-06	2006-07
--- Annual Average Recipients (FTE ²) ---					
Total	312,547	328,094	335,513	330,392	320,930
Undergraduate	305,374	320,440	327,436	322,339	312,580
Graduate	7,173	7,654	8,077	8,053	8,350
Percent Change from Prior Year	4.6%	5.0%	2.3%	-1.5%	-2.9%
--- Annual Expenditures (thousands) ---					
Total	\$ 726,473	\$ 845,466	\$ 874,430	\$ 862,844	\$ 831,190
Undergraduate	723,780	842,554	871,337	859,668	827,920
Graduate	2,693	2,912	3,093	3,173	3,270
Percent Change from Prior Year	7.9%	16.4%	3.4%	-1.3%	-3.7%
--- Annual Expenditures Per Annual Average Recipient ---					
Total	\$ 2,324	\$ 2,577	\$ 2,606	\$ 2,612	\$ 2,590
Undergraduate	2,370	2,629	2,661	2,667	2,649
Graduate	375	380	383	394	392
Percent Change from Prior Year	3.1%	10.9%	1.1%	0.2%	-0.8%

r Revised.

1 Data are as of August 31, 2007.

2 Full-Time Equivalents.

SOURCE: New York State Higher Education Services Corporation, *2006-07 Annual Report*; [www.hesc.com/content.nsf/HESC/HESC_News/\\$file/2006_2007AnnualReportNS2.pdf](http://www.hesc.com/content.nsf/HESC/HESC_News/$file/2006_2007AnnualReportNS2.pdf) (last viewed November 16, 2007).

TABLE J-20

Tuition Assistance Program Recipients
by Level of Study and Type of Institution¹
New York State — Academic Years 2002-03 — 2006-07

	Average Annual Recipients (FTE)				
	2002-03(r)	2003-04(r)	2004-05(r)	2005-06	2006-07(e)
All Recipients	312,547	328,094	335,513	330,393	320,930
Undergraduate	305,374	320,440	327,436	322,339	312,580
City University of New York	55,965	62,025	64,544	65,130	63,240
Senior Colleges	36,770	41,463	43,413	44,511	44,050
Community Colleges	19,195	20,562	21,131	20,619	19,190
State University of New York	118,810	124,675	128,134	126,862	125,630
State Operated	70,071	72,308	72,987	73,061	72,190
Community Colleges	48,739	52,367	55,147	53,801	53,440
Independent Colleges	95,148	96,263	94,330	91,835	89,560
Proprietary Degree-Granting Institutions	30,908	33,561	37,060	35,401	31,340
Nondegree Business Schools	3,815	3,161	2,636	2,402	2,060
All Others	728	755	732	709	750
Graduate	7,173	7,654	8,077	8,054	8,350
City University of New York	462	569	616	611	550
State University of New York	2,785	2,897	2,882	2,893	2,810
Independent Colleges	3,926	4,188	4,579	4,550	4,990

r Revised.

e Estimated.

1 Data are as of August 31, 2007.

SOURCE: New York State Higher Education Services Corporation, *2006-07 Annual Report*; [www.hesc.com/content.nsf/HESC/HESC_News/\\$file/2006_2007AnnualReportNS2.pdf](http://www.hesc.com/content.nsf/HESC/HESC_News/$file/2006_2007AnnualReportNS2.pdf) (last viewed November 9, 2007).

TABLE J-21

Tuition Assistance Program Expenditures¹
by Level of Study and Type of Institution
New York State — Academic Years 2002-03 — 2006-07
(thousands)

	2002-03(r)	2003-04(r)	2004-05(r)	2005-06	2006-07(e)
All Expenditures	\$ 726,473	\$ 845,466	\$ 874,430	\$ 862,844	\$ 831,190
Undergraduate	723,780	842,554	871,337	859,668	827,920
City University of New York	128,611	171,807	179,408	179,595	173,540
Senior Colleges	88,783	124,137	130,545	132,118	129,960
Community Colleges	39,828	47,670	48,863	47,477	43,580
State University of New York	195,558	247,336	260,078	262,928	263,000
State Operated	121,825	162,815	166,339	166,416	164,730
Community Colleges	73,733	84,521	93,739	96,512	98,270
Independent Colleges	261,835	274,251	270,887	262,768	256,010
Other Degree-Granting Institutions	119,134	132,947	147,406	141,799	124,270
Nondegree Business Schools	16,861	14,304	11,696	10,750	9,180
All Other Institutions	1,781	1,909	1,862	1,828	1,920
Graduate	2,693	2,912	3,093	3,176	3,270
City University of New York	180	212	247	243	220
State University of New York	1,057	1,126	1,110	1,138	1,140
Independent Colleges	1,456	1,574	1,736	1,795	1,910

r Revised.

e Estimated.

1 Data are as of August 31, 2007.

SOURCE: New York State Higher Education Services Corporation, *2006-07 Annual Report*; [www.hesc.com/content.nsf/HESC/HESC_News/\\$file/2006_2007AnnualReportNS2.pdf](http://www.hesc.com/content.nsf/HESC/HESC_News/$file/2006_2007AnnualReportNS2.pdf) (last viewed November 9, 2007).

TABLE J-22

Student Aid for Part-Time Study (APTS) Program Recipients
New York State — Academic Years 2002-03 — 2006-07

Type of Institution	2002-03	2003-04	2004-05	2005-06	2006-07
Total	21,822	21,775	22,071	21,048	22,748
City University of New York (CUNY)	11,300	11,418	11,970	11,212	13,640
4-Year	6,852	6,543	6,558	6,405	7,869
2-Year	4,448	4,875	5,412	4,807	5,771
State University of New York (SUNY)	7,881	7,878	7,563	7,396	6,671
4-Year	1,176	1,155	1,096	1,080	910
2-Year	6,705	6,723	6,467	6,316	5,761
Independent Colleges	2,358	2,163	2,243	2,091	2,051
Degree Proprietary	283	316	295	349	386

SOURCE: New York State Higher Education Services Corporation, *2006-07 Annual Report*; [www.hesc.com/content.nsf/HESC/HESC_News/\\$file/2006_2007AnnualReportNS2.pdf](http://www.hesc.com/content.nsf/HESC/HESC_News/$file/2006_2007AnnualReportNS2.pdf) (last viewed November 9, 2007).

TABLE J-23

**Amount of Student Loans, Grants, and Scholarships Administered by HESC¹
New York State — 2002-03 — 2006-07**

	2002-03	2003-04	2004-05(r)	2005-06	2006-07
Total	\$ 6,204,473	\$ 5,842,536	\$ 7,010,279	\$ 8,343,140	\$ 5,467,512
Percent Change from Prior Year	55.1%	-5.8%	20.0%	19.0%	-34.5%
--- State Fiscal Year (thousands) ---					
Total Loans	\$ 5,441,149	\$ 4,959,362	\$ 6,098,587	\$ 7,441,862	\$ 4,595,142
Federal Consolidation Loans ²	3,244,893	2,531,563	3,545,106	4,734,088	1,626,774
Federal PLUS Loans ³	325,101	408,478	465,490	569,451	685,798
Federal Stafford Loans ³	1,019,020	1,101,414	1,128,593	1,134,971	1,226,648
Unsubscribed Federal Stafford Loans	852,135	917,907	959,398	1,003,352	1,055,922
Percent Change from Prior Year	65.2%	-8.9%	23.0%	22.0%	-38.3%
--- Academic Year (thousands) ---					
Total Grants and Scholarships	\$ 763,324	\$ 883,174	\$ 911,692	\$ 901,278	\$ 872,370
Tuition Assistance	726,473	845,466	874,430	862,844	831,190
Other Grants and Scholarships	36,851	37,708	37,262	38,434	41,180
Percent Change from Prior Year	8.0%	15.7%	3.2%	-1.1%	-3.2%

r Revised.

1 NYS Higher Education Services Corporation. Loan data are as of March 31, 2007; grant and scholarship data are as of August 31, 2007.

2 Consolidation guaranteed amount includes loan adjustments and is net of cancellations.

3 Stafford and Parent Loan for Undergraduate Students (PLUS) loan guaranteed amounts exclude adjustments and cancellations.

SOURCE: New York State Higher Education Services Corporation, *2006-07 Annual Report*; [www.hesc.com/content.nsf/HESC/HESC_News/\\$file/2006_2007AnnualReportNS2.pdf](http://www.hesc.com/content.nsf/HESC/HESC_News/$file/2006_2007AnnualReportNS2.pdf) (last viewed November 16, 2007).

TABLE J-24

**Applications Received and Processed by HESC¹ for Loans, Grants, and Scholarships
New York State — Academic Years 2002-03 — 2006-07**

	2002-03	2003-04	2004-05	2005-06	2006-07
Grants and Scholarships Total	572,016	606,620	622,000	613,000	610,000
Percent Change from Prior Year	3.5%	6.0%	2.5%	-1.4%	-0.5%
Loans Received and Processed	591,400	613,000	704,000	742,000	657,000
Federal Consolidation Loans	100,000	87,000	157,000	190,000	75,000
Federal PLUS ² Loans	32,000	37,100	41,000	47,000	52,000
Federal Stafford Loans ³	459,400	488,900	506,000	505,000	530,000
Percent Change from Prior Year	17.3%	3.7%	14.8%	5.4%	-11.5%

1 New York State Higher Education Services Corporation.

2 Parent Loan for Undergraduate Students.

3 Includes Subsidized and Unsubsidized Federal Stafford Loans.

SOURCE: New York State Higher Education Services Corporation, *2006-07 Annual Report*; [www.hesc.com/content.nsf/HESC/HESC_News/\\$file/2006_2007AnnualReportNS2.pdf](http://www.hesc.com/content.nsf/HESC/HESC_News/$file/2006_2007AnnualReportNS2.pdf) (last viewed November 16, 2007).

TABLE J-25

**Loans Guaranteed for Educational Purposes
New York State — Fiscal Years 2002-03 — 2006-07**

Type of Loan	2002-03	2003-04	2004-05	2005-06	2006-07
All Loans	609,351	621,837	673,465	741,504	655,116
Percent Change	22.9%	2.0%	8.3%	10.1%	-11.7%
Federal Consolidation Loans	116,548	90,328	136,869	189,671	74,514
Percent Change	153.5%	-22.5%	51.5%	38.6%	-60.7%
Federal PLUS ¹ Loans	32,038	36,809	40,580	47,035	51,901
Percent Change	11.1%	14.9%	10.2%	15.9%	10.3%
Federal Stafford Loans	272,802	290,928	290,085	290,553	309,977
Percent Change	8.5%	6.6%	-0.3%	0.2%	6.7%
Unsubsidized Federal Stafford Loans	187,963	203,772	205,931	214,245	218,724
Percent Change	10.8%	8.4%	1.1%	4.0%	2.1%
--- thousands ---					
All Loans	\$ 5,441,149	\$ 4,959,362	\$ 6,098,587	\$ 7,441,862	\$ 4,595,142
Percent Change	65.2%	-8.9%	23.0%	22.0%	-38.3%
Federal Consolidation Loans	\$ 3,244,893	\$ 2,531,563	\$ 3,545,106	\$ 4,734,088	\$ 1,626,774
Percent Change	145.7%	-22.0%	40.0%	33.5%	-65.6%
Federal PLUS ¹ Loans	\$ 325,101	\$ 408,478	\$ 465,490	\$ 569,451	\$ 685,795
Percent Change	17.9%	25.6%	14.0%	22.3%	20.4%
Federal Stafford Loans	\$ 1,019,020	\$ 1,101,414	\$ 1,128,593	\$ 1,134,971	\$ 1,226,648
Percent Change	9.2%	8.1%	2.5%	0.6%	8.1%
Unsubsidized Federal Stafford Loans	\$ 852,135	\$ 917,907	\$ 959,398	\$ 1,003,352	\$ 1,055,922
Percent Change	11.5%	7.7%	4.5%	4.6%	5.2%

1 Parent Loan for Undergraduate Students.

SOURCE: New York State Higher Education Services Corporation, *2006-07 Annual Report*; [www.hesc.com/content.nsf/HESC/HESC_News/\\$file/2006_2007AnnualReportNS2.pdf](http://www.hesc.com/content.nsf/HESC/HESC_News/$file/2006_2007AnnualReportNS2.pdf) (last viewed November 30, 2007).

TABLE J-26

**Student Loans Guaranteed
New York State — Fiscal Years 2002-03 — 2006-07**

Type of Loan	2002-03	2003-04	2004-05	2005-06	2006-07
--- Federal Stafford Loans (Subsidized and Unsubsidized) and Federal PLUS ¹ Loans ---					
Number	492,803	531,509	536,596	551,833	580,602
Amount (thousands) ²	\$ 2,196,256	\$ 2,427,799	\$ 2,553,481	\$ 2,707,774	\$ 2,968,368
Average	\$ 4,457	\$ 4,568	\$ 4,759	\$ 4,907	\$ 5,113
--- Federal Consolidation Loans ---					
Number	116,548	90,328	136,869	189,671	74,514
Amount (thousands) ³	\$ 3,244,893	\$ 2,531,563	\$ 3,545,106	\$ 4,734,088	\$ 1,626,774
Average	\$ 27,842	\$ 28,026	\$ 25,901	\$ 24,959	\$ 21,832

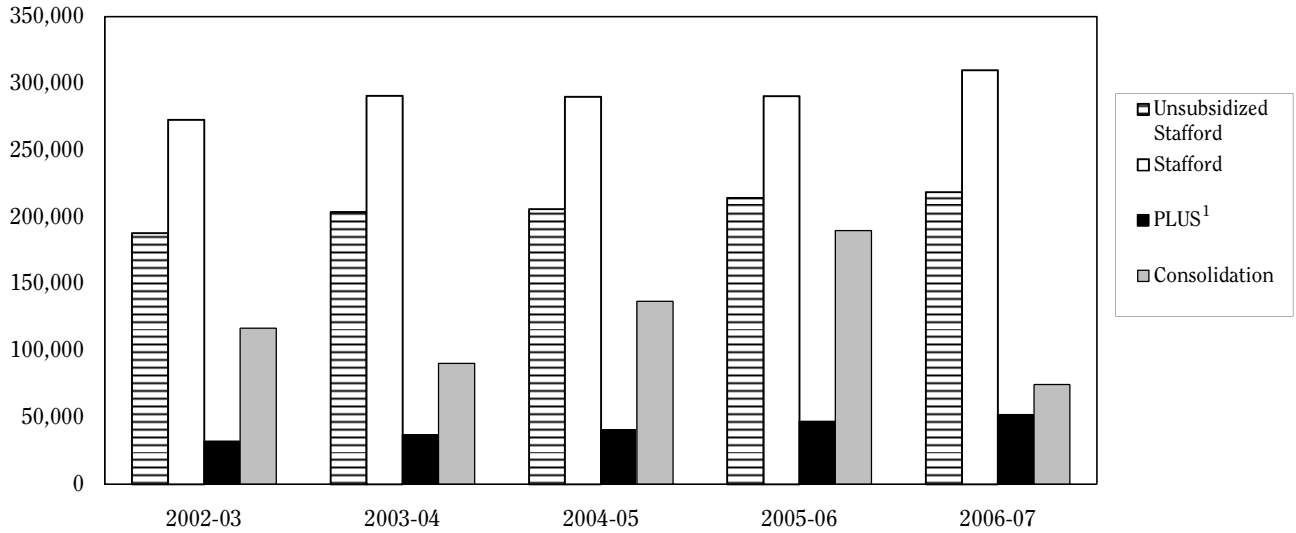
1 Parent Loan for Undergraduate Students.

2 Stafford and PLUS loan guaranteed amounts exclude adjustments and cancellations.

3 Consolidation guaranteed amount includes loan adjustments and is net of cancellations.

SOURCE: New York State Higher Education Services Corporation, *2006-07 Annual Report*; [www.hesc.com/content.nsf/HESC/HESC_News/\\$file/2006_2007AnnualReportNS2.pdf](http://www.hesc.com/content.nsf/HESC/HESC_News/$file/2006_2007AnnualReportNS2.pdf) (last viewed November 30, 2007).

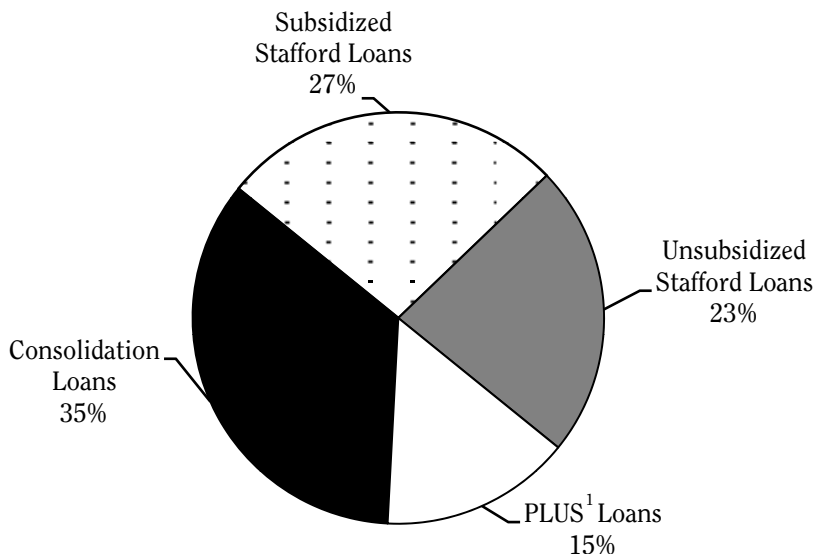
FIGURE J-1
Number of Student Loans Guaranteed
New York State — 2002-03 — 2006-07



1 Parent Loan for Undergraduate Students.

SOURCE: New York State Higher Education Services Corporation, *2006-07 Annual Bulletin*; www.hesc.com/content.nsf/HESC/HESC_News (last viewed November 9, 2007).

FIGURE J-2
Loan Dollars Guaranteed by Program
New York State — Fiscal Year 2006-07



1 Parent Loan for Undergraduate Students.

SOURCE: New York State Higher Education Services Corporation, *2006-07 Annual Bulletin*; [www.hesc.com/content.nsf/HESC/HESC_News/\\$file/2006_2007AnnualReportNS2.pdf](http://www.hesc.com/content.nsf/HESC/HESC_News/$file/2006_2007AnnualReportNS2.pdf) (last viewed November 16, 2007).

TABLE J-27

Student Loans Outstanding
New York State — Fiscal Years 2002-03 — 2006-07

	2002-03	2003-04	2004-05	2005-06	2006-07
Amount Outstanding (thousands)	\$ 16,061,356	\$ 17,559,215	\$ 19,941,402	\$ 22,148,604	\$ 21,210,220
Change from Prior Year Amount (thousands)	\$ 2,714,137	\$ 1,497,859	\$ 2,382,187	\$ 2,207,202	\$ -938,384
Percent	20.3%	9.3%	13.6%	11.1%	-4.2%

SOURCE: New York State Higher Education Services Corporation, *2006-07 Annual Report*; www.hesc.com/content.nsf/HESC/HESC_News/\$file/2006_2007AnnualReportNS2.pdf (last viewed November 9, 2007).

TABLE J-28

State University of New York
Fall Credit Course Enrollment — Selected Years 1960-2007

	All Credit Course Students			Undergraduate Students			Graduate Students		
	Total	Full-Time	Part-Time	Total	Full-Time	Part-Time	Total	Full-Time	Part-Time
1960	72,612	47,634	24,978	65,006	45,268	19,738	7,606	2,366	5,240
1965	176,415	107,780	68,635	159,690	101,582	58,108	16,725	6,198	10,527
1970	321,153	206,923	114,230	287,941	194,217	93,724	33,212	12,706	20,506
1971	350,934	225,902	125,032	313,882	211,873	102,009	37,052	14,029	23,023
1972	364,802	231,975	132,827	328,143	218,269	109,874	36,659	13,706	22,953
1973	384,899	243,279	141,620	346,471	229,167	117,304	38,428	14,112	24,316
1974	409,611	256,194	153,417	369,401	241,604	127,797	40,210	14,590	25,620
1975a	357,614	231,470	126,144	316,185	215,802	100,383	41,429	15,668	25,761
1976	342,855	225,461	117,394	306,436	210,688	95,748	36,419	14,773	21,646
1977	343,946	223,295	120,651	309,107	208,623	100,484	34,839	14,672	20,167
1978	348,361	222,081	126,280	314,579	207,516	107,063	33,782	14,565	19,217
1979	356,708	226,528	130,180	323,243	211,582	111,661	33,465	14,946	18,519
1980	372,415	237,552	134,863	338,627	222,109	116,518	33,788	15,443	18,345
1981	379,741	241,389	138,352	347,322	225,861	121,461	32,419	15,528	16,891
1982	378,170	241,339	136,831	347,249	226,265	120,984	30,921	15,074	15,847
1983	379,814	242,686	137,128	348,274	227,388	120,886	31,540	15,298	16,242
1984	369,075	232,793	136,282	337,618	217,328	120,290	31,457	15,465	15,992
1985	364,487	225,677	138,810	331,307	209,850	121,457	33,180	15,827	17,353
1986	365,272	223,550	141,722	329,993	207,008	122,985	35,279	16,542	18,737
1987	369,318	224,534	144,784	333,263	207,741	125,522	36,055	16,793	19,262
1988	378,976	232,472	146,504	341,404	215,257	126,147	37,572	17,215	20,357
1989	389,354	235,788	153,566	350,720	218,911	131,809	38,634	16,877	21,757
1990	403,028	242,187	160,841	362,784	224,735	138,049	40,244	17,452	22,792
1991	400,777	242,599	158,178	360,866	224,852	136,014	39,911	17,747	22,164
1992	404,065	246,175	157,890	364,685	228,108	136,577	39,380	18,067	21,313
1993	397,637	247,048	150,589	358,473	229,232	129,241	39,164	17,816	21,348
1994	391,706	244,725	146,981	352,519	226,777	125,742	39,187	17,948	21,239
1995	382,859	237,674	145,185	344,758	220,308	124,450	38,101	17,366	20,735
1996	368,459	233,355	135,104	331,243	215,862	115,381	37,216	17,493	19,723
1997	366,708	235,731	130,977	330,155	218,583	111,572	36,553	17,148	19,405
1998	368,466	236,988	131,478	331,303	219,457	111,846	37,163	17,531	19,632
1999	372,443	242,381	130,062	334,668	224,259	110,409	37,775	18,122	19,653
2000	374,377	244,017	130,360	335,637	225,658	109,979	38,740	18,359	20,381
2001	388,356	253,921	134,435	346,948	234,464	112,484	41,408	19,457	21,951
2002	402,945	269,828	133,117	359,882	248,497	111,385	43,063	21,331	21,732
2003	409,886	277,676	132,210	367,230	255,535	111,695	42,656	22,141	20,515
2004	413,577	282,179	131,398	372,446	261,433	111,013	41,131	20,746	20,385
2005	414,171	284,693	129,478	373,635	263,811	109,824	40,536	20,882	19,654
2006	417,583	290,688	126,895	377,291	268,068	109,223	40,292	22,620	17,672
2007	427,398	298,038	129,360	386,818	275,058	111,760	40,580	22,980	17,600

a Effective July 1, 1975, responsibility for the community colleges sponsored by the New York City Board of Education ceased to be under the program of the State University of New York. Responsibility was transferred to the City University of New York.

SOURCE: State University of New York, System Administration, Office of Institutional Research and Planning.

TABLE J-29

State University of New York
Credit Course Enrollment by Institution and Full-/Part-Time Status — Fall 2007

	All Students			Undergraduate			Graduate		
	Total	Full-Time	Part-Time	Total	Full-Time	Part-Time	Total	Full-Time	Part-Time
State University, Total	427,398	298,038	129,360	386,818	275,058	111,760	40,580	22,980	17,600
State-Operated/Funded Institutions	213,269	172,557	40,712	172,891	149,700	23,191	40,378	22,857	17,521
Doctoral Institutions	96,945	81,579	15,366	67,011	62,555	4,456	29,934	19,024	10,910
Research University Centers	83,520	69,599	13,921	58,561	54,857	3,704	24,959	14,742	10,217
Albany	17,684	14,352	3,332	12,748	11,959	789	4,936	2,393	2,543
Binghamton	14,435	12,745	1,690	11,515	11,042	473	2,920	1,703	1,217
Buffalo University	28,054	23,579	4,475	18,779	17,517	1,262	9,275	6,062	3,213
Stony Brook	23,347	18,923	4,424	15,519	14,339	1,180	7,828	4,584	3,244
Other Research/Doctoral Institutions	13,425	11,980	1,445	8,450	7,698	752	4,975	4,282	693
Ceramics	788	755	33	708	680	28	80	75	5
Cornell	7,166	7,019	147	5,386	5,246	140	1,780	1,773	7
Downstate Medical	1,598	1,165	433	309	196	113	1,289	969	320
Environmental Science and Forestry	2,299	1,699	600	1,783	1,413	370	516	286	230
Optometry	301	301	—	—	—	—	301	301	—
Upstate Medical	1,273	1,041	232	264	163	101	1,009	878	131
Comprehensive Colleges	90,894	70,897	19,997	81,226	67,311	13,915	9,668	3,586	6,082
Brockport	8,303	6,602	1,701	6,926	6,257	669	1,377	345	1,032
Buffalo State	10,993	8,660	2,333	9,139	8,052	1,087	1,854	608	1,246
Cortland	7,056	6,180	876	6,040	5,845	195	1,016	335	681
Empire State	12,914	4,224	8,690	12,197	4,175	8,022	717	49	668
Fredonia	5,424	5,059	365	5,085	4,898	187	339	161	178
Geneseo	5,548	5,344	204	5,395	5,274	121	153	70	83
New Paltz	7,690	5,913	1,777	6,224	5,364	860	1,466	549	917
Old Westbury	3,565	2,957	608	3,512	2,920	592	53	37	16
Oneonta	5,893	5,624	269	5,688	5,541	147	205	83	122
Oswego	8,660	6,955	1,705	7,680	6,570	1,110	980	385	595
Plattsburgh	6,259	5,592	667	5,634	5,293	341	625	299	326
Potsdam	4,338	3,999	339	3,614	3,481	133	724	518	206
Purchase	4,251	3,788	463	4,092	3,641	451	159	147	12
Technology Colleges	25,430	20,081	5,349	24,654	19,834	4,820	776	247	529
Alfred	3,184	2,907	277	3,184	2,907	277	—	—	—
Canton	2,737	2,187	550	2,737	2,187	550	—	—	—
Cobleskill	2,592	2,443	149	2,592	2,443	149	—	—	—
Delhi	2,767	2,384	383	2,767	2,384	383	—	—	—
Farmingdale	6,447	4,455	1,992	6,447	4,455	1,992	—	—	—
Maritime	1,487	1,345	142	1,329	1,247	82	158	98	60
Morrisville	3,388	2,799	589	3,388	2,799	589	—	—	—
Utica/Rome	2,828	1,561	1,267	2,210	1,412	798	618	149	469
Community Colleges	214,129	125,481	88,648	213,927	125,358	88,569	202	123	79
Adirondack	3,408	2,037	1,371	3,408	2,037	1,371	—	—	—
Broome	6,558	4,246	2,312	6,558	4,246	2,312	—	—	—
Cayuga County	4,050	2,078	1,972	4,050	2,078	1,972	—	—	—
Clinton	2,120	1,174	946	2,120	1,174	946	—	—	—
Columbia-Greene	1,823	993	830	1,823	993	830	—	—	—
Corning	5,072	2,345	2,727	5,072	2,345	2,727	—	—	—
Dutchess	8,248	4,206	4,042	8,248	4,206	4,042	—	—	—
Erie	13,053	8,697	4,356	13,053	8,697	4,356	—	—	—
Fashion Institute	9,938	6,870	3,068	9,736	6,747	2,989	202	123	79
Finger Lakes	5,351	2,852	2,499	5,351	2,852	2,499	—	—	—
Fulton-Montgomery	2,235	1,453	782	2,235	1,453	782	—	—	—
Genesee	6,472	3,002	3,470	6,472	3,002	3,470	—	—	—
Herkimer County	3,328	2,128	1,200	3,328	2,128	1,200	—	—	—
Hudson Valley	12,296	6,993	5,303	12,296	6,993	5,303	—	—	—
Jamestown	3,361	2,305	1,056	3,361	2,305	1,056	—	—	—
Jefferson	3,191	1,768	1,423	3,191	1,768	1,423	—	—	—
Mohawk Valley	6,044	3,766	2,278	6,044	3,766	2,278	—	—	—
Monroe	17,482	10,432	7,050	17,482	10,432	7,050	—	—	—
Nassau	21,483	14,445	7,038	21,483	14,445	7,038	—	—	—
Niagara Falls	6,331	3,616	2,715	6,331	3,616	2,715	—	—	—
North Country	1,739	954	785	1,739	954	785	—	—	—
Onondaga	10,637	5,644	4,993	10,637	5,644	4,993	—	—	—
Orange County	6,602	3,452	3,150	6,602	3,452	3,150	—	—	—
Rockland	6,653	3,990	2,663	6,653	3,990	2,663	—	—	—
Schenectady County	4,367	2,095	2,272	4,367	2,095	2,272	—	—	—
Suffolk County	22,092	12,832	9,260	22,092	12,832	9,260	—	—	—
Sullivan County	1,611	967	644	1,611	967	644	—	—	—
Tompkins-Cortland	3,213	2,404	809	3,213	2,404	809	—	—	—
Ulster County	3,298	1,532	1,766	3,298	1,532	1,766	—	—	—
Westchester	12,073	6,205	5,868	12,073	6,205	5,868	—	—	—

— Represents zero.

SOURCE: State University of New York, System Administration, Office of Institutional Research and Planning.

TABLE J-30

**State University of New York
Degrees and Certificates Awarded¹
Academic Years 1950-51 — 2006-07**

	All Awards	Undergraduate Certificates	Associate's	Bachelor's	Master's	Doctoral	First Professional	Graduate Certificates
1949-50	6,562	—	2,606	3,514	385	6	51	—
1950-51	7,183	—	2,712	3,771	555	1	144	—
1951-52	7,921	—	2,763	3,929	902	132	195	—
1952-53	7,564	—	2,431	3,835	931	120	247	—
1953-54	7,866	—	2,816	3,695	964	147	244	—
1954-55	8,045	—	3,337	3,218	1,093	139	258	—
1955-56	8,430	—	3,520	3,518	1,003	122	267	—
1956-57	8,968	—	3,762	3,793	1,046	114	253	—
1957-58	9,543	—	3,854	4,224	1,094	104	267	—
1958-59	10,128	—	4,281	4,403	1,105	87	252	—
1959-60	10,965	—	4,780	4,602	1,230	98	255	—
1960-61	11,960	—	5,322	4,959	1,305	120	254	—
1961-62	13,530	—	6,386	5,274	1,482	124	264	—
1962-63	16,437	—	7,383	6,710	1,775	143	426	—
1963-64	18,431	—	7,914	7,721	2,131	203	462	—
1964-65	21,128	—	9,415	8,743	2,273	234	463	—
1965-66	24,780	—	11,982	9,492	2,561	252	493	—
1966-67	28,693	—	14,763	10,282	2,793	316	539	—
1967-68	33,115	—	16,489	12,462	3,232	343	589	—
1968-69	39,638	—	19,918	14,796	3,828	487	609	—
1969-70	44,251	—	22,621	16,186	4,300	542	602	—
1970-71	51,664	—	26,690	18,279	5,428	602	665	—
1971-72	60,002	—	30,545	21,836	6,233	671	717	—
1972-73	66,521	—	33,644	24,015	7,247	796	819	—
1973-74	70,860	—	36,597	25,173	7,576	745	769	—
1974-75	72,326	—	38,573	24,393	7,809	744	807	—
1975-76a	68,383	2,615	30,397	25,585	7,733	821	954	278
1976-77	70,639	2,501	31,498	26,884	7,703	764	941	348
1977-78	67,708	2,532	30,578	25,951	6,510	819	995	323
1978-79	66,601	2,567	30,136	25,448	6,316	831	967	336
1979-80	65,377	2,597	30,175	24,493	5,917	805	1,033	357
1980-81	66,314	3,142	30,919	24,385	5,677	757	1,065	369
1981-82	67,464	2,813	31,200	25,325	5,836	824	1,108	358
1982-83	68,124	2,741	31,474	25,858	5,757	809	1,105	380
1983-84	68,155	2,593	31,892	25,798	5,557	835	1,108	372
1984-85	68,103	3,038	30,660	26,674	5,493	790	1,108	340
1985-86	66,455	2,541	30,214	25,946	5,486	806	1,103	359
1986-87	64,083	2,143	28,614	25,444	5,595	776	1,143	368
1987-88	64,576	1,924	28,488	25,544	6,185	906	1,114	415
1988-89	65,625	1,718	28,315	26,498	6,704	859	1,132	399
1989-90	67,842	1,696	29,949	26,761	7,027	897	1,056	456
1990-91	72,176	1,867	31,868	28,386	7,515	947	1,139	454
1991-92	75,161	1,910	32,908	29,728	8,098	953	1,093	471
1992-93	76,678	2,079	32,605	30,810	8,535	1,071	1,100	478
1993-94	74,407	2,040	32,501	28,929	8,240	1,077	1,096	524
1994-95	74,735	2,138	32,454	29,306	8,133	1,082	1,034	588
1995-96	73,197	1,934	30,916	29,507	8,046	1,103	1,138	553
1996-97	72,548	1,938	30,671	29,013	8,174	1,042	1,088	622
1997-98	71,444	1,773	30,465	28,469	8,016	1,029	1,125	567
1998-99	70,034	1,943	29,778	27,891	7,795	968	1,076	583
1999-2000	70,271	1,901	29,236	28,430	8,039	1,021	1,063	581
2000-01	70,337	1,932	28,783	28,938	7,929	971	1,113	671
2001-02	72,298	1,765	29,366	29,437	8,827	932	1,175	796
2002-03	75,764	1,906	29,614	30,948	10,287	1,037	1,177	795
2003-04	78,795	1,973	30,839	31,446	11,278	1,054	1,212	993
2004-05	79,316	1,869	30,990	32,552	10,494	1,161	1,220	1,030
2005-06r	80,695	1,908	31,341	33,282	10,532	1,239	1,228	1,165
2006-07	80,572	2,005	31,095	34,054	10,117	1,258	1,217	826
Total Since Inception	2,940,388	70,042	1,305,043	1,150,543	313,832	37,636	46,137	17,155

— Represents zero.

r Revised.

a Effective July 1, 1975, the community colleges sponsored by the New York City Board of Higher Education ceased to be under the program of the State University of New York. Responsibility was transferred to the City University of New York.

1 Table includes CUNY Community Colleges from 1948-49 through 1974-75.

SOURCE: State University of New York, System Administration, Office of Institutional Research and Planning.

TABLE J-31

State University of New York
Degrees and Other Formal Awards Granted by Institution and Award Level
July 1, 2006 — June 30, 2007

Campus	All Degrees	Undergraduate Certificates	Associate's Degrees	Bachelor's Degrees	Master's Degrees	Doctoral Degrees	First Professional Degrees	Graduate Certificates
State University, Total	80,572	2,005	31,095	34,054	10,117	1,258	1,217	826
State Operated/Funded Campuses	50,614	296	3,929	33,036	10,052	1,258	1,217	826
Doctoral Institutions	23,589	72	28	14,437	6,067	1,258	1,217	510
Research University Centers	20,405	—	1	12,565	5,580	1,023	743	493
Albany	4,385	—	—	2,770	1,341	163	—	111
Binghamton	3,677	—	—	2,875	678	102	—	22
Buffalo	7,037	—	1	3,939	1,951	394	596	156
Stony Brook	5,306	—	—	2,981	1,610	364	147	204
Other Research/Doctoral	3,184	72	27	1,872	487	235	474	17
Brooklyn Health Science Center	185	—	—	147	31	7	—	—
Alfred Ceramics	1,706	72	—	1,171	228	157	78	—
Cornell Statutory	489	—	—	190	102	15	181	1
Environmental Science & Forestry	421	—	27	280	79	22	—	13
Optometry	75	—	—	—	6	2	67	—
Syracuse Health Science Center	308	—	—	84	41	32	148	3
Comprehensive Colleges	21,686	11	735	16,842	3,783	—	—	315
Brockport	2,186	—	—	1,682	449	—	—	55
Buffalo College	2,621	—	—	1,791	822	—	—	8
Cortland	1,903	—	—	1,403	437	—	—	63
Empire State	2,906	—	735	2,062	109	—	—	—
Fredonia	1,257	—	—	1,060	189	—	—	8
Geneseo	1,244	—	—	1,142	102	—	—	—
New Paltz	2,148	—	—	1,582	481	—	—	85
Old Westbury	663	—	—	653	10	—	—	—
Oneonta	1,370	8	—	1,297	57	—	—	8
Oswego	1,966	—	—	1,503	412	—	—	51
Plattsburgh	1,525	—	—	1,238	260	—	—	27
Potsdam	1,113	—	—	716	397	—	—	—
Purchase	784	3	—	713	58	—	—	10

(Continued on the following page)

TABLE J-31 (continued)

State University of New York
Degrees and Other Formal Awards Granted by Institution and Award Level
July 1, 2006 — June 30, 2007

Campus	All Degrees	Undergraduate Certificates	Associate's Degrees	Bachelor's Degrees	Master's Degrees	Doctoral Degrees	First Professional Degrees	Graduate Certificates
Technology Colleges	5,339	213	3,166	1,757	202	—	—	1
Alfred	896	15	717	164	—	—	—	—
Canton	675	104	485	86	—	—	—	—
Cobleskill	540	—	352	188	—	—	—	—
Delhi	619	47	498	74	—	—	—	—
Farmingdale	1,160	45	580	535	—	—	—	—
Maritime	300	—	4	226	70	—	—	—
Morrisville	631	2	530	99	—	—	—	—
Utica/Rome	518	—	—	385	132	—	—	1
Community Colleges	29,958	1,709	27,166	1,018	65	—	—	—
Adirondack	488	24	464	—	—	—	—	—
Broome	1,025	35	990	—	—	—	—	—
Cayuga County	556	6	550	—	—	—	—	—
Clinton	290	19	271	—	—	—	—	—
Columbia-Greene	317	24	293	—	—	—	—	—
Corning	725	33	692	—	—	—	—	—
Dutchess	993	76	917	—	—	—	—	—
Erie	1,814	144	1,670	—	—	—	—	—
Fashion	2,867	22	1,762	1,018	65	—	—	—
Finger Lakes	742	46	696	—	—	—	—	—
Fulton-Montgomery	368	59	309	—	—	—	—	—
Genesee	799	69	730	—	—	—	—	—
Herkimer County	562	17	545	—	—	—	—	—
Hudson Valley	1,775	119	1,656	—	—	—	—	—
Jamestown	723	17	706	—	—	—	—	—
Jefferson	539	8	531	—	—	—	—	—
Mohawk Valley	788	64	724	—	—	—	—	—
Monroe	2,674	255	2,419	—	—	—	—	—
Nassau	2,788	75	2,713	—	—	—	—	—
Niagara County	931	114	817	—	—	—	—	—
North Country	302	72	230	—	—	—	—	—
Onondaga	860	33	827	—	—	—	—	—
Orange County	723	13	710	—	—	—	—	—
Rockland	784	27	757	—	—	—	—	—
Schenectady County	502	56	446	—	—	—	—	—
Suffolk County	2,708	49	2,659	—	—	—	—	—
Sullivan County	251	4	247	—	—	—	—	—
Tompkins-Cortland	525	6	519	—	—	—	—	—
Ulster County	389	68	321	—	—	—	—	—
Westchester	1,150	155	995	—	—	—	—	—

— Represents zero.

SOURCE: State University of New York, System Administration, Office of Institutional Research and Analysis.

TABLE J-32

State University of New York
Employees^{1,2} by Institution and Full- and Part-time Status — Fall 2007

Institution	All Employees			Faculty ³			Non-Faculty ⁴			Nonprofessional Employees ⁵		
	Total	Full-Time	Part-Time	Total	Full-Time	Part-Time	Total	Full-Time	Part-Time	Total	Full-Time	Part-Time
State University, All Campuses	85,826	54,629	31,197	32,105	15,532	16,573	30,467	20,472	9,995	23,254	18,625	4,629
System Administration	284	243	41	—	—	—	179	168	11	105	75	30
University-Wide Programs	371	246	125	3	—	3	208	193	15	160	53	107
State-Operated and Funded	60,043	42,301	17,742	18,204	11,098	7,106	25,357	16,971	8,386	16,482	14,232	2,250
Doctoral Institutions	40,296	29,062	11,234	9,401	6,662	2,739	20,052	12,975	7,077	10,843	9,425	1,418
Research University Centers	25,065	16,572	8,493	6,331	4,182	2,149	12,434	7,143	5,291	6,300	5,247	1,053
Albany	3,911	2,259	1,652	1,100	662	438	1,927	816	1,111	884	781	103
Binghamton	3,243	1,937	1,306	820	562	258	1,536	695	841	887	680	207
Buffalo — including HSC	6,543	4,207	2,336	2,329	1,552	777	2,926b	1,505	1,421	1,288	1,150	138
Stony Brook — including HSC	11,368	8,169	3,199	2,082a	1,406	676	6,045b	4,127	1,918	3,241	2,636	605
Other Research/Doctoral Institutions	15,231	12,490	2,741	3,070	2,480	590	7,618	5,832	1,786	4,543	4,178	365
Alfred Ceramics	170	152	18	64	56	8	19	18	1	87	78	9
Cornell Contract Colleges	4,781	3,673	1,108	1,446	1,324c	122	1,788	944	844	1,547	1,405	142
Downstate Medical	4,445	4,023	422	694a	569	125	2,601b	2,338	263	1,150	1,116	34
Environmental Science and Forestry	587	358	229	156	119	37	283	115	168	148	124	24
Optometry	361	243	118	118	52	66	154	105	49	89	86	3
Upstate Medical	4,887	4,041	846	592a	360	232	2,773b	2,312	461	1,522	1,369	153
Comprehensive Colleges	15,434	10,216	5,218	6,978	3,448	3,530	4,107	3,063	1,044	4,349	3,705	644
Brockport ⁶	1,410	948	462	640	354	286	399	263	136	371	331	40
Buffalo State	1,776	1,205	571	787	429	358	534	396	138	455	380	75
Cortland	1,268	891	377	535	306	229	358	254	104	375	331	44
Empire State	1,520	566	954	1,015	158	857	262	231	31	243	177	66
Fredonia	1,017	694	323	469	264	205	227	175	52	321	255	66
Geneseo	900	720	180	334	250	84	273	190	83	293	280	13
New Paltz	1,520	942	578	714	323	391	400	260	140	406	359	47
Old Westbury	589	404	185	272	133	139	153	128	25	164	143	21
Oneonta	1,088	789	299	446	234	212	313	249	64	329	306	23
Oswego	1,308	982	326	509	311	198	319	235	84	480	436	44
Plattsburgh	1,142	775	367	499	274	225	301	210	91	342	291	51
Potsdam	886	708	178	382	263	119	235	200	35	269	245	24
Purchase	1,010	592	418	376	149	227	333	272	61	301	171	130

(Continued on the following page)

TABLE J-32 (continued)

State University of New York
Employees^{1,2} by Institution and Full- and Part-time Status — Fall 2007

Institution	Professional Employees									Nonprofessional Employees ⁵		
	All Employees			Faculty ³			Non-Faculty ⁴			Total	Full-Time	Part-Time
	Total	Full-Time	Part-Time	Total	Full-Time	Part-Time	Total	Full-Time	Part-Time			
Technology Colleges	4,313	3,023	1,290	1,825	988	837	1,198	933	265	1,290	1,102	188
Alfred	556	484	72	199	159	40	146	131	15	211	194	17
Canton	460	325	135	173	107	66	119	102	17	168	116	52
Cobleskill	447	374	73	167	106	61	120	118	2	160	150	10
Delhi	450	338	112	176	116	60	136	107	29	138	115	23
Farmingdale ⁷	1,012	549	463	555	197	358	201	153	48	256	199	57
Maritime	342	241	101	113	65	48	149	108	41	80	68	12
Morrisville ⁷	626	446	180	258	150	108	193	125	68	175	171	4
Utica/Rome	420	266	154	184	88	96	134	89	45	102	89	13
Community Colleges	25,128	11,839	13,289	13,898	4,434	9,464	4,723	3,140	1,583	6,507	4,265	2,242
Adirondack	375	204	171	237	92	145	46	46	—	92	66	26
Broome	726	406	320	426	165	261	116	104	12	184	137	47
Cayuga County	401	179	222	237	73	164	80	54	26	84	52	32
Clinton	235	131	104	130	52	78	43	39	4	62	40	22
Columbia-Greene	273	144	129	126	51	75	40	34	6	107	59	48
Corning	511	316	195	218	102	116	168	132	36	125	82	43
Dutchess	753	361	392	417	135	282	111	73	38	225	153	72
Erie ⁸	2,243	794	1,449	1,443	362	1,081	232	161	71	568	271	297
Fashion Institute	1,578	723	855	929	235	694	350	295	55	299	193	106
Finger Lakes	496	282	214	300	112	188	69	63	6	127	107	20
Fulton-Montgomery	251	148	103	120	54	66	70	45	25	61	49	12
Genesee	611	261	350	329	77	252	139	98	41	143	86	57
Herkimer County	385	251	134	164	78	86	101	80	21	120	93	27
Hudson Valley ⁷	1,096	636	460	651	271	380	173	131	42	272	234	38
Jamestown	541	226	315	336	79	257	71	60	11	134	87	47
Jefferson	311	199	112	164	74	90	78	62	16	69	63	6
Mohawk Valley	713	396	317	297	140	157	241	108	133	175	148	27
Monroe	1,676	895	781	868	308	560	376	226	150	432	361	71
Nassau	2,523	1,204	1,319	1,343	618	725	467	175	292	713	411	302
Niagara County	749	310	439	475	120	355	85	59	26	189	131	58
North Country	264	134	130	182	52	130	37	37	—	45	45	—
Onondaga	945	517	428	570	163	407	135	132	3	240	222	18
Orange County	1,193	415	778	534	143	391	262	127	135	397	145	252
Rockland	1,013	417	596	646	111	535	129	89	40	238	217	21
Schenectady County ⁷	430	186	244	210	68	142	144	56	88	76	62	14
Suffolk County	2,932	1,004	1,928	1,479	355	1,124	568	300	268	885	349	536
Sullivan County	232	160	72	113	48	65	86	80	6	33	32	1
Tompkins-Cortland	463	236	227	284	66	218	77	74	3	102	96	6
Ulster County	363	179	184	184	65	119	85	56	29	94	58	36
Westchester ⁷	846	525	321	486	165	321	144	144	—	216	216	—

— Represents zero.

a Includes hospital employees, exception Buffalo University; includes medical faculty and other medical employees.

b Includes medical interns and residents.

c Cornell Contract College data include full-time employees of the Geneva Experimental Station.

1 Does not include employees of the Research Foundation or the Construction Fund.

2 When using headcount to summarize full-time and part-time employees, each person is counted only once regardless of the amount of work completed for the institution. In this summary, no attempt has been made to reduce the part-time employees to their full-time equivalency (FTE). Full-time and part-time status is determined by the institution.

3 Faculty includes employees with a faculty title who teach, conduct research, and/or public service, including medical faculty. Does not include support personnel, such as counselors and librarians.

4 Professional Non-Faculty Employees include a combination of the following personnel: a) other professionals; b) executive/administrative personnel; and c) teaching assistants and associates.

5 Non-Professional Employees include: Technical and paraprofessional employees, clerical and secretarial, skilled crafts and service, and maintenance employees.

6 Brockport's data include employees working at the Rochester Educational Opportunity Center.

7 Includes employees working at Education Opportunity Centers.

8 Includes central staff employees.

SOURCE: State University of New York, System Administration, Office of Institutional Research and Planning.

TABLE J-33

Revenues of Public Elementary and Secondary Schools by Source of Revenue
New York State — Selected School Years 1964-65 — 2005-06
(thousands)

School Year Ended	All Sources ¹	State	Federal ²	Local Sources		
				Property and Related Taxes	Nonproperty Taxes	Other
1965	\$ 2,564,867	\$ 1,076,030	\$ 22,104	\$ 1,393,755	\$ 19,399	\$ 53,579
1970	4,517,333	2,057,993	188,069	2,117,419	35,534	118,318
1975	7,416,702	2,930,783	367,538	3,777,613	42,382	298,386
1976	7,632,530	3,070,887	320,514	3,928,893	48,338	263,898
1977	7,872,765	3,100,560	311,107	4,112,929	53,409	294,760
1978	8,357,221	3,142,598	357,813	4,517,614	57,310	281,886
1979	8,722,373	3,378,025	422,959	4,516,740	66,460	338,189
1980	9,357,301	3,602,443	504,674	4,788,948	67,114	394,122
1981	10,047,772	3,957,794	441,203	5,127,194	69,793	451,788
1982	10,961,072	4,272,493	455,664	5,689,604	79,974	463,337
1983	11,559,279	4,644,808	415,650	5,929,336	95,678	473,807
1984	12,440,590	4,876,659	452,261	6,451,210	115,205	545,255
1985	13,258,532	5,483,139	443,279	6,713,753	99,391	518,970
1986	14,577,497	6,001,342	584,834	7,366,824	128,434	496,063
1987	15,642,499	6,663,867	498,218	7,846,334	131,377	502,703
1988	16,960,413	7,391,573	497,882	8,421,956	137,965	511,037
1989	18,472,852	8,095,693	570,585	9,043,113	150,798	612,663
1990	19,426,815r	8,036,520	706,151	9,862,502	167,360	654,282r
1991	21,009,178r	8,992,227r	714,265	10,386,407	168,003	748,276r
1992	21,229,565	8,662,708	879,886	10,674,410	180,607	831,954
1993	22,249,881	8,817,919	992,456	11,486,368	168,524	784,615
1994	23,497,040	9,065,209	1,086,492	12,255,217	203,088	887,034
1995	24,488,976	9,832,201	1,047,208	12,582,319	181,481	845,767
1996	25,408,873	10,188,856	1,134,569	12,996,556	182,479	906,413
1997	26,132,515	10,401,326	1,049,139	13,360,934	187,406	1,133,710
1998	27,363,010r	10,964,334	1,095,722	14,129,751	191,153	982,049r
1999	29,437,657	12,537,210	1,350,041	14,079,923	196,411	1,274,072
2000	31,197,396	13,691,138	1,429,909	14,657,873	207,237	1,211,239
2001	33,816,803	15,728,255	1,488,431	14,951,534	217,252	1,431,331
2002	35,179,401	17,093,224	1,771,551	14,858,220	215,482	1,240,924
2003	37,470,378	17,179,094	2,149,320	16,610,232	224,779	1,306,953
2004	40,151,547	17,520,589	2,593,597	18,195,527	226,115	1,615,718
2005	43,185,271	18,725,271	2,674,224	19,754,413	238,111	1,793,251
2006	46,306,624	19,821,003	2,837,247	21,441,749	251,714	1,954,911

r Revised.

2 Includes Federal aid paid into General Fund and Special Aid Fund.

1 Does not include the following special purpose funds: Trust and Agency Fund, School Store Fund, School Lunch Fund, and Capital Fund.

SOURCE: New York State Education Department, State Aid Unit.

TABLE J-34

**Revenues of Public Elementary and Secondary Schools by Source of Revenue
New York State by County — School Year 2005-06
(thousands)**

State	All Sources ¹	State	Federal ²	Local Sources		
				Property and Related Taxes	Nonproperty Taxes	Other
New York State	\$ 46,306,624	\$ 19,821,003	\$ 2,837,247	\$ 21,441,749	\$ 251,714	\$ 1,954,911
New York City	17,124,043	7,223,905	1,640,887	7,551,885	—	707,369
Rest of State						
Albany	621,774	227,633	30,123	329,173	7,285	27,561
Allegany	128,830	92,418	8,579	23,896	—	3,936
Broome	438,947	248,819	22,970	151,883	—	15,276
Cattaraugus	225,584	149,915	14,353	44,807	897	15,611
Cayuga	152,265	95,370	8,321	43,535	10	5,029
Chautauqua	328,245	209,607	21,208	86,616	—	10,813
Chemung	177,497	109,799	11,427	45,965	—	10,306
Chenango	138,107	97,924	7,590	27,302	—	5,290
Clinton	196,896	117,460	9,571	64,174	—	5,690
Columbia	147,452	61,187	7,758	67,299	747	10,460
Cortland	98,362	64,206	5,749	24,743	7	3,656
Delaware	121,706	64,304	6,430	44,084	—	6,887
Dutchess	682,639	265,523	24,215	369,010	—	23,890
Erie	1,930,350	1,073,819	120,522	559,501	109,026	67,486
Essex	85,020	32,806	5,241	44,225	27	2,719
Franklin	133,995	87,636	8,264	32,465	—	5,629
Fulton	124,861	79,810	8,274	28,952	1,355	6,469
Genesee	147,950	89,123	6,383	43,182	1,159	8,103
Greene	115,614	49,486	5,202	56,745	—	4,181
Hamilton	18,302	2,477	400	14,545	—	880
Herkimer	149,947	98,735	8,786	39,354	—	3,072
Jefferson	230,991	153,230	22,139	47,657	1,498	6,466
Lewis	65,834	46,457	3,685	13,964	—	1,728
Livingston	139,150	86,867	6,131	41,673	224	4,255
Madison	161,479	97,444	7,198	49,294	16	7,527
Monroe	1,781,859	888,601	98,484	676,380	55,791	62,604
Montgomery	108,270	71,067	7,089	26,914	—	3,200
Nassau	4,154,461	1,022,982	82,307	2,904,173	3,301	141,697
Niagara	481,750	284,521	28,065	145,746	2,901	20,517
Oneida	501,905	318,518	30,380	131,986	3,413	17,609
Onondaga	1,078,537	581,177	59,904	372,531	15,267	49,659
Ontario	258,101	133,670	11,278	105,366	47	7,740
Orange	1,040,149	469,269	47,406	476,831	2,059	44,586
Orleans	103,942	69,306	6,529	25,434	142	2,531
Oswego	323,653	193,000	21,094	101,765	196	7,597
Otsego	134,375	79,865	7,559	42,042	—	4,910
Putnam	318,224	95,590	5,349	204,639	46	12,599
Rensselaer	347,574	187,023	16,219	131,395	1,468	11,469
Rockland	817,796	225,692	28,698	533,061	—	30,346
St. Lawrence	253,040	171,779	12,446	58,193	546	10,077
Saratoga	479,960	215,353	14,738	238,216	—	11,653
Schenectady	320,045	154,714	21,268	130,077	3,264	10,722
Schoharie	88,060	52,009	4,018	28,510	—	3,523
Schuyler	33,570	21,781	1,992	8,448	—	1,349
Seneca	75,885	47,210	3,818	22,266	—	2,591
Steuben	257,221	168,952	14,094	63,948	498	9,730
Suffolk	4,678,007	1,771,989	116,525	2,590,639	—	198,855
Sullivan	215,705	90,477	11,326	105,262	1	8,640
Tioga	117,908	78,193	6,093	28,420	—	5,201
Tompkins	191,867	82,793	7,683	84,968	—	16,422
Ulster	469,665	186,427	17,874	246,132	1	19,232
Warren	161,414	69,575	6,079	80,429	—	5,329
Washington	148,476	91,510	8,200	43,188	—	5,577
Wayne	254,201	149,627	13,664	76,576	5,173	9,160
Westchester	3,109,291	850,133	99,607	1,877,628	35,349	246,575
Wyoming	74,708	50,792	3,416	18,917	—	1,583
Yates	41,165	21,448	2,639	15,740	—	1,338

NOTE: Detail may not add to totals due to rounding.

2 Includes Federal Aid paid into General Fund and Special Aid Fund.

— Represents zero.

SOURCE: New York State Education Department, State Aid Unit.

1 Does not include the following special purpose funds: Trust and Agency Fund, School Store Fund, School Lunch Fund, and Capital Fund.

TABLE J-35

**Expenditures of Public Elementary and Secondary Schools
by Major Category of Expenditure
New York State
Selected School Years 1964-65 — 2005-06
(thousands)**

School Year Ended	From General Fund ¹ and Debt Service Fund ²						From Special Aid Fund ⁵
	From All Funds ³	Instruction		Operation and Maintenance of Plant	Debt Service	All Other ⁴	
		Regular Day Schools	Special Schools				
1965	\$ 2,537,833	\$ 1,486,899	\$ 22,501	\$ 228,372	\$ 282,941	\$ 517,120	X
1970	4,548,189	2,539,364	49,656	347,532	442,621	998,783	\$ 170,234
1975	7,394,850	3,939,161	43,445	647,115	634,586	1,807,379	323,164
1976	7,621,188	3,991,736	43,398	647,384	650,987	1,977,279	310,404
1977	7,901,601	4,066,254	46,915	655,487	786,323	2,040,292	306,330
1978	8,358,913	4,327,296	84,337	705,083	732,182	2,166,438	343,578
1979	8,703,442	4,463,067	91,908	724,993	670,582	2,360,845	392,047
1980	9,347,848	4,796,488	71,861	836,114	621,434	2,558,711	463,240
1981	9,969,092	5,152,584	63,889	916,143	609,652	2,789,285	437,539
1982	10,879,138	5,562,795	40,669	1,001,578	651,695	3,195,334	427,067
1983	11,549,609	6,002,668	41,191	1,049,445	663,552	3,378,598	414,155
1984	12,414,761	6,575,933	39,996	1,077,266	625,589	3,693,507	402,470
1985	13,244,995	7,080,380	46,788	1,113,774	641,219	3,891,273	471,561
1986	14,456,668	7,790,515	61,887	1,177,529	619,671	4,272,827	534,239
1987	15,461,097	8,632,891	53,505	1,217,190	619,697	4,477,532	460,282
1988	16,885,750	9,313,084	59,740	1,353,003	624,384	4,837,086	698,453
1989	18,317,488	10,185,578	66,347	1,516,324	656,908	5,039,206	853,125
1990	19,333,012r	11,017,373	70,357	1,592,040	717,590	4,915,455r	1,020,197r
1991	20,933,528r	11,829,822	71,825	1,600,772	848,860	5,420,144r	1,162,105r
1992	21,405,741	11,631,466	70,694	1,627,135	920,971	5,503,240	1,652,234
1993	22,567,406	12,127,022	71,373	1,708,641	961,373	5,852,799	1,846,195
1994	23,860,073	12,859,010	75,794	1,779,616	997,086	6,259,029	1,889,538
1995	24,945,607	13,581,742	76,542	1,816,917	1,116,162	6,303,861	2,050,383
1996	25,603,562	13,985,996	74,919	1,895,752	1,233,764	6,485,349	1,927,782
1997	26,151,873	14,368,852	81,030	1,947,265	1,231,295	6,539,637	1,983,794
1998	27,717,505	15,355,478	87,126	1,993,645	1,322,528	6,743,142	2,215,584
1999	29,590,607	16,336,846	105,640	2,112,417	1,465,088	7,098,496	2,472,120
2000	31,704,767	17,315,589	218,380	2,242,518	1,676,728	7,524,573	2,726,979
2001	34,215,830	18,437,699	228,522	2,443,554	1,810,275	8,177,678	3,118,102
2002	35,488,090	19,090,749	234,861	2,429,991	1,693,628	8,657,798	3,381,063
2003	37,741,721	19,843,262	229,690	2,556,241	1,697,861	9,526,897	3,887,770
2004	39,809,145	20,248,707	223,064	2,722,444	2,049,218	10,365,789	4,199,923
2005	42,957,730	21,124,942	204,158	2,891,766	2,383,975	11,851,614	4,501,276
2006	45,904,234	22,324,813	210,628	3,038,770	2,885,707	12,987,477	4,456,840

r Revised.

X Not applicable.

1 The main fund of each school district; it supports expenditures for all operations not provided for in special purpose funds.

2 Created in 1978 to provide principal and interest payments for long-term debt; prior to 1978 these were paid from the General Fund.

3 Does not include the following special purpose funds: Trust and Agency Fund, School Store Fund, School Food Service, and Capital Fund.

Note: Starting with 1994, Risk Retention Fund is included. This fund is used in those instances where a school district has established a self-insurance program.

4 Includes Board of Education, central administration, community services, transportation, nonbudgetary expenditures, undistributed expenditures, interfund transfers, and fixed charges.

5 Created in 1964 for special projects or programs supported in whole or in part with Federal funds.

SOURCE: New York State Education Department, State Aid Unit.

TABLE J-36

**Expenditures per Pupil¹ in Public Elementary and Secondary Schools
by Major Category of Expenditure
New York State — Selected School Years 1964-65 — 2005-06**

School Year Ended	From General Fund ² and Debt Service Fund ³							From Special Aid Fund ⁶
	From All Funds ⁴	Instruction		Operation and Maintenance of Plant	Debt Service	All Other ⁵		
		Regular Day Schools	Special Schools					
1965	\$ 890.14	\$ 521.52	\$ 7.89	\$ 80.10	\$ 99.24	\$ 181.39	X	
1970r	1,414.21	820.29	16.04	112.26	142.98	322.64	\$ 54.99	
1975	2,433.05	1,296.06	14.29	212.91	208.79	594.66	106.33	
1976	2,529.52	1,324.88	14.40	214.87	216.07	656.28	103.02	
1977	2,709.58	1,394.38	16.09	224.78	269.64	699.65	105.04	
1978	2,975.23	1,540.24	30.02	250.96	260.61	771.11	122.29	
1979	3,214.27	1,648.26	33.94	267.75	247.65	871.88	144.79	
1980	3,570.30	1,831.96	27.45	319.34	237.35	977.27	176.93	
1981	3,913.85	2,022.89	25.08	359.68	239.35	1,095.07	171.78	
1982	4,432.97	2,266.70	16.57	408.12	265.55	1,302.01	174.02	
1983	4,807.50	2,498.60	17.14	436.83	276.20	1,406.34	172.39	
1984	5,256.58	2,784.34	16.93	456.13	264.88	1,563.89	170.41	
1985	5,644.46	3,017.36	19.94	474.64	273.26	1,658.30	200.96	
1986	6,252.55	3,369.42	26.77	509.28	268.01	1,848.01	231.06	
1987	6,720.15	3,752.28	23.26	529.05	269.35	1,946.15	200.06	
1988	7,410.14	4,086.95	26.22	593.75	274.00	2,122.71	306.51	
1989	8,077.16	4,491.37	29.26	668.63	289.67	2,222.04	376.19	
1990r	8,491.27	4,838.96	30.90	699.24	315.17	2,158.92	448.08	
1991r	9,063.81	5,122.08	31.10	693.10	367.54	2,346.82	503.17	
1992	9,111.89	4,951.23	30.09	692.63	392.03	2,341.59	703.32	
1993	9,496.32	5,103.03	30.03	718.99	404.54	2,462.85	776.88	
1994	9,923.40	5,348.06	31.52	740.14	414.69	2,603.13	785.86	
1995	9,196.45	5,007.04	28.21	669.82	411.48	2,324.01	755.89	
1996	9,288.54	5,073.88	27.18	687.75	447.59	2,352.77	699.37	
1997	9,372.84	5,149.80	29.04	697.90	441.30	2,343.81	710.99	
1998	9,868.85	5,467.34	31.02	709.84	470.89	2,400.90	788.86	
1999	10,477.00	5,784.00	37.00	748.00	519.00	2,514.00	875.00	
2000	11,195.00	6,114.00	77.00	792.00	592.00	2,657.00	963.00	
2001	12,093.00	6,517.00	81.00	864.00	640.00	2,889.00	1,102.00	
2002	12,560.00	6,757.00	83.00	860.00	599.00	3,064.00	1,197.00	
2003	13,369.00	7,029.00	81.00	905.00	601.00	3,376.00	1,377.00	
2004	14,088.00	7,166.00	79.00	963.00	725.00	3,669.00	1,486.00	
2005	15,329.00	7,538.00	73.00	1,032.00	851.00	4,229.00	1,606.00	
2006	16,516.00	8,033.00	76.00	1,093.00	1,038.00	4,672.00	1,604.00	

r Revised.

X Not applicable.

1 Based on average daily attendance, which is determined by dividing the total number of attendance days of all pupils in public elementary and secondary schools by the number of days school was in session.

2 The main fund of each school district; it supports expenditures for all operations not provided for in special purpose funds.

3 Created in 1978 to provide principal and interest payments for long-term debt; prior to 1978 these were paid from the General Fund.

4 Does not include the following special purpose funds: Trust and Agency Fund, School Store Fund, School Food Service Fund, and Capital Fund.

Note: Starting in 1994, Risk Retention Fund is included. This fund is used in those instances where a school district has established a self-insurance program.

5 Includes Board of Education, central administration, community services, transportation, nonbudgetary expenditures, undistributed expenditures, interfund transfers, and fixed charges.

6 Created in 1964 for special projects or programs supported in whole or in part with Federal funds.

SOURCE: New York State Education Department, State Aid Unit.

TABLE J-37

**Expenditures of Public Elementary and Secondary Schools
by Major Category of Expenditure
New York State by County — School Year 2005-06
(thousands)**

	From General Fund and Debt Service Fund and Risk Retention Fund								
	All Expenditures	School District Administration	Instruction			Operation and Maintenance of Plant	Debt Service	All Other ¹	From Special Aid Fund
			Regular Day Schools	Special Schools	Transportation				
New York State	\$ 45,904,234	\$ 1,135,761	\$ 22,324,813	\$ 210,628	\$ 2,325,566	\$ 3,038,770	\$ 2,885,707	\$ 9,526,150	\$ 4,456,840
New York City	17,124,043	343,094	7,433,687	91,345	852,589	1,049,167	1,163,442	3,408,535	2,782,186
Rest of State									
Albany	617,620	14,807	320,778	3,087	30,632	39,943	43,514	125,772	39,087
Allegany	127,572	4,505	60,236	238	5,645	8,345	15,534	25,353	7,716
Broome	440,838	12,970	217,905	2,512	15,671	30,789	26,855	108,583	25,551
Cattaraugus	226,593	6,331	114,751	1,338	10,425	15,204	15,291	47,049	16,205
Cayuga	153,072	5,042	76,644	662	6,621	9,977	14,580	30,051	9,494
Chautauqua	321,900	8,843	163,355	1,377	11,999	21,778	28,823	59,938	25,787
Chemung	175,825	5,433	79,707	820	5,118	11,959	12,466	49,153	11,170
Chenango	137,685	4,190	65,768	577	6,016	8,412	13,224	31,527	7,972
Clinton	192,975	4,879	97,835	317	8,796	11,710	15,793	44,145	9,500
Columbia	148,177	4,615	70,433	1,200	8,338	11,370	9,837	34,403	7,981
Cortland	100,674	2,689	52,776	284	3,637	6,702	6,184	21,731	6,671
Delaware	115,806	4,880	53,832	450	5,639	7,476	11,442	25,490	6,598
Dutchess	678,074	17,973	356,505	2,343	39,107	42,671	31,561	156,629	31,287
Erie	1,910,794	39,481	913,638	9,103	107,582	147,667	136,498	353,714	203,113
Essex	83,572	3,462	38,954	108	4,083	5,285	6,167	20,358	5,156
Franklin	132,084	4,045	65,397	436	5,382	9,456	10,202	27,832	9,333
Fulton	124,226	3,298	60,012	322	5,055	8,754	9,460	28,441	8,884
Genesee	143,954	4,668	73,941	56	6,106	11,012	14,119	28,244	5,807
Greene	112,831	3,822	56,131	195	6,960	6,870	8,015	25,477	5,362
Hamilton	17,599	1,144	8,576	19	1,242	1,224	758	4,203	435
Herkimer	152,523	4,777	72,468	486	7,430	10,401	16,088	31,630	9,243
Jefferson	230,987	5,716	113,953	768	13,294	16,890	17,403	48,347	14,617
Lewis	65,869	1,986	31,150	97	3,676	4,850	7,721	12,593	3,796
Livingston	135,717	4,525	66,026	632	6,126	9,700	17,277	25,491	5,940
Madison	155,604	5,112	74,212	1,113	7,900	10,850	13,173	36,252	6,992
Monroe	1,755,352	52,994	853,557	5,985	99,422	108,787	107,829	377,133	149,645
Montgomery	108,677	2,633	52,366	264	6,055	7,705	7,974	23,695	7,985
Nassau	4,061,984	121,397	2,317,499	19,435	201,950	288,184	131,483	857,073	124,959
Niagara	471,600	11,349	232,423	2,531	24,118	34,205	34,055	96,933	35,987
Oneida	498,275	13,288	241,408	3,854	25,301	35,580	31,939	109,896	37,010
Onondaga	1,074,880	24,219	495,283	2,302	47,240	78,926	69,821	239,491	117,596
Ontario	252,782	6,963	129,683	379	11,501	16,114	26,028	49,910	12,205
Orange	1,021,732	26,288	529,906	5,375	59,935	64,344	49,742	222,415	63,729
Orleans	98,223	2,577	50,568	279	5,077	7,044	7,850	18,589	6,238
Oswego	323,980	6,874	162,674	809	15,922	24,116	18,053	72,956	22,576
Otsego	133,359	4,661	63,923	621	5,670	8,577	11,209	30,128	8,569
Putnam	309,812	7,998	169,530	1,989	17,233	21,193	13,730	71,806	6,333
Rensselaer	341,296	9,612	169,985	1,598	20,003	22,082	26,948	72,379	18,688
Rockland	797,704	21,288	430,978	4,552	48,203	57,251	30,032	166,132	39,266
St. Lawrence	250,130	7,489	115,387	838	12,255	16,217	17,249	64,832	15,863
Saratoga	475,638	10,953	246,116	2,479	22,558	32,060	38,050	107,543	15,880
Schenectady	316,553	7,018	164,088	832	15,695	20,615	22,032	59,339	26,935
Schoharie	87,281	2,474	41,130	148	5,345	5,500	8,883	19,207	4,595
Schuyler	33,187	1,213	14,690	103	1,501	2,306	3,956	7,374	2,043
Seneca	73,407	2,195	35,827	315	3,384	5,163	8,667	13,518	4,337
Steuben	259,440	8,070	124,245	617	12,200	16,797	21,775	59,418	16,318
Suffolk	4,611,672	122,393	2,500,687	17,775	254,829	331,760	255,842	960,925	167,456
Sullivan	211,896	6,316	107,545	523	12,944	14,625	13,020	44,834	12,088
Tioga	117,694	3,405	53,450	176	5,654	8,750	11,818	27,638	6,803
Tompkins	188,835	5,727	95,259	184	8,709	13,638	10,594	43,790	10,934
Ulster	466,889	9,996	250,770	2,947	27,488	27,071	19,130	107,698	21,791
Warren	160,506	4,472	81,029	499	6,727	11,979	11,744	37,109	6,947
Washington	146,350	4,186	72,941	915	7,156	9,278	10,141	34,040	7,693
Wayne	246,689	7,592	122,828	926	12,025	16,540	21,650	50,133	14,995
Westchester	3,067,453	93,927	1,603,922	11,250	137,601	206,295	168,473	646,662	199,322
Wyoming	74,217	2,852	36,296	116	4,224	5,112	7,782	14,675	3,161
Yates	40,127	1,055	20,150	127	2,572	2,494	2,781	7,938	3,010

NOTE: Detail may not add to totals due to rounding.

SOURCE: New York State Education Department, State Aid Unit.

1 Includes community services, undistributed expenditures, interfund transfers, and fixed charges.

TABLE J-38
Libraries by Type
New York State — 1995 and 2006

Type	Libraries		Volumes (thousands)		Staff				Annual Operating Expenditures (thousands)	
	1995	2006	1995	2006	Professional		Other		1995	2006
					1995	2006	1995	2006		
All Libraries	7,484	6,595	191,869	245,783	11,785	11,117	NA	NA	NA	NA
Public Libraries ¹	741	755	63,418	70,892	4,306	4,210	8,709	9,022	\$ 628,303	\$ 1,089,915
Academic Libraries ²	272	261	71,781	111,961	2,843	2,458	3,479	5,787	\$ 358,607	\$ 514,503
School Libraries ³										
Public	4,111	3,999	42,322	48,695	3,213	3,087	1,965	1,664	\$ 224,681	\$ 294,910
Nonpublic	2,149	1,379	10,785	9,874	1,281	1,229	NA	NA	NA	NA
Institution Libraries ⁴	210	200	1,230	1,413	63	48	72	42	\$ 6,557	\$ 5,913
New York State Library ⁵	1	1	2,333	2,948	79	85	109	94	\$ 11,168	\$ 13,772

NA Not available.

1 Includes one library that is not a member of one of 23 library systems in the State; staff positions are full-time equivalents based on a 40-hour work week.

2 Located in public and nonpublic institutions of higher education; National Center for Education Statistics, *Academic Library Survey, 2004*.

3 SED Information, Reporting and Technology Services. *Public/Non-public School Library Statistics, Fall 2006* and *State Aid Unit, Fiscal Year 2005-06*.

4 Located in correctional, health, mental hygiene, and training facilities operated by the State of New York; New York State Library, Division of Library Development, Institution Library Resources, through November 30, 1997.

5 Located in the Cultural Education Center, Empire State Plaza, Albany, New York; New York State Library, *2006-07 ARL Questionnaire* and other sources.

SOURCE: New York State Education Department, Office of Cultural Education, New York State Library.

TABLE J-39
Public and Association Libraries
New York State — 2000-06

	2000	2001(a)	2002	2003	2004	2005	2006
Library Systems	23	23	23	23	23	23	23
Member Libraries in Systems	744	744	745	747	753	754	754
Nonmember Libraries	1	1	1	1	1	1	1
Branches and Other Outlets	559	557	564	552	556	563	562
Bookmobiles	15	15	17	15	13	11	12
Acquisitions and Holdings							
Books Added	5,421,653	5,677,086	4,918,387	4,638,706	5,027,490	4,662,347	4,755,579
Total Books	72,626,522	73,910,858	74,442,304	72,533,515	69,964,648	70,372,711	70,892,144
Total Audio-Visual	6,479,768	6,668,993	7,234,130	7,154,924	7,409,639	7,742,922	8,141,301
Total Holdings	126,363,424	127,178,297	123,818,607	121,197,112	119,905,809	119,892,543	120,874,153
Total Circulation	122,553,743	127,338,048	131,898,253	130,556,001	136,862,276	142,175,265	144,147,902
Staff							
Professional	4,223	4,359	4,306	4,192	4,150	4,217	4,210
Nonprofessional	6,625	7,841	8,709	8,643	8,885	9,137	9,022
Operating Fund							
Receipts							
Local Public Funds	\$ 639,320,416	\$ 705,688,417	\$ 693,138,797	\$ 701,860,408	\$ 779,623,304	\$ 863,857,346	\$ 852,441,056
Local Public Funds Per Capita	\$ 35.54	\$ 39.23	\$ 36.53	\$ 36.99	\$ 41.08	\$ 45.52	\$ 44.92
State Aid	\$ 82,306,824	\$ 82,156,702	\$ 83,696,825	\$ 80,283,027	\$ 67,967,660	\$ 86,618,364	\$ 91,541,592
Federal Aid	\$ 8,052,013	\$ 4,976,250	\$ 7,010,567	\$ 5,999,873	\$ 5,045,659	\$ 6,969,390	\$ 7,974,374
Other Receipts	\$ 260,798,960	\$ 162,870,451	\$ 163,139,497	\$ 181,658,642	\$ 176,642,195	\$ 189,812,486	\$ 192,807,606
Disbursements							
Salaries Plus Employee Benefits	\$ 524,096,980	\$ 569,811,367	\$ 531,079,951	\$ 613,886,090	\$ 648,685,985	\$ 692,694,838	\$ 718,666,052
Library Materials	\$ 111,601,537	\$ 117,844,367	\$ 102,109,896	\$ 107,736,360	\$ 103,471,252	\$ 104,674,825	\$ 108,790,526
Library Materials per Capita	\$ 6.20	\$ 6.21	\$ 5.38	\$ 5.68	\$ 5.40	\$ 5.52	\$ 5.73
Other	\$ 158,871,269	\$ 185,984,914	\$ 184,387,019	\$ 199,744,679	\$ 212,318,291	\$ 225,463,343	\$ 238,573,396
Capital Fund							
Receipts							
State Aid	\$ 763,132	\$ 1,345,828	\$ 1,590,901	\$ 1,037,906	\$ 2,445,630	\$ 1,157,689	\$ 5,735,186
Federal Aid	\$ 230,034	\$ 402,574	\$ 167,086	\$ 2,039,5	\$ 494,814	\$ 100,000	\$ 504,645
Disbursements	\$ 70,676,160	\$ 81,869,653	\$ 80,604,576	\$ 45,642,895	\$ 56,692,085	\$ 1,325,956,982	\$ 64,727,545

a Beginning in 2001, per capita based on 2000 census.

SOURCE: New York State Education Department, New York State Library.

TABLE J-40
New York State Archives
Accessions, Holdings, and Research Inquiries
1978-2007

	Accessions (cubic feet)	Holdings (cubic feet)	Research Inquiries
1978	15,000	15,000	X
1979	3,500	18,500	1,145
1980	4,000	22,500	2,935
1981	4,000	26,500	4,625
1982	8,500	35,000	4,795
1983	2,500	37,500	5,705
1984	4,500	42,000	7,118
1985	1,570	43,570	10,063
1986	2,100	45,670	11,023
1987	2,360	48,030	11,555
1988	3,618	41,140	13,106
1989	3,564	45,064	12,595
1990	3,700	48,764	13,500
1991	2,800	50,964	18,500
1992	2,000	52,964	21,000
1993	1,260	54,224	28,000
1994	1,852	56,076	31,047
1995	1,314	57,390	34,512
1996	2,840	85,612	51,939
1997	2,815	62,181	57,321
1998	2,654	64,835	58,835
1999	6,175	71,010	64,869
2000	1,198	71,335	54,456
2001	1,804	82,310	48,668
2002	2,100	85,612	49,733
2003	1,202	86,814	47,500
2004	807	87,621	NA
2005	824	88,445	43,370
2006	1,564	90,009	45,543
2007	2,815	92,824	42,582

X Not applicable.
NA Not available.

SOURCE: New York State Education Department, Office of Cultural Education, State Archives.

TABLE J-41

**Active Museums, Historical Societies,
and Other Cultural Organizations
New York State by County — 2007**

County	Agencies	County	Agencies	County	Agencies
New York State	2,272	Greene	13	Schoharie	16
New York City	430	Hamilton	6	Schuyler	8
Bronx	26	Herkimer	23	Seneca	14
Kings	62	Jefferson	33	Steuben	26
New York	275	Lewis	9	Suffolk	158
Queens	43	Livingston	18	Sullivan	17
Richmond	24	Madison	23	Tioga	9
Rest of State	1,842	Monroe	60	Tompkins	23
Albany	79	Montgomery	28	Ulster	52
Allegany	20	Nassau	108	Warren	26
Broome	25	Niagara	28	Washington	15
Cattaraugus	22	Oneida	49	Wayne	22
Cayuga	19	Onondaga	46	Westchester	132
Chautauqua	30	Ontario	28	Wyoming	15
Chemung	17	Orange	63	Yates	3
Chenango	17	Orleans	10	Unknown	14
Clinton	17	Oswego	15	Out of State	23
Columbia	28	Otsego	38		
Cortland	18	Putnam	19		
Delaware	24	Rensselaer	28		
Dutchess	64	Rockland	31		
Erie	75	St. Lawrence	35		
Essex	23	Saratoga	39		
Franklin	17	Schenectady	16		
Fulton	15				
Genesee	16				

Type of Agency

All Agencies	Museum	Historical Society	Other ¹
2,274	608	867	799

Type of Agency Charter

All Charters	Provisional	Absolute	Affiliates	Incorporated		Legislated	Unknown
				by Secretary of State	by Certificate		
2,274	778	617	131	161	171	22	394

1 Includes arboretums, aquariums, botanic gardens, herbariums, zoos, etc.

SOURCE: New York State Education Department, State Museum, Chartering Program.

TABLE J-42

**State and Federal Support for the Arts by Type of Program and Funding Source
New York State — Fiscal Years 2002-03 — 2007-08**

Type of Program	2002-03(r)	2003-04	2004-05	2005-06	2006-07	2007-08
State Aid to Localities for the Arts	\$ 44,000,000	\$ 37,400,000	\$ 37,400,000	\$ 37,400,000	\$ 42,500,000	\$ 49,000,000
Architecture, Planning and Design ¹	1,500,000	1,354,750	1,315,250	1,378,950	1,541,873	1,850,000
Arts-in-Education ²	4,895,000	4,173,000	4,185,853	4,185,500	4,461,300	4,777,400
Capital Funding Initiative ³	1,185,000	735,750	829,647	888,550	851,627	1,100,000
Dance ⁴	2,759,900	2,378,250	2,297,500	2,351,100	2,507,300	3,070,000
Decentralization ⁵	3,020,850	2,586,550	2,571,150	2,576,000	—	—
Electronic Media and Film ⁶	2,482,000	2,044,700	2,036,750	2,043,000	2,185,700	2,755,000
Folk Arts ⁷	1,530,950	1,329,850	1,327,795	1,321,000	1,350,000	1,600,000
Individual Artists ⁸	2,238,600	1,930,550	1,978,986	1,959,000	2,097,000	2,480,000
Literature ⁹	1,140,000	991,100	1,010,710	1,019,000	1,089,200	1,420,000
Museum ¹⁰	4,940,950	4,222,625	4,244,120	4,202,000	4,454,800	5,400,000
Music ¹¹	4,028,000	3,436,450	3,430,811	3,386,600	3,642,400	4,438,990
Presenting Organizations ¹²	2,409,000	2,106,250	2,087,000	2,078,000	2,316,958	2,799,850
Special Arts Services ¹³	3,544,770	2,947,060	2,904,250	2,908,500	3,081,100	3,699,960
State and Local Partnerships ¹⁴	3,516,980	2,961,815	2,946,478	2,888,500	5,803,900	7,015,000
Theatre ¹⁵	3,409,000	2,965,400	2,986,600	2,969,800	3,706,600	3,920,800
Visual Artists ¹⁶	1,399,000	1,235,900	1,247,100	1,244,500	1,338,600	1,523,000
Technology Initiative	—	—	—	—	—	—
Digitization	—	—	—	—	2,060,000	—
Stabilization	—	—	—	—	—	1,150,000
Funds Unspent	—	—	—	—	11,642	—
National Endowment for the Arts Awards						
Administration	626,100	605,100	593,500	576,800	490,800	—
Aid to Localities	151,100	160,500	224,300	194,300	315,100	780,200
Funding Source						
New York State Government						
State Purposes Appropriations	\$ 5,296,000	\$ 5,100,000	\$ 4,921,000	\$ 5,300,000	\$ 5,656,000	\$ 6,066,000
Local Assistance Appropriations	44,000,000	37,400,000	37,400,000	37,400,000	42,500,000	49,000,000
Federal Government						
National Endowment for the Arts	\$ 777,200	\$ 765,600	\$ 817,800	\$ 771,100	\$ 805,900	\$ 780,200

r Revised.

— Represents zero.

1 Awards project grants and institutional support in the fields of architecture (both contemporary and restoration), landscape architecture, urban and rural planning, urban design, historic preservation, graphic and industrial design, and architectural theory and history.

2 Provides support for in-depth collaborations between arts organizations and schools that benefit children from pre-kindergarten through twelfth grade.

3 Capital Projects supports the improvement, expansion, or rehabilitation of existing buildings owned or leased by nonprofit cultural institutions receiving programmatic funding from the Council on the Arts.

4 Includes funding for performances, services to the field, and general operating support, and such incentive category projects as commissions, building repertory, choreographic workshops, long-term residencies in New York State, and low-cost rehearsal spaces.

5 Includes awards to local regrant agencies to respond to pool of applicants for grants of \$5,000 or less. The Decentralization Program was initiated in 1976/77 to support local participation in community arts grants making. Starting in Fiscal Year 2006-07, Decentralization is included as part of State and Local Partnerships

6 Includes awards for exhibition, distribution, and preservation of film and magnetic media. Also includes support for special projects and programs. Prior to 1990-91, there were separate categories for film and media.

7 Includes support for presentation of traditional folk arts, funding for regional and county folklorists, apprenticeships, general operating support, and general program support, publications, exhibitions, and special projects.

8 Includes the NYS Artists Fellowship Program and the Special Opportunity Stipends Program administered by the New York Foundation for the Arts, a nonprofit organization.

9 Funding is directed toward public programming, literary publishing, translation of literature, operating support for regional literary centers,

and special projects. Also supports development projects, technical assistance, a Latino Writers Initiative, and a book distribution project to public, institutional, and nontraditional libraries.

10 Includes general operating support as well as project support for exhibitions, exhibition planning, museum education and interpretation, collections management, cataloguing and research, and services to the field. Support is also provided for a regrant program providing technical assistance support for the professional development of museums and historic sites.

11 Includes orchestras, opera companies, jazz, chamber music, early and contemporary music, publications, recordings, services to the field, tours, musical instrument revolving loan fund, radio production and broadcast, and new music technology.

12 Includes support for presentations of live performances including but not limited to dance, music, and theatre.

13 Includes support for producing and presenting multi-arts activities within the Asian, Black, Hispanic, Native American, and ethnic communities of the State, as well as support for instruction and training in the arts.

14 Includes awards to local arts councils, community-based multi-arts centers, and multidisciplinary arts service organizations. Starting in Fiscal Year 2006-07, Decentralization is included as part of State and Local Partnerships

15 Includes children's theatre, street theatre, mime, experimental, off-Broadway, off-off-Broadway, as well as productions of large institutional organizations, resident professionals, and semi-professionals, technical assistance, special projects, support for services organizations, and projects of not-for-profit publishers.

16 Includes exhibitions for living artists, workspace opportunities, aspects of critical writing connected to funded exhibitions, fees, and materials for artists.

SOURCE: New York State Council on the Arts.

TABLE J-43

**State Aid to Localities for Support of the Arts
New York State by County — Fiscal Years 2002-03 — 2007-08**

County	2002-03	2003-04	2004-05	2005-06	2006-07	2007-08
New York State ¹	\$ 44,000,000	\$ 37,400,000	\$ 37,400,000	\$ 37,400,000	\$ 42,500,000	\$ 49,000,000
New York City	26,607,515	22,521,024	22,151,357	22,365,629	25,798,615	29,439,819
Bronx	908,450	760,855	780,150	778,050	765,770	995,950
Kings	2,448,520	2,169,343	1,988,022	2,267,700	2,430,195	2,848,722
New York	21,476,420	18,021,682	17,778,785	17,772,964	20,962,000	23,679,657
Queens	1,453,475	1,293,369	1,359,100	1,298,315	1,403,175	1,605,190
Richmond	320,650	275,775	245,300	248,600	237,475	310,300
Rest of State	17,392,485	14,878,976	15,248,643	15,034,371	16,689,743	19,560,181
Albany	833,693	742,600	579,000	592,300	756,275	918,077
Allegany	34,900	21,000	21,600	21,600	25,000	20,000
Broome	192,950	160,096	152,300	160,497	167,425	227,300
Cattaraugus	144,150	110,500	95,400	79,000	99,135	112,100
Cayuga	71,200	79,546	55,200	62,900	96,685	118,800
Chautauqua	217,575	183,085	177,200	225,400	204,645	252,850
Chemung	92,800	49,725	44,800	54,800	77,430	67,200
Chenango	130,434	138,550	158,900	129,900	145,645	180,495
Clinton	80,400	78,233	91,800	119,324	98,650	158,000
Columbia	326,575	294,860	261,400	227,000	254,015	449,600
Cortland	28,000	24,500	22,500	32,000	31,725	44,300
Delaware	319,704	194,370	190,578	215,078	209,322	290,589
Dutchess	652,617	503,341	528,800	599,850	621,980	668,210
Erie	1,672,400	1,508,259	1,575,647	1,514,300	1,716,760	2,002,600
Essex	275,600	228,680	267,000	238,100	267,230	320,300
Franklin	67,835	53,285	96,645	49,800	58,025	59,200
Fulton	25,000	25,000	25,900	22,900	24,600	26,800
Genesee	176,100	104,310	117,600	172,550	104,675	162,300
Greene	119,200	130,750	154,300	171,100	226,095	233,175
Hamilton	127,700	88,400	81,200	81,100	126,560	113,300
Herkimer	90,140	55,660	53,700	69,600	49,455	48,800
Jefferson	139,200	68,500	107,973	92,953	77,730	72,100
Lewis	15,500	13,030	18,000	15,000	15,500	19,000
Livingston	135,900	121,117	115,200	115,500	117,475	153,800
Madison	243,800	193,400	155,700	59,900	55,695	85,800
Monroe	1,698,562	1,415,263	1,351,400	1,257,550	1,463,142	1,594,640
Montgomery	68,390	35,092	64,000	46,400	113,500	95,100
Nassau	539,450	535,900	537,850	532,900	633,239	587,550
Niagara	291,050	213,000	187,200	225,497	256,040	266,600
Oneida	344,500	294,900	280,500	295,800	406,250	404,400
Onondaga	940,935	1,108,540	1,143,900	1,137,554	1,292,325	1,475,542
Ontario	189,532	208,035	215,700	205,000	174,230	194,540
Orange	156,700	145,700	148,200	155,700	228,300	207,700
Orleans	30,000	27,100	18,000	18,500	30,000	30,000
Oswego	105,775	86,635	86,700	80,200	67,295	24,400
Otsego	382,242	381,300	432,200	429,800	393,370	472,900
Putnam	179,600	185,200	195,800	172,200	121,535	212,000
Rensselaer	497,260	349,600	458,100	434,800	326,465	477,650
Rockland	278,650	219,200	243,400	194,100	219,985	292,175
St. Lawrence	131,890	108,898	114,100	115,600	140,830	219,700
Saratoga	372,820	314,750	330,800	332,250	363,090	397,875
Schenectady	361,008	280,020	325,550	292,450	274,905	322,800
Schoharie	155,000	144,550	121,900	98,300	106,750	109,300
Schuyler	15,000	8,000	8,000	10,000	12,000	16,000
Seneca	15,000	15,000	15,000	15,000	15,000	15,000
Steuben	334,450	281,350	260,600	252,600	253,935	400,300
Suffolk	1,026,675	785,532	909,100	860,050	919,775	1,058,910
Sullivan	148,100	116,795	112,300	130,900	136,795	188,755
Tioga	291,304	241,727	250,200	254,600	334,125	342,100
Tompkins	429,850	292,200	374,300	309,800	381,390	439,648
Ulster	435,668	392,845	372,000	387,800	392,860	672,200
Warren	284,700	282,917	304,400	291,400	417,985	408,000
Washington	136,682	113,500	123,700	93,400	86,230	149,800
Wayne	41,500	37,325	38,000	39,000	38,000	28,000
Westchester	1,185,619	917,475	1,001,700	982,368	1,192,030	1,340,400
Wyoming	80,700	65,730	64,000	65,200	73,350	93,500
Yates	30,500	17,000	11,700	30,200	22,285	23,000
Statewide (not allocatable by county)	—	87,100	—	165,000	175,000	195,000

r Revised.

— Represents zero-based county funding and not receiving county funding.

1 Includes State appropriations only, awarded as grants administered by the New York State Council on the Arts. Includes Statewide grants not allocatable by county.

SOURCE: New York State Council on the Arts.

TABLE J-44
Public Television Stations
New York State — Fiscal Years 2007-08

Location	Call Letters	U.S. ¹ Market Rank	State Operational Aid
All Stations		X	\$ 17,498,801.70
Educational Broadcasting Corporation ²		1	8,749,400.85
Buffalo	WNED-TV	50	1,718,620.70
Rochester	WXXI-TV	78	1,514,722.69
Syracuse	WCNY-TV	80	1,338,199.22
Capital District	WMHT-TV	56	1,470,335.36
Binghamton	WSKG-TV	156	987,078.05
Watertown	WPBS-TV	177	884,000.70
Plattsburgh	WCFE-TV	92	836,444.14

X Not applicable.

¹ The source for the U.S. Market Rank is the Television Bureau of Advertising: www.tvb.org/central/markettrack/US_HH_by_DMA.asp.

² The Educational Broadcasting Corporation includes two stations, WNET and WLIW, serving the New York City Metropolitan Area.

SOURCE: New York Education Department, Office of Cultural Education, Office of Education Television and Public Broadcasting.

TABLE J-45
Public Radio Broadcasting
New York State — Fiscal Years 2006-07 and 2007-08

Location	Call Letters	State Operational Aid	
		2006-07	2007-08
All Stations		\$ 1,189,807	\$ 1,331,198
Albany	WAMC-FM	69,989	78,306
Binghamton	WSKG-FM WSQX-FM	69,989 69,989	78,306 78,306
Bronx	WFUV-FM	69,989	78,306
Buffalo	WBFO-FM WNED-AM WNED-FM	69,989 69,989 69,989	78,306 78,306 78,306
Canton	WSLU-FM	69,989	78,306
New York City	WNYC-AM WNYC-FM	69,989 69,989	78,306 78,306
Oswego	WRVO-FM	69,989	78,306
Rochester	WXXI-AM WXXI-FM	69,989 69,989	78,306 78,306
Schenectady	WMHT-FM	69,989	78,306
Southampton	WLIU-FM	69,989	78,306
Syracuse	WAER-FM WCNY-FM	69,989 69,989	78,306 78,306

SOURCE: New York State Education Department, Office of Cultural Education, Office of Educational Television and Public Broadcasting.

